

PREMIUM LIST

Department Q – Tractor Pulling Contest

JACK RATCLIFFE, BOB SCHERER and DAVID YAKEY – Superintendents
 Kerry Lee, Track Superintendent

Thursday, August 12th, 10:00 a.m.

Each Exhibitor will receive one free pass

Entry Fee: \$21.00

Premiums Offered \$5,120.00

Big "A" Water wagon furnished by Conserve FS

**TRACTOR PULLING
 CONTEST STANDARDIZED RULES**

1. All tractors pulling Thursday must be farm tractors.
2. All entries must be made on official entry blank for Fair holding contest; entry blanks must be completed in full.
3. The Association reserves the right to reject any entry. Judges decisions are final.
4. Tractor weight INCLUDES WEIGHT OF DRIVER.
5. Winners may be required to weigh back at the request of the judges.
6. The Association reserves the right to alter or change rules on the day of the contest if ground conditions or weather require. No rules will be changed after the contest has started.
7. All draw bars must be no more than 20" high. They will extend no less than 16" or more than 20" behind rear axle.
8. No weights or frame may extend more than 24" in front of the tractor. Front of tractor includes tires.
9. All pulls will start from tight chain (or cable).

10. Operator will be disqualified for slipping clutch after it has been engaged, changing gears, standing up, or careless operation.
11. All drivers must be 16 years of age and both genders are welcomed to pull in all classes.
12. These rules for 2009 are designed to keep tractor pulling a sport that the maximum number of people can enjoy and to hopefully keep it from becoming a sport of the experts and the elite. If your tractor is over the factory RPM, it is strongly recommended that additional safety equipment be installed. For further information send self-addressed envelope to Jack Ratcliffe, 4095 Town Hall Rd., Belvidere, IL 61008.
13. No Sanctioned Tractors Allowed.
14. No "P" pumps allowed in Farm classes of tractors.
15. A Tractor may be pulled only in two classes and only once in a class.

Scale will be open between 7:00 a.m. and 9:00 a.m. with a drivers meeting at 9:45 a.m. Thursday. Numbers will be pulled for pulling positions until 9:00 a.m. After that time the contestant will pull last.

Trophy awarded in each class.

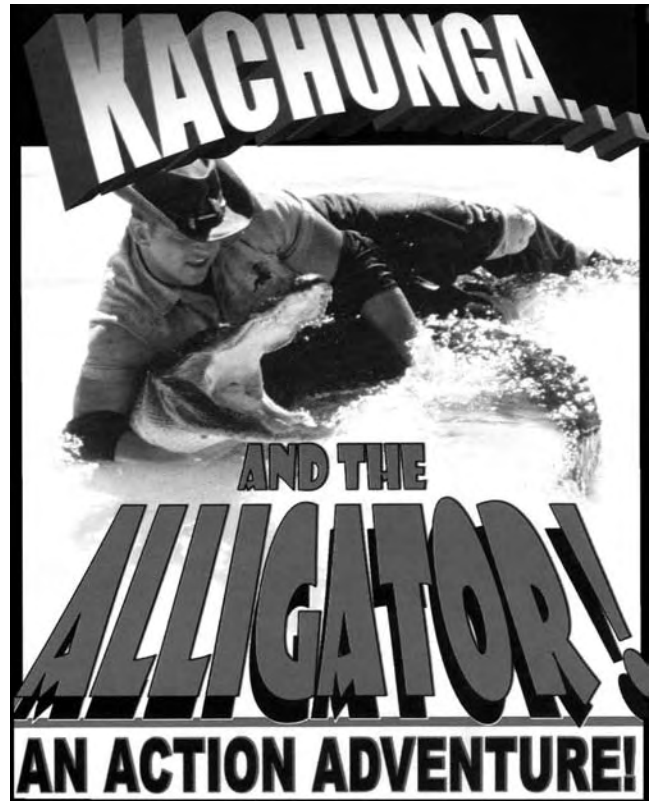
Requirements for Class A-H tractors
 pulling on Thursday morning 10:00 a.m.:

Pulling numbers will be drawn at registration

No Cut Tires – No Dual Wheels

No 4-Wheel Drives or MFWD Tractors

| Premium Number | 1st | 2nd | 3rd | 4th | 5th | 6th | 7th |
|--|-------|-------|------|------|------|------|------|
| Class A, B, and C 2,500 RPM | | | | | | | |
| Class D, E, F, and H 3,000 RPM | | | | | | | |
| 3700. Class A – 5,000 lbs. no blower | \$170 | \$120 | \$90 | \$80 | \$70 | \$60 | \$50 |
| 3701. Class B – 6,000 lbs. no blower | \$170 | \$120 | \$90 | \$80 | \$70 | \$60 | \$50 |
| 3702. Class C – 7,000 lbs..... | \$170 | \$120 | \$90 | \$80 | \$70 | \$60 | \$50 |
| 3703. Class D – 10,000 lbs. no blower | \$170 | \$120 | \$90 | \$80 | \$70 | \$60 | \$50 |
| 3704. Class E – 10,000 lbs. blower | \$170 | \$120 | \$90 | \$80 | \$70 | \$60 | \$50 |
| 3705. Class F – 12,000 lbs. no blower | \$170 | \$120 | \$90 | \$80 | \$70 | \$60 | \$50 |
| 3706. Class G – 12,000 lbs. blower | \$170 | \$120 | \$90 | \$80 | \$70 | \$60 | \$50 |
| 3709. Class H – 14,000 lbs. blower | \$170 | \$120 | \$90 | \$80 | \$70 | \$60 | \$50 |



Every Day on the Grounds – South Road

sponsored by Blackhawk Bank,

Doc's Upholstery, and Temple's 5 Star Mufflers

PREMIUM LIST

Department Q – Illini State Pullers

JACK RATCLIFFE – Superintendent

Thursday Night, August 12th – Pull to begin at 6:30 p.m.

Entry Fee: \$21.00

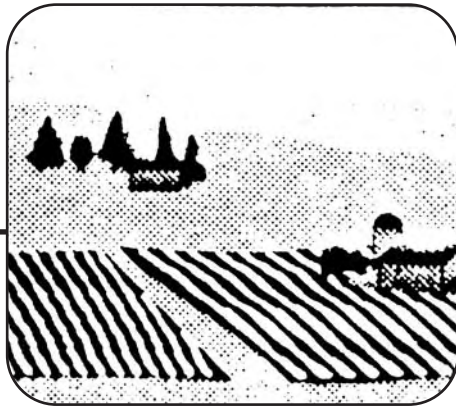
Premiums Offered – \$16,100.00

One Pit Pass

Trophy awarded in each class.

| Premium Number | | 1st | 2nd | 3rd | 4th | 5th | 6th | 7th | 8th | 9th | 10th | 11th | 12th | 13th | 14th |
|----------------|---------------------------------------|-------|-------|-------|-------|-------|-------|-------|-------|-------|-------|------|------|------|------|
| 3720. | 5,000 lbs. NA | \$275 | \$240 | \$210 | \$175 | \$145 | \$110 | \$85 | \$60 | | | | | | |
| 3721. | 7,000 lbs. NA | \$275 | \$240 | \$210 | \$175 | \$145 | \$110 | \$85 | \$60 | | | | | | |
| 3722. | 6,500 lbs. Ltd-Pro | \$425 | \$325 | \$225 | \$200 | \$170 | \$150 | \$140 | \$130 | \$125 | \$110 | | | | |
| 3723. | 9,300 lbs. Super Farm | \$440 | \$390 | \$315 | \$265 | \$210 | \$160 | \$115 | \$105 | | | | | | |
| 3724. | 10,000 lbs. Pro-Farm | \$300 | \$275 | \$235 | \$200 | \$175 | \$130 | \$100 | \$80 | \$55 | \$50 | | | | |
| 3725. | 6,000 lbs. Super Stock | \$425 | \$325 | \$225 | \$200 | \$170 | \$150 | \$140 | \$130 | \$125 | \$110 | | | | |
| 3726. | 6,500 lbs. Mod Tractors | \$400 | \$305 | \$230 | \$190 | \$155 | \$140 | \$100 | \$80 | | | | | | |
| 3727. | 6,500 lbs. Stock Altered Trucks | \$275 | \$240 | \$210 | \$175 | \$145 | \$110 | \$85 | \$60 | | | | | | |
| 3728. | 6,200 lbs. Super Stock Trucks | \$340 | \$295 | \$275 | \$225 | \$200 | \$150 | \$120 | \$90 | \$55 | \$50 | \$50 | \$50 | \$50 | \$50 |
| 3729. | 20,000 lbs. Stock Semi. | \$210 | \$185 | \$160 | \$135 | \$110 | \$85 | \$65 | \$50 | | | | | | |

**All participants must show certification of tractor weight prior to pull.
Illini State Pullers Association 2010 rules will be used.**



**Selective
Superior
Seed**

**Hughes
Garst
Midwest**

Jack Ratcliffe

4095 Townhall Rd. • Belvidere, IL 61008
Mobile: (815) 262-4242 • Home: (815) 547-6173

PREMIUM LIST

**Department Q – Pro Stock/Altered Farm Stock Tractor Pulling Contest,
Tri-County Pullers, Inc.**

JACK RATCLIFFE and BOB SCHERER – Superintendents
KERRY LEE, Track Superintendent

Thursday, August 12th at 3:00 p.m.
Each Exhibitor will receive one free pass

Entry Fee: \$31.00 for Classes #3733 & #3735 Entry Fee: \$21.00 for Classes #3737, #3738 and #3739

Premiums Offered – \$5,476.00

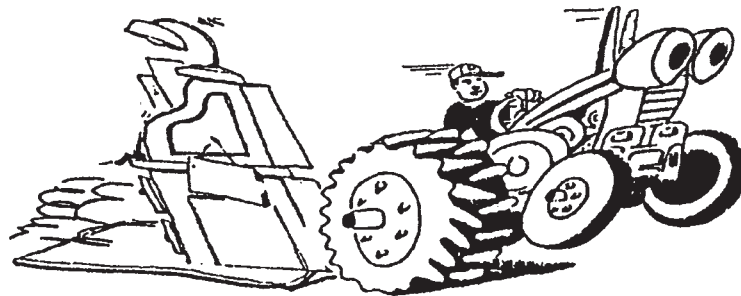
| Premium Number | 1st | 2nd | 3rd | 4th | 5th | 6th | 7th | 8th | 9th | 10th | 11th | 12th |
|--|-------|-------|-------|-------|-------|-------|------|------|------|------|------|------|
| 3733. LTD Pro-Stock 6,500 lbs. (Must Meet ISP Rules) | \$337 | \$262 | \$225 | \$187 | \$150 | \$112 | \$75 | | | | | |
| 3735. Super Farm 9,300 lbs. | \$337 | \$262 | \$225 | \$187 | \$150 | \$112 | \$75 | | | | | |
| 3737. Class J – Altered Farm Stock 6,000 lbs. | \$170 | \$120 | \$90 | \$80 | \$70 | \$60 | \$50 | | | | | |
| 3738. Class K – Altered Farm Stock 12,000 lbs. | \$170 | \$120 | \$90 | \$80 | \$70 | \$60 | \$50 | | | | | |
| 3739. 1900 lbs. Open Mini-Rods. | \$325 | \$300 | \$250 | \$175 | \$120 | \$95 | \$70 | \$50 | \$40 | \$30 | \$24 | \$21 |

Requirements for Class F-K (Pro Stock/Altered Farm Stock) Tractors pulling on Thursday are:

- Stock tractors having alterations to increase power.
- Safety equipment mandatory.
- Certified weight accepted for Pro Stock Tractors only.
- Pro Stock Tractors cannot pull in Altered Farm Stock Tractor classes.
- Altered Farm Stock Tractors are allowed to have "P" Pumps.
- Altered Farm Stock Tractors may be sanctioned.
- Altered Farm Stock Tractors must be weighed in on scale at fairgrounds by 12:00 noon the day of pull.

A tractor may be pulled only in two classes and only once in a class.
All Tractor Pulling Contest Standardized Rules apply to the Altered Farm Stock Tractors.
Fly wheel must be steel.
Illini State Altered Farm Stock Tractor Rules apply also.
Membership in Tri-County Pullers, Inc. required to pull in 1900 lbs. Open Mini-Rods class, #3739, and membership can be obtained by calling 815-708-3788.
Further information obtained by calling Jack Ratcliffe: (815) 547-6173.
Trophy awarded in each class.

Weak End Antique Tractor Pullers



**Weak End Antique Tractor Pullers Club
2010 Rules**

PRIZES: 3 Trophies in each class with the exception of open gear class. (see back of rules sheet).

The age limit of tractors is Pre-1954 (December 31, 1953 or older).

Weight classes shall be as follows:

- 3,500 lbs. or less, 3,750 lbs. or less, 4,100 lbs. or less,
- 4,600 lbs. or less, 5,100 lbs. or less, 5,600 lbs. or less,
- 6,100 lbs. or less, 6,600 lbs. or less, 7,100 lbs. or less, and 7,600 lbs.

Each tractor will be allowed two hooks

PREMIUM LIST

Department Q – Street Stock and Super Stock 4-Wheel Drive Trucks

JACK RATCLIFFE – Superintendent

All trucks must weigh in from 10:00 to 11:45 on the fairgrounds scale the day of the pull.

Truck Pull: 2:00 p.m. Thursday, August 12th

Entry Fee: Stock Classes – \$21.00, and Super Stock Class #3802 - \$31.00

Pull number for pull placement

Street Stock – Must have Valid License Registration and Plates and Insurance Card

Checks Must be Picked up Sunday Night or 2 Hours After Pull is Completed

Premiums Offered – \$1,124.00

GENERAL RULES

All classes will be required to adhere to the following:

1. High point of hitch cannot exceed 26 inches – not more than 2 inches in front of tailgate.
2. No dual wheels or chains.
3. If original vehicle has doors, they must be on and closed.
4. Seat belts required and must be worn.
5. Fire extinguishers are required.
6. All weights must be safely secured and may not extend forward more than 60 inches.
7. Any weight that hits track while hooked to the sled will be cause for disqualification.
8. All drivers must be 16 years of age or older and have a valid drivers license.
9. Any truck that leaves boundary of the course will be disqualified.
10. All classes will be required to use only automotive-type front and rear axle housings.
11. Single engines only.
12. Drawbar must be equipped with steel hitching device no more than 1 inch thick and must have a 3-inch opening capable of accepting a 3-inch diameter pipe.
13. 3-inch hole in hitch must be parallel with ground.
14. Pulling point can be no more than 1-1/2 inches from back edge of hitching device.
15. No devices used to raise hitch height while pulling. This will be cause for disqualification.
16. 75' restart will be used.

Alterations subject to change without notice by Judges

JUDGES' DECISIONS FINAL!!!

Super Stock Class:

1. Any single 4-barrel carburetor with any intake manifold.

2. Headers or open exhaust will be allowed, but must exit up or back.

3. All components must be in original position on stock 4x4 frame, except any 4x4 pickup transfer case may be used and repositioned.
4. Transmission must be automotive type, available in 4x4 pickup.
5. Working kill switches required for all pickups—Exception: stock truck.
6. No blower or turbo.

RULES OF STOCK DIESEL TRUCK PULLS

Any truck driven, towed or hauled to the Fair grounds shall be able to compete in street stock diesel. **Body and chassis:** maximum weight 8,000 lbs., maximum wheelbase: OEM Only, Drive train: OEM, vehicle shall have complete OEM body after market body allowed and body panels, vehicle shall have front and rear bumpers. Front bumper shall be in stock location, no front weight brackets allowed. All weights in bed must be secured in the bed. Bolt on suspension components are allowed except air bags, no traction bars allowed. Tires shall be DOT approved. No cut or shaved tires allowed. No bar tires. Hitch height maximum of 26 inches. Hitch shall be rear bumper or receiver type hitch bolted solid within the last 12 inches of OEM frame. Any after market cushion hitch allowed. No part of the vehicle or hitch shall interfere with the sled chain or hook. **Engines:** Engine shall be OEM stock, maximum one turbo no after market turbo allowed. No after market fuel pumps, oil pumps, turbocharger, and/or injectors, exhaust must be street legal, no water injection allowed. Diesel fuel only. No propane, alcohol, nitro methane, propylene, benzene, and nitrous oxide and/or other oxygen adding agents.

WEIGHT CLASSES

| Premium Number | | 1st | 2nd | 3rd | 4th |
|----------------|---|-------|-------|------|------|
| 3800. | 4,000 lbs. – Street Stock | \$100 | \$75 | \$50 | \$25 |
| 3801. | 6,800 lbs. – Street Stock | \$100 | \$75 | \$50 | \$25 |
| 3802. | 6,200 lbs. – Super Stock | \$150 | \$112 | \$75 | \$37 |
| 3804. | 8,000 lbs. – Stock Diesel Truck | \$100 | \$75 | \$50 | \$25 |

Trophy awarded in each class.

PREMIUM LIST

**2010 Boone County Fair
ROCK COUNTY PULLERS INC.**



Saturday, August 15th at 7:30 a.m.

Hook Fees - \$10.00 per member / \$15.00 for non-member

Prizes - 80% Pay Back

Rock County Puller, Inc. Rules apply

Contact Scott Sandberg (815) 509-5803 for more information

- Kids 10 hp Stock – 900 lbs.
- 12 hp Stock – 1,050 lbs.
- 18 hp Stock – 1,050 lbs.
- 25 hp Stock – 1,200 lbs.

- 30 Cube – 975 lbs.
- 18 hp Mod Stock – 1,050 lbs.
- 18 hp Pro Stock – 1,050 lbs.
- 18 hp Open Super Stock – 1,050 lbs.

- 10 hp Altered Stock – 1,050 lbs.
- 12 hp Altered Stock – 1,050 lbs.
- 18 hp Altered Stock – 1,050 lbs.

Turbo Diesel Class – 1,200 lbs.

Department Q – Garden Tractor Pulling Contest

RON FRUIT, WAYNE FRUIT – Superintendents

Saturday, August 14th at 9:00 a.m.

Trophy will be awarded to Winner in each class

Amateur entries taken at 8:30 a.m.

Premiums Offered – \$450.00

STANDARDIZED RULES

1. All entries will be taken at 8:30 a.m.
2. All entries must be made on official entry blanks of Boone County Fair.
3. The superintendents reserve the right to reject any entry.
4. Judges decisions are final.
5. Tractor includes the weight of driver & will be weighed on the day of pull.
6. Pulling number will be drawn at the time of entry
7. All minors must have WRITTEN CONSENT OF PARENT OR GUARDIAN.
8. A tractor may only enter once in a class
9. All pulls will start from a tight chain.
10. The next tractor will be in the staging area while the one before it pulls.
11. No mower decks or attachments on tractor.
12. Junior Amateur Class is 7-13 yrs. old.
13. Senior Amateur Class is 14 yrs. & older.
14. No chains or Duals.
15. No Cut tires in Amateur Class.
16. Draw bar height is 12" max.

17. All weights must be securely attached to tractor and None on the seat.
18. Each contestant must furnish their own clevis.
19. All tractors will be showroom stock.
20. Tractor must be operated in a safe manner at all times, with one hand on the steering wheel at all times.
21. All engines will run at stock RPM in Amateur Class.
22. **The Boone County Fair Association will not be responsible for any accidents or injuries that may occur at this event.**

Entry Fee \$6.00 for each class entered

3825. Junior Amateur – 1,000 lbs. and not more than 14 H.P.

23 x 10.5 x 12 Lawn turf tires.

| 1st | 2nd | 3rd | 4th | 5th | 6th | 7th | 8th |
|------|------|------|------|------|------|------|------|
| \$50 | \$40 | \$35 | \$30 | \$25 | \$20 | \$15 | \$10 |

3826. Senior Amateur – 1,100 lbs. and not more than 16 H.P.

23 x 10.5 x 12 Lawn turf tires.

| 1st | 2nd | 3rd | 4th | 5th | 6th | 7th | 8th |
|------|------|------|------|------|------|------|------|
| \$50 | \$40 | \$35 | \$30 | \$25 | \$20 | \$15 | \$10 |

Pedal Pull Contest

August 15th, 10:00 a.m. Beef Livestock Show Arena

Entries will be taken beginning at 9:00 a.m. in front of the building. Only **IN PERSON**.

CONTEST RULES:

1. Kids **MUST** stay off tractors except when pulling or will be disqualified.
2. Pull can be resumed if foot slips off pedal.
3. No standing up to pedal tractor.
4. No hooking feet under pedals.
5. No backing up and jerking skid chain at all.
6. If tractor leaves track boundary the pull ends.
7. The stop of forward motion ends pull.
8. All decisions made by the officials are final.
9. All pulling tractors will be supplied.

| Classes | 1st | 2nd | 3rd | 4th | 5th & On |
|------------------|-----|-----|-----|-----|----------|
| 4 years old | \$5 | \$4 | \$3 | \$2 | \$1 |
| 5 years old | \$5 | \$4 | \$3 | \$2 | \$1 |
| 6 years old | \$5 | \$4 | \$3 | \$2 | \$1 |
| 7 years old | \$5 | \$4 | \$3 | \$2 | \$1 |
| 8 years old | \$5 | \$4 | \$3 | \$2 | \$1 |
| 9 years old | \$5 | \$4 | \$3 | \$2 | \$1 |
| 10 years old | \$5 | \$4 | \$3 | \$2 | \$1 |
| 11 years old | \$5 | \$4 | \$3 | \$2 | \$1 |
| 12 years old | \$5 | \$4 | \$3 | \$2 | \$1 |
| 13 - 18 men | | | | | |
| 13 - 18 women | | | | | |
| 19 & older men | | | | | |
| 19 & older women | | | | | |

Sponsored by Henninger Family

Trophies and ribbons will be supplied.

PREMIUM LIST

Department R – Pony Halter & Draft Harness Classes

Thursday, August 12, 2010, 10:00 a.m. – Friday, August 13, 2010, 11:00 noon – Saturday August 14, 2010, 9:00 a.m.

Teri Keegan, Superintendent 815-597-1760

All Exhibitors Must Purchase Exhibitor's Ticket

Judge: TBA Ringman: Paul Turner Announcer: Will Swierenga Secretary: Nancy Swierenga

Mailed entries must be postmarked before Midnight, Saturday, July 17th

Entries can be made in person and will be taken in the Administration Bldg. on the fairgrounds which will be open on Saturday July 24th, 9:00 a.m. to 5:00 p.m., and Sunday July 25th, 9:00 a.m. to 5:00 p.m. only. (See Rule No. 2)

Entry Fee: \$5.00 Per Class *Stall Rent: \$5.00 per single, \$10.00 per double No entry fee for Showmanship

Administration Fee \$3.00 Per Dept., includes 4-H exhibitors.

Premiums Offered - \$17,960.00

RULES

1. Due to the limited number of stalls, there is a requirement that there be two animals per double animal stall (except for tack stalls). In the event of a shortage of stall space, the superintendents reserve the right to limit the amount of stalls issued to each exhibitor.
2. First and second prize winners will be eligible to show in champion class.
3. Superintendent reserves the right to make scheduling changes.
4. **All Coggins must be turned into the Superintendent or Secretary before the start of show on Thursday. This is the Exhibitors responsibility!!**

PARK OUTSIDE OF GATE!

THURSDAY PONY CLASSES – 10:00 a.m.

| Premium Number | 1st | 2nd | 3rd | 4th | 5th | 6th | 7th | 8th | 9th | 10th |
|---|---------|--------|--------|--------|--------|------|------|------|------|------|
| 5138. Junior Showmanship, Ages 8-10 Years (At Halter) | Trophy | Ribbon | Ribbon | Ribbon | Ribbon | | | | | |
| 5139. Intermediate Showmanship, Ages 11-14 Years (At Halter) . . . | Trophy | Ribbon | Ribbon | Ribbon | Ribbon | | | | | |
| 5140. Senior Showmanship, Ages 15 & Up (At Halter) | Trophy | Ribbon | Ribbon | Ribbon | Ribbon | | | | | |
| 5141. Pet Pony, Child 7 years and under. Mare or Gelding under 60" (Trophy donated by Turner Farms, Jim & Marilyn Turner, Garden Prairie, IL) | \$50 | \$40 | \$30 | \$20 | \$15 | \$14 | \$13 | \$12 | \$11 | \$10 |
| 5142. Pet Pony, Child 8-9 years. Mare or Gelding under 60". (Trophy donated by Rock Hard Haulin', Rock & Teri Keegan, Garden Prairie, IL) | \$50 | \$40 | \$30 | \$20 | \$15 | \$14 | \$13 | \$12 | \$11 | \$10 |
| 5143. Pet Pony, Child 10 years. Mare or gelding under 60". (Trophy donated by Shady Grove Haflingers, Poplar Grove, IL) . | \$50 | \$40 | \$30 | \$20 | \$15 | \$14 | \$13 | \$12 | \$11 | \$10 |
| 5144. Pet Pony, Child 11 years. Mare or gelding under 60". (Trophy donated by Agnes Lee, Clinton, WI) | \$50 | \$40 | \$30 | \$20 | \$15 | \$14 | \$13 | \$12 | \$11 | \$10 |
| 5145. Pet Pony, Child 12 years. Mare or gelding under 60". (Trophy donated by Denny & Janet Ellingson Family Poplar Grove, IL) | \$50 | \$40 | \$30 | \$20 | \$15 | \$14 | \$13 | \$12 | \$11 | \$10 |
| 5146. Miniature stallion, 38" and under". | \$50 | \$40 | \$30 | \$20 | \$15 | | | | | |
| 5147. Grand Champion, Miniature Stallion | Trophy | | | | | | | | | |
| 5148. Reserve Champion, Miniature Stallion | Rosette | | | | | | | | | |
| 5149. Mini Halter, Gelding, Pony 10 Years & Under, 38" and Under. . | \$50 | \$40 | \$30 | \$20 | \$15 | \$14 | \$13 | \$12 | \$11 | \$10 |
| 5150. Mini Halter, Gelding, Pony 11 Years & Over, 38" and Under . . | \$50 | \$40 | \$30 | \$20 | \$15 | \$14 | \$13 | \$12 | \$11 | \$10 |
| 5151. Grand Champion, Miniature Gelding | Trophy | | | | | | | | | |
| 5152. Reserve Champion, Miniature Gelding | Rosette | | | | | | | | | |
| 5153. Mini Halter, Mare, Pony 10 Years & Under, 38" and Under . . . | \$50 | \$40 | \$30 | \$20 | \$15 | \$14 | \$13 | \$12 | \$11 | \$10 |
| 5154. Mini Halter, Mare, Pony 11 Years & Over, 38" and Under | \$50 | \$40 | \$30 | \$20 | \$15 | \$14 | \$13 | \$12 | \$11 | \$10 |
| 5155. Grand Champion, Miniature Mare | Trophy | | | | | | | | | |
| 5156. Reserve Champion, Miniature Mare | Rosette | | | | | | | | | |
| 5157. Mini Brood Mare and '10 Foal | \$50 | \$40 | \$30 | \$20 | \$10 | | | | | |
| 5158. Single Pony Draft Harness, Pony 50" and under, 2 Wheel Cart, Driver 19 years and Over NO MINIS | \$60 | \$50 | \$40 | \$30 | \$20 | | | | | |
| 5159. Single Pony Draft Harness, Pony 50" and under, 2 Wheel Cart, Driver 18 years and Under NO MINIS | \$60 | \$50 | \$40 | \$30 | \$20 | | | | | |
| 5160. Single Pony Draft Harness, Pony Over 50" and under 60" 2 Wheel Cart | \$60 | \$50 | \$40 | \$30 | \$20 | | | | | |
| 5161. Single Miniature Horse Draft Harness, 38" and under | \$60 | \$50 | \$40 | \$30 | \$20 | | | | | |
| 5162. Child's Pleasure, Pony 50" and Under, 2 Wheel Cart Driver 12 years and Under NO MINI's | \$60 | \$50 | \$40 | \$30 | \$20 | | | | | |
| 5163. Child's Pleasure, Pony Over 50" and Under 60", 2 Wheel Cart Driver 12 years and Under NO MINI's | \$60 | \$50 | \$40 | \$30 | \$20 | | | | | |
| 5164. Tandem Driving Class, Draft Harness, Ponies 50" and Under, 2 or 4 Wheel | \$80 | \$70 | \$60 | \$50 | \$40 | | | | | |
| 5165. Mini Pleasure, 38" and Under, 2 Wheel | \$60 | \$50 | \$40 | \$30 | \$20 | \$15 | \$14 | \$13 | \$12 | \$11 |



| Premium Number | 1st | 2nd | 3rd | 4th | 5th | 6th | 7th | 8th | 9th | 10th |
|----------------|-----|-----|-----|-----|-----|-----|-----|-----|-----|------|
|----------------|-----|-----|-----|-----|-----|-----|-----|-----|-----|------|

**FRIDAY - 11:00 a.m.
PONY HALTER & PERFORMANCE CLASSES**

| | | | | | | | | | | |
|--|-------|------|------|------|------|--|--|--|--|----------------|
| 5168. Welsh Broodmare and '10 foal, 50" and under | \$.50 | \$40 | \$30 | \$20 | \$10 | | | | | |
| 5169. Shetland Broodmare and '10 foal, 46" and under | \$.50 | \$40 | \$30 | \$20 | \$10 | | | | | |
| 5170. Haflinger or Fjord Broodmare and '10 foal, 60" and under | \$.50 | \$40 | \$30 | \$20 | \$10 | | | | | |
| 5171. Welsh Mare, 2 yrs. & under, 50" and under | \$.50 | \$40 | \$30 | \$20 | \$10 | | | | | |
| 5172. Shetland Mare, 2 yrs. & under, 46" and under | \$.50 | \$40 | \$30 | \$20 | \$10 | | | | | |
| 5173. Haflinger Mare, 2 yrs. & under, 60" and under | \$.50 | \$40 | \$30 | \$20 | \$10 | | | | | |
| 5174. Welsh Mare, 3 yrs. & over, 50" and under | \$.50 | \$40 | \$30 | \$20 | \$10 | | | | | |
| 5175. Grand Champion Welsh Mare | | | | | | | | | | Trophy |
| 5176. Reserve Champion Welsh Mare | | | | | | | | | | Rosette |
| 5177. Shetland Mare, 3 yrs. & over, 46" and under | \$.50 | \$40 | \$30 | \$20 | \$10 | | | | | |
| 5178. Grand Champion Shetland Mare | | | | | | | | | | Trophy |
| 5179. Reserve Champion Shetland Mare | | | | | | | | | | Rosette |
| 5180. Haflinger Mare, 3 yrs. & over, 60" and under | \$.50 | \$40 | \$30 | \$20 | \$10 | | | | | |
| 5181. Grand Champion Haflinger Mare | | | | | | | | | | Trophy |
| 5182. Reserve Champion Haflinger Mare | | | | | | | | | | Rosette |
| 5183. Fjord, Mare, All Ages, under 60" | \$.50 | \$40 | \$30 | \$20 | \$10 | | | | | |
| 5184. Grand Champion Fjord Mare | | | | | | | | | | Trophy |
| 5185. Reserve Champion Fjord Mare | | | | | | | | | | Rosette |
| 5186. Welsh Gelding, 50" and under age 4 & under | \$.50 | \$40 | \$30 | \$20 | \$10 | | | | | |
| 5187. Shetland gelding, 46" & under | \$.50 | \$40 | \$30 | \$20 | \$10 | | | | | |
| 5188. Grand Champion Shetland Gelding | | | | | | | | | | Trophy |
| 5189. Reserve Champion Shetland Gelding | | | | | | | | | | Rosette |
| 5190. Welsh Gelding, 50" and under age 5 & up | \$.50 | \$40 | \$30 | \$20 | \$10 | | | | | |
| 5191. Grand Champion Welsh Gelding | | | | | | | | | | Trophy |
| 5192. Reserve Champion Welsh Gelding | | | | | | | | | | Rosette |



ELKHORN
CHEMICAL & PACKAGING

Distributors for all your
Janitorial • Maintenance • Packaging • Safety
Needs

208 E. Morrissey Drive, Elkhorn, WI 53121

(262) 723-2646

Fax: (262) 723-6382

(800) 377-3556

www.elkhornchemical.com

| Premium Number | 1st | 2nd | 3rd | 4th | 5th | 6th | 7th | 8th | 9th | 10th |
|--|-------|----------------|------|------|------|------|------|------|------|------|
| 5193. Fjord Male, all ages, under 60" | \$50 | \$40 | \$30 | \$20 | \$10 | | | | | |
| 5194. Grand Champion Fjord Male | | Trophy | | | | | | | | |
| 5195. Reserve Champion Fjord Male | | Rosette | | | | | | | | |
| 5196. Welsh Stallion, 2 yrs. & under, 50" and under | \$50 | \$40 | \$30 | \$20 | \$10 | | | | | |
| 5197. Shetland Stallion, 2 yrs & under, 46" and under | \$50 | \$40 | \$30 | \$20 | \$10 | | | | | |
| 5198. Welsh Stallion, 3 yrs. & over, 50" and under | \$50 | \$40 | \$30 | \$20 | \$10 | | | | | |
| 5199. Grand Champion Welsh Stallion | | Trophy | | | | | | | | |
| 5200. Reserve Champion Welsh Stallion | | Rosette | | | | | | | | |
| 5201. Shetland Stallion, 3 yrs & over, 46" and under | \$50 | \$40 | \$30 | \$20 | \$10 | | | | | |
| 5202. Grand Champion Shetland Stallion | | Trophy | | | | | | | | |
| 5203. Reserve Champion Shetland Stallion | | Rosette | | | | | | | | |
| 5204. Haflinger, Male, all ages, under 60" | \$50 | \$40 | \$30 | \$20 | \$10 | | | | | |
| 5205. Grand Champion Haflinger Male | | Trophy | | | | | | | | |
| 5206. Reserve Champion Haflinger Male | | Rosette | | | | | | | | |
| 5207. Roadster Pony in Hand, 50" & under, shown Roadster Bridle Colors required | \$50 | \$40 | \$30 | \$20 | \$10 | | | | | |
| 5208. Foal, foaled current year, either sex, Welsh | \$50 | \$40 | \$30 | \$20 | \$10 | | | | | |
| 5209. Foal, foaled current year, either sex, Haflinger or Fjord | \$50 | \$40 | \$30 | \$20 | \$10 | | | | | |
| 5210. Foal, foaled current year, either sex, Shetland | \$50 | \$40 | \$30 | \$20 | \$10 | | | | | |
| 5211. Welsh Pleasure Driving, 2 wheel, Driver age 19 and over | \$60 | \$50 | \$40 | \$30 | \$20 | | | | | |
| 5212. Welsh Pleasure Driving, 2 wheel, Driver age 18 and under | \$60 | \$50 | \$40 | \$30 | \$20 | \$15 | \$14 | \$13 | \$12 | \$11 |
| 5213. Child's pleasure, 2 wheel, driver 12 and under, MINIS ONLY | \$60 | \$50 | \$40 | \$30 | \$20 | \$15 | \$14 | \$13 | \$12 | \$11 |
| 5214. Ladies's Pleasure, Driver 19 and Under, MINI'S ONLY | \$60 | \$50 | \$40 | \$30 | \$20 | \$15 | \$14 | \$13 | \$12 | \$11 |
| 5215. 4-Abreast, 4 Wheel Wagon (Trophy donated by Paul & Debbie Turner, Springfield, IL) | \$125 | \$100 | \$85 | \$60 | \$40 | | | | | |

SATURDAY - PERFORMANCE CLASSES & HITCH CLASSES - 9:00 A.M.

| | | | | | | | | | | |
|--|------|------|------|------|------|--|--|--|--|--|
| 5216. Ladies Pleasure, Ponies 50" & under NO MINIS | \$60 | \$50 | \$40 | \$30 | \$20 | | | | | |
| 5217. Ladies Pleasure, Ponies over 50", and under 60" | \$60 | \$50 | \$40 | \$30 | \$20 | | | | | |
| 5218. Ladies Pleasure, MINIS ONLY , Driver age 19 and over | \$60 | \$50 | \$40 | \$30 | \$20 | | | | | |
| 5219. Hetta Hopper Pleasure, Ladies 39 yrs. and older NO MINIS | \$60 | \$50 | \$40 | \$30 | \$20 | | | | | |
| 5220. Hetta Hopper/Jack Benny, Driver 39 yrs. and over MINIS ONLY | \$60 | \$50 | \$40 | \$30 | \$20 | | | | | |

GALLANO FARMS LTD.

3271 Newburg Road
Belvidere, IL 61008-8611

John & Steve Gallano email: johnandsteve@insightbb.com

815-547-4220 • FAX: 815-547-9454

P.O. Box 313
1467 McKinley Rd.
Belvidere, IL 61008-0313
Phone: 815-544-1169
Fax: 815-544-6014

Email: transport@gallanotruckinginc.com

Web Site: www.gallanotruckinginc.com



DAVE GALLANO

Mobile: 815-378-9352

Res: 815-544-1018 & 815-332-7571

BRIAN GALLANO

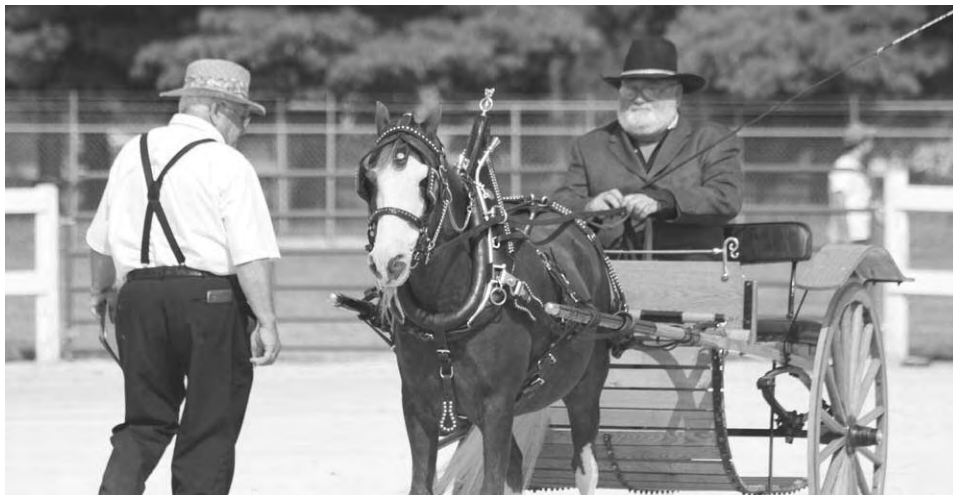
Mobile: 815-378-9353

Res: 815-332-2041

| Premium Number | 1st | 2nd | 3rd | 4th | 5th | 6th | 7th | 8th | 9th | 10th |
|--|------|------|------|------|------|------|------|------|------|------|
| 5221. Jack Benny Pleasure, Men 39 yrs. and over NO MINIS | \$60 | \$50 | \$40 | \$30 | \$20 | | | | | |
| 5222. Young Adult Pleasure, 2-wheel, 13-18 yrs. MINIS ONLY | \$60 | \$50 | \$40 | \$30 | \$20 | \$15 | \$14 | \$13 | \$12 | \$11 |
| 5223. Open Pleasure Drive, Men, 2-wheel Ponies 50" and under NO MINIS | \$60 | \$50 | \$40 | \$30 | \$20 | | | | | |
| 5224. Open Pleasure Drive, Men 2-wheel Ponies over 50" under 60". | \$60 | \$50 | \$40 | \$30 | \$20 | | | | | |
| 5225. Open Pleasure Drive, Men, Driver age 19 and over, MINIS ONLY | \$60 | \$50 | \$40 | \$30 | \$20 | | | | | |
| 5226. Open Fine Harness, 4-wheel Viceroy | \$60 | \$50 | \$40 | \$30 | \$20 | | | | | |
| 5227. Young Adult Pleasure, 2-wheel 13-18 yrs., Ponies under 50" NO MINIS | \$60 | \$50 | \$40 | \$30 | \$20 | \$15 | \$14 | \$13 | \$12 | \$11 |
| 5228. Young Adult Pleasure, 2-wheel 13-18 yrs., Ponies over 50" and under 60" | \$60 | \$50 | \$40 | \$30 | \$20 | | | | | |
| 5229. Shetland Roadster, colors required | \$60 | \$50 | \$40 | | | | | | | |
| 5230. Open Pony Roadster, colors required | \$60 | \$50 | \$40 | \$30 | \$20 | | | | | |
| 5231. Welsh Roadster, colors required | \$60 | \$50 | \$40 | | | | | | | |
| 5232. Shetland Pleasure Driving | \$60 | \$50 | \$40 | \$30 | \$20 | | | | | |

HITCH CLASS (time to be announced)

| | | | | | | | | | | |
|---|-------|-------|-------|------|------|------|------|--|--|--|
| 5240. Men's Team, 4-wheel wagon, Driver over 21, Ponies under 50" NO MINIS | \$100 | \$85 | \$70 | \$60 | \$50 | | | | | |
| 5241. Ladies Team, 4-wheel wagon, Driver over 21, Ponies under 50" NO MINIS | \$100 | \$85 | \$70 | \$60 | \$50 | | | | | |
| 5242. Jr. 2-Pony Hitch, MINIS ONLY Driver 21 yrs. and under | \$75 | \$65 | \$55 | \$45 | \$35 | | | | | |
| 5243. Jr. 2-Pony Hitch, 4-wheel wagon, Driver 21 yrs. and under Ponies under 60" NO MINIS (<i>Trophy donated by Jan Ethington, Roscoe, IL</i>) | \$100 | \$85 | \$70 | \$60 | \$50 | | | | | |
| 5244. Team, 4-wheel wagon, Ponies over 50" under 60" | \$100 | \$85 | \$70 | \$60 | \$50 | | | | | |
| 5245. Mini Team Class 38" and under | \$100 | \$85 | \$70 | \$60 | \$50 | | | | | |
| 5246. Antique Vehicle, 2 or 4-wheel vehicle, team or single | \$125 | \$115 | \$100 | \$85 | \$70 | \$60 | \$50 | | | |
| 5247. Unicorn draft harness, 4-wheel wagon Ponies under 50" NO MINIS | \$110 | \$100 | \$90 | \$80 | \$70 | | | | | |
| 5248. Unicorn draft harness, 4-wheel wagon Ponies over 50" under 60" | \$110 | \$100 | \$90 | \$80 | \$70 | | | | | |
| 5249. 4-Pony Hitch, 4-wheel wagon, Ponies under 50" NO MINIS | \$125 | \$100 | \$90 | \$80 | \$70 | | | | | |
| 5250. 4-Pony Hitch, 4-wheel wagon, Ponies Over 50" and under 60" | \$125 | \$100 | \$90 | \$80 | \$70 | | | | | |
| 5251. 6-Pony Hitch, 4-wheel wagon | \$130 | \$115 | \$100 | \$90 | \$80 | | | | | |
| 5252. JR. Team, School class, Ponies 3 Yrs. & under, 4-wheel wagon NO MINIS | \$100 | \$85 | \$70 | \$60 | \$50 | | | | | |
| 5253. 8-Pony Hitch | \$100 | \$85 | \$70 | | | | | | | |



PREMIUM LIST

Department S – Harness Races

Speed Superintendent - Wayne Weaver & Robert "Bucky" Eschbach

Speed Office: (815) 547-8939

Best Horse in Summary of Each Race Winner of Blanket Donated by Boone County Fair Association

May Purchase Exhibitor's Ticket or Pay at Gate

\$100 Entry Fee on ICF 4 Year Old & Up

Overnight Entry Fee: \$20.00 – Maintenance Fee: \$20.00 - Entry Fee: \$100.00 – Stall Rent \$15.00/Day

\$50.00 Entry Fee on 4 Year Old & Up ICF Boone County Trot

Entry Fee to Accompany Entry

N.I.C.A. & U.S.T.A. Rules to Govern

50 percent – 25 percent – 12 percent – 8 percent – 5 percent

State Health Regulations apply.

Premiums Offered – \$37,500.00

(72-Hour Box – Entries 7:30 a.m. to 10:00 a.m.)
 Association reserves the right to declare off any race not filling satisfactorily and reserves the right to require five or more starters. If all races carded have sufficient starters to race (also reserves the right to race elimination heats), all races will be two heats, 50 percent of purse each heat. If all races carded do not have sufficient starters causing cancellation of any races, three heats will be required to make a complete program, 1/3 or purse each heat; or Association has right to cancel any race or complete program. Association not liable for accidents. Fair Association does not cover drivers insurance.

| Premium Number | Premium Number |
|----------------|----------------|
|----------------|----------------|

N.I.C.A. SPEEDS PROGRAM
(Tuesday, August 10th, 12:00 Noon)
Speed Office Phone: (815) 547-8939

(Wednesday, August 11th, 12:00 Noon)
No Entry Blanks

- Event #1 TROT – 2 Year Old NICA Class AEst. \$6,000.00
- Event #2 PACE – 2 Year Old NICA Class AEst. \$6,000.00
- 4000. TROT – "The Boone County" 4 Year Old & Up ICF EST (\$50.00 Entry Fee) Est. \$4,500.00
- 4001. TROT – NW \$1,500 LT\$1,000.00

- Event #3 PACE – 3 Year Old NICA Class AEst. \$6,000.00
- Event #4 TROT – 3 Year Old NICA Class AEst. \$6,000.00
- 4003. PACE – NW \$1,000.00 LT \$1,000.00
- 4004. PACE – 4 Year Old & Up ICF\$7,000.00

Overnights will go 2 (two) heats if needed to fill afternoon program.

Beaver Valley Grange

You'll find Granges stand for:

Granges **R**epresent **A**griculture **N**eighborliness **G**odliness **E**ducation **S**ervice

Our regular Meeting Time is:

2nd Friday of the month at 7:30 p.m.

Held at the Boone County Community Grange Hall on the fairgrounds.

Serving your community

Benefitting the family

Helping the farmers

For more information or to join, contact:

Steve Paulson at 815-742-0325 or spaulson11@charter.net



PREMIUM LIST

Department U – Dairy Goats

Jr. Doe & Sr. Doe Open Show & Milking Competition

ELLIS MUNDY, Superintendent (815-544-1690)

MIKE MUNDY Co-Superintendent

DAWN REYNOLDS and PAT WHALEN (262) 724-3427, Secretaries

Exhibitor passes and vehicle stickers will NOT be mailed. They must be picked up at the Administration Bldg.

Premiums Offered – \$8,953.00

Judge – Edward Cavanagh, Toledo, Ontario

Entry Fee: \$3.00 per class (\$2.75 entry + .25 fees)

No refunds show week No substitutions unless same class

Mailed entries must be postmarked before midnight, Saturday, July 17th

WALK-IN ENTRIES WILL NOT BE ACCEPTED

Do Not Make Entries For Champions

Pen Fee: \$4.00 Only one tack pen per exhibitor Exhibitors Ticket: \$12.00

Administration Fee \$3.00 Per Dept., includes 4-H exhibitors, no fee for junior dept. if entered in open show.

All entry forms must have at least 1 exhibitor ticket purchased unless 4-H

For a Sunday morning release, see RULE #14, PAGE 10

All fees and entries MUST be mailed to Ellis Mundy, 218 Gardner St., Belvidere, IL 61008.

This show is sanctioned by the American Dairy Goat Association and their rules shall govern. The Jr. Doe Show is separately sanctioned from the Sr. Doe show. Group classes are not ADGA sanctioned.

All animals must meet the State of Illinois health requirements that are listed in front of the Book. ALL ANIMALS WILL BE SCRATCHED FROM THE SHOW FOR UNHEALTHY CONDITIONS AT THE DISCRETION OF THE SHOW COMMITTEE OR SUPERINTENDENTS AND WILL NOT BE ALLOWED TO REMAIN ON THE FAIRGROUNDS. ANY ANIMALS WITH EVIDENCE OF SORE MOUTH, ABSCESSSES, OR RINGWORM WILL NOT BE ALLOWED ON THE GROUNDS. If there is any problem regarding their ruling, a veterinarian will be called at the exhibitor's expense.

The original registration certificate is required for all animals 6 months of age or older. The original registration certificate or stamped duplicate by ADGA is required for all animals under 6 months of age. All registrations are to be shown to the Secretary prior to the show. No copies of the registration certificate or the stamped duplicates, telegrams or phone calls will be accepted in lieu of the original certificate. All animals being shown must be registered in the name of the exhibitor. Registration papers will be checked upon arrival.

Animals must be in place by 4:00 p.m. FIRM Thursday, August 12th, and will remain in place until released at 4:00 p.m. DST Sunday, August 15th. **Check-in time is 8 p.m. FIRM. If there is a legitimate emergency and you will be late, you MUST notify the Fair office and they will let the Superintendent know. Unexcused late arrivals will NOT be admitted.**

No horned animals or males will be allowed on the grounds.

Three entries per exhibitor will be allowed per class; however, only two premiums will be paid to any one exhibitor in any one class. **One entry per exhibitor**

will be allowed tin group classes. Exhibitors showing permanent champions – as a courtesy to others, should show in the Champion Challenge Class.

All livestock exhibitor's trucks, trailers and vehicles must be parked outside the gates.

Animals will be judged on Friday, August 13th, 8:00 a.m. by listed Breed, Jr. Does, Sr. Does and group classes.

CLASS DEFINITIONS

INDIVIDUAL CLASSES

| | |
|--------------------------------|---|
| Junior Kid | Born on or after April 1, 2010 |
| Intermediate Kid | March 1, 2010 to March 31, 2010 |
| Senior Kid | January 1, 2010 to February 28, 2010 |
| Dry Yearling | Under 2 years – Born after Aug. 2, 2009 |
| Milking Yearling | Under 2 years – Born after Aug. 2, 2009 |
| Milker 2 years & under 3 | August 2, 2007 to August 1, 2008 |
| Milker 3 years & under 5 | August 2, 2005 to August 1, 2007 |
| Milker 5 years & older | Born before August 2, 2005 |

GROUP CLASSES – One entry per exhibitor

Get of Sire: To consist of three (3) does, the offspring of any one sire. Animals need not be owned by the same exhibitor.

Produce of Dam: To consist of two (2) does which are the offspring of one dam.

Breeder's Trio: To consist of three (3) does any age bred and owned by one exhibitor.

Dam and Daughter: Any age, owned by one exhibitor. Dam must be named.

Group classes animals must be owned by the same exhibitor unless otherwise stated. All animals in group classes must be shown in individual classes.

Premium Number

1st 2nd 3rd 4th 5th 6th 7th 8th 9th 10th

ALPINE DOES

| | | | | | | | | | | |
|--|----------------|------|------|------|-----|-----|-----|-----|-----|-----|
| 4050. Junior Kid | \$20 | \$16 | \$12 | \$9 | \$8 | \$7 | \$6 | \$5 | \$4 | \$3 |
| 4051. Intermediate Kid | \$20 | \$16 | \$12 | \$9 | \$8 | \$7 | \$6 | \$5 | \$4 | \$3 |
| 4052. Senior Kid | \$20 | \$16 | \$12 | \$9 | \$8 | \$7 | \$6 | \$5 | \$4 | \$3 |
| 4053. Dry Yearling | \$20 | \$16 | \$12 | \$9 | \$8 | \$7 | \$6 | \$5 | \$4 | \$3 |
| 4054. Grand Champion Jr. Doe | Rosette | | | | | | | | | |
| 4055. Reserve Grand Champion Jr. Doe | Rosette | | | | | | | | | |
| 4056. Yearling Milker | \$20 | \$16 | \$12 | \$9 | \$8 | \$7 | \$6 | \$5 | \$4 | \$3 |
| 4057. Milker 2 and under 3 | \$20 | \$16 | \$12 | \$9 | \$8 | \$7 | \$6 | \$5 | \$4 | \$3 |
| 4058. Milker 3 and under 5 | \$20 | \$16 | \$12 | \$9 | \$8 | \$7 | \$6 | \$5 | \$4 | \$3 |
| 4059. Milker 5 and over | \$20 | \$16 | \$12 | \$9 | \$8 | \$7 | \$6 | \$5 | \$4 | \$3 |
| 4060. Grand Champion Sr. Doe | Rosette | | | | | | | | | |
| 4061. Reserve Grand Champion Sr. Doe | Rosette | | | | | | | | | |
| 4062. Champion Challenge | \$30 | \$28 | \$25 | \$20 | | | | | | |
| 4063. Get of Sire | \$20 | \$16 | \$12 | \$9 | \$8 | \$7 | \$6 | \$5 | \$4 | \$3 |
| 4064. Produce of Dam | \$20 | \$16 | \$12 | \$9 | \$8 | \$7 | \$6 | \$5 | \$4 | \$3 |
| 4065. Breeders Trio | \$20 | \$16 | \$12 | \$9 | \$8 | \$7 | \$6 | \$5 | \$4 | \$3 |
| 4066. Dam & Daughter | \$20 | \$16 | \$12 | \$9 | \$8 | \$7 | \$6 | \$5 | \$4 | \$3 |

| Premium Number | 1st | 2nd | 3rd | 4th | 5th | 6th | 7th | 8th | 9th | 10th |
|--------------------------------------|---------|------|------|------|-----|-----|-----|-----|-----|------|
| NUBIAN DOES | | | | | | | | | | |
| 4067. Junior Kid | \$20 | \$16 | \$12 | \$9 | \$8 | \$7 | \$6 | \$5 | \$4 | \$3 |
| 4068. Intermediate Kid | \$20 | \$16 | \$12 | \$9 | \$8 | \$7 | \$6 | \$5 | \$4 | \$3 |
| 4069. Senior Kid | \$20 | \$16 | \$12 | \$9 | \$8 | \$7 | \$6 | \$5 | \$4 | \$3 |
| 4070. Dry Yearling | \$20 | \$16 | \$12 | \$9 | \$8 | \$7 | \$6 | \$5 | \$4 | \$3 |
| 4071. Grand Champion Jr. Doe | Rosette | | | | | | | | | |
| 4072. Reserve Grand Champion Jr. Doe | Rosette | | | | | | | | | |
| 4073. Yearling Milker | \$20 | \$16 | \$12 | \$9 | \$8 | \$7 | \$6 | \$5 | \$4 | \$3 |
| 4074. Milker 2 and under 3 | \$20 | \$16 | \$12 | \$9 | \$8 | \$7 | \$6 | \$5 | \$4 | \$3 |
| 4075. Milker 3 and under 5 | \$20 | \$16 | \$12 | \$9 | \$8 | \$7 | \$6 | \$5 | \$4 | \$3 |
| 4076. Milker 5 and over | \$20 | \$16 | \$12 | \$9 | \$8 | \$7 | \$6 | \$5 | \$4 | \$3 |
| 4077. Grand Champion Sr. Doe | Rosette | | | | | | | | | |
| 4078. Reserve Grand Champion Sr. Doe | Rosette | | | | | | | | | |
| 4079. Champion Challenge | \$30 | \$28 | \$25 | \$20 | | | | | | |
| 4080. Get of Sire | \$20 | \$16 | \$12 | \$9 | \$8 | \$7 | \$6 | \$5 | \$4 | \$3 |
| 4081. Produce of Dam | \$20 | \$16 | \$12 | \$9 | \$8 | \$7 | \$6 | \$5 | \$4 | \$3 |
| 4082. Breeders Trio | \$20 | \$16 | \$12 | \$9 | \$8 | \$7 | \$6 | \$5 | \$4 | \$3 |
| 4083. Dam & Daughter | \$20 | \$16 | \$12 | \$9 | \$8 | \$7 | \$6 | \$5 | \$4 | \$3 |
| SAANEN DOES | | | | | | | | | | |
| 4084. Junior Kid | \$20 | \$16 | \$12 | \$9 | \$8 | \$7 | \$6 | \$5 | \$4 | \$3 |
| 4085. Intermediate Kid | \$20 | \$16 | \$12 | \$9 | \$8 | \$7 | \$6 | \$5 | \$4 | \$3 |
| 4086. Senior Kid | \$20 | \$16 | \$12 | \$9 | \$8 | \$7 | \$6 | \$5 | \$4 | \$3 |
| 4087. Dry Yearling | \$20 | \$16 | \$12 | \$9 | \$8 | \$7 | \$6 | \$5 | \$4 | \$3 |
| 4088. Grand Champion Jr. Doe | Rosette | | | | | | | | | |
| 4089. Reserve Grand Champion Jr. Doe | Rosette | | | | | | | | | |
| 4090. Yearling Milker | \$20 | \$16 | \$12 | \$9 | \$8 | \$7 | \$6 | \$5 | \$4 | \$3 |
| 4091. Milker 2 and under 3 | \$20 | \$16 | \$12 | \$9 | \$8 | \$7 | \$6 | \$5 | \$4 | \$3 |
| 4092. Milker 3 and under 5 | \$20 | \$16 | \$12 | \$9 | \$8 | \$7 | \$6 | \$5 | \$4 | \$3 |
| 4093. Milker 5 and over | \$20 | \$16 | \$12 | \$9 | \$8 | \$7 | \$6 | \$5 | \$4 | \$3 |
| 4094. Grand Champion Sr. Doe | Rosette | | | | | | | | | |
| 4095. Reserve Grand Champion Sr. Doe | Rosette | | | | | | | | | |
| 4096. Champion Challenge | \$30 | \$28 | \$25 | \$20 | | | | | | |
| 4097. Get of Sire | \$20 | \$16 | \$12 | \$9 | \$8 | \$7 | \$6 | \$5 | \$4 | \$3 |
| 4098. Produce of Dam | \$20 | \$16 | \$12 | \$9 | \$8 | \$7 | \$6 | \$5 | \$4 | \$3 |
| 4099. Breeders Trio | \$20 | \$16 | \$12 | \$9 | \$8 | \$7 | \$6 | \$5 | \$4 | \$3 |
| 4100. Dam & Daughter | \$20 | \$16 | \$12 | \$9 | \$8 | \$7 | \$6 | \$5 | \$4 | \$3 |
| LAMANCHA DOES | | | | | | | | | | |
| 4101. Junior Kid | \$20 | \$16 | \$12 | \$9 | \$8 | \$7 | \$6 | \$5 | \$4 | \$3 |
| 4102. Intermediate Kid | \$20 | \$16 | \$12 | \$9 | \$8 | \$7 | \$6 | \$5 | \$4 | \$3 |
| 4103. Senior Kid | \$20 | \$16 | \$12 | \$9 | \$8 | \$7 | \$6 | \$5 | \$4 | \$3 |
| 4104. Dry Yearling | \$20 | \$16 | \$12 | \$9 | \$8 | \$7 | \$6 | \$5 | \$4 | \$3 |
| 4105. Grand Champion Jr. Doe | Rosette | | | | | | | | | |
| 4106. Reserve Grand Champion Jr. Doe | Rosette | | | | | | | | | |
| 4107. Yearling Milker | \$20 | \$16 | \$12 | \$9 | \$8 | \$7 | \$6 | \$5 | \$4 | \$3 |
| 4108. Milker 2 and under 3 | \$20 | \$16 | \$12 | \$9 | \$8 | \$7 | \$6 | \$5 | \$4 | \$3 |
| 4109. Milker 3 and under 5 | \$20 | \$16 | \$12 | \$9 | \$8 | \$7 | \$6 | \$5 | \$4 | \$3 |
| 4110. Milker 5 and over | \$20 | \$16 | \$12 | \$9 | \$8 | \$7 | \$6 | \$5 | \$4 | \$3 |
| 4111. Grand Champion Sr. Doe | Rosette | | | | | | | | | |
| 4112. Reserve Grand Champion Sr. Doe | Rosette | | | | | | | | | |
| 4113. Champion Challenge | \$30 | \$28 | \$25 | \$20 | | | | | | |
| 4114. Get of Sire | \$20 | \$16 | \$12 | \$9 | \$8 | \$7 | \$6 | \$5 | \$4 | \$3 |
| 4115. Produce of Dam | \$20 | \$16 | \$12 | \$9 | \$8 | \$7 | \$6 | \$5 | \$4 | \$3 |
| 4116. Breeders Trio | \$20 | \$16 | \$12 | \$9 | \$8 | \$7 | \$6 | \$5 | \$4 | \$3 |
| 4117. Dam & Daughter | \$20 | \$16 | \$12 | \$9 | \$8 | \$7 | \$6 | \$5 | \$4 | \$3 |
| TOGGENBURG | | | | | | | | | | |
| 4118. Junior Kid | \$20 | \$16 | \$12 | \$9 | \$8 | \$7 | \$6 | \$5 | \$4 | \$3 |
| 4119. Intermediate Kid | \$20 | \$16 | \$12 | \$9 | \$8 | \$7 | \$6 | \$5 | \$4 | \$3 |
| 4120. Senior Kid | \$20 | \$16 | \$12 | \$9 | \$8 | \$7 | \$6 | \$5 | \$4 | \$3 |
| 4121. Dry Yearling | \$20 | \$16 | \$12 | \$9 | \$8 | \$7 | \$6 | \$5 | \$4 | \$3 |
| 4122. Grand Champion Jr. Doe | Rosette | | | | | | | | | |
| 4123. Reserve Grand Champion Jr. Doe | Rosette | | | | | | | | | |
| 4124. Yearling Milker | \$20 | \$16 | \$12 | \$9 | \$8 | \$7 | \$6 | \$5 | \$4 | \$3 |
| 4125. Milker 2 and under 3 | \$20 | \$16 | \$12 | \$9 | \$8 | \$7 | \$6 | \$5 | \$4 | \$3 |
| 4126. Milker 3 and under 5 | \$20 | \$16 | \$12 | \$9 | \$8 | \$7 | \$6 | \$5 | \$4 | \$3 |
| 4127. Milker 5 and over | \$20 | \$16 | \$12 | \$9 | \$8 | \$7 | \$6 | \$5 | \$4 | \$3 |
| 4128. Grand Champion Sr. Doe | Rosette | | | | | | | | | |
| 4129. Reserve Grand Champion Sr. Doe | Rosette | | | | | | | | | |
| 4130. Champion Challenge | \$30 | \$28 | \$25 | \$20 | | | | | | |
| 4131. Get of Sire | \$20 | \$16 | \$12 | \$9 | \$8 | \$7 | \$6 | \$5 | \$4 | \$3 |
| 4132. Produce of Dam | \$20 | \$16 | \$12 | \$9 | \$8 | \$7 | \$6 | \$5 | \$4 | \$3 |
| 4133. Breeders Trio | \$20 | \$16 | \$12 | \$9 | \$8 | \$7 | \$6 | \$5 | \$4 | \$3 |
| 4134. Dam & Daughter | \$20 | \$16 | \$12 | \$9 | \$8 | \$7 | \$6 | \$5 | \$4 | \$3 |
| OBERHASLIS | | | | | | | | | | |
| 4135. Junior Kid | \$20 | \$16 | \$12 | \$9 | \$8 | \$7 | \$6 | \$5 | \$4 | \$3 |
| 4136. Intermediate Kid | \$20 | \$16 | \$12 | \$9 | \$8 | \$7 | \$6 | \$5 | \$4 | \$3 |

| Premium Number | 1st | 2nd | 3rd | 4th | 5th | 6th | 7th | 8th | 9th | 10th |
|--------------------------------------|---------|------|------|------|-----|-----|-----|-----|-----|------|
| 4137. Senior Kid | \$20 | \$16 | \$12 | \$9 | \$8 | \$7 | \$6 | \$5 | \$4 | \$3 |
| 4138. Dry Yearling | \$20 | \$16 | \$12 | \$9 | \$8 | \$7 | \$6 | \$5 | \$4 | \$3 |
| 4139. Grand Champion Jr. Doe | Rosette | | | | | | | | | |
| 4140. Reserve Grand Champion Jr. Doe | Rosette | | | | | | | | | |
| 4141. Yearling Milker | \$20 | \$16 | \$12 | \$9 | \$8 | \$7 | \$6 | \$5 | \$4 | \$3 |
| 4142. Milker 2 and under 3 | \$20 | \$16 | \$12 | \$9 | \$8 | \$7 | \$6 | \$5 | \$4 | \$3 |
| 4143. Milker 3 and under 5 | \$20 | \$16 | \$12 | \$9 | \$8 | \$7 | \$6 | \$5 | \$4 | \$3 |
| 4144. Milker 5 and over | \$20 | \$16 | \$12 | \$9 | \$8 | \$7 | \$6 | \$5 | \$4 | \$3 |
| 4145. Grand Champion Sr. Doe | Rosette | | | | | | | | | |
| 4146. Reserve Grand Champion Sr. Doe | Rosette | | | | | | | | | |
| 4147. Champion Challenge | \$30 | \$28 | \$25 | \$20 | | | | | | |
| 4148. Get of Sire | \$20 | \$16 | \$12 | \$9 | \$8 | \$7 | \$6 | \$5 | \$4 | \$3 |
| 4149. Produce of Dam | \$20 | \$16 | \$12 | \$9 | \$8 | \$7 | \$6 | \$5 | \$4 | \$3 |
| 4150. Breeders Trio | \$20 | \$16 | \$12 | \$9 | \$8 | \$7 | \$6 | \$5 | \$4 | \$3 |
| 4151. Dam & Daughter | \$20 | \$16 | \$12 | \$9 | \$8 | \$7 | \$6 | \$5 | \$4 | \$3 |
| RECORDED GRADE DOES | | | | | | | | | | |
| 4152. Junior Kid | \$20 | \$16 | \$12 | \$9 | \$8 | \$7 | \$6 | \$5 | \$4 | \$3 |
| 4153. Intermediate Kid | \$20 | \$16 | \$12 | \$9 | \$8 | \$7 | \$6 | \$5 | \$4 | \$3 |
| 4154. Senior Kid | \$20 | \$16 | \$12 | \$9 | \$8 | \$7 | \$6 | \$5 | \$4 | \$3 |
| 4155. Dry Yearling | \$20 | \$16 | \$12 | \$9 | \$8 | \$7 | \$6 | \$5 | \$4 | \$3 |
| 4156. Grand Champion Jr. Doe | Rosette | | | | | | | | | |
| 4157. Reserve Grand Champion Jr. Doe | Rosette | | | | | | | | | |
| 4158. Yearling Milker | \$20 | \$16 | \$12 | \$9 | \$8 | \$7 | \$6 | \$5 | \$4 | \$3 |
| 4159. Milker 2 and under 3 | \$20 | \$16 | \$12 | \$9 | \$8 | \$7 | \$6 | \$5 | \$4 | \$3 |
| 4160. Milker 3 and under 5 | \$20 | \$16 | \$12 | \$9 | \$8 | \$7 | \$6 | \$5 | \$4 | \$3 |
| 4161. Milker 5 and over | \$20 | \$16 | \$12 | \$9 | \$8 | \$7 | \$6 | \$5 | \$4 | \$3 |
| 4162. Grand Champion Sr. Doe | Rosette | | | | | | | | | |
| 4163. Reserve Grand Champion Sr. Doe | Rosette | | | | | | | | | |
| 4164. Champion Challenge | \$30 | \$28 | \$25 | \$20 | | | | | | |
| 4165. Get of Sire | \$20 | \$16 | \$12 | \$9 | \$8 | \$7 | \$6 | \$5 | \$4 | \$3 |
| 4166. Produce of Dam | \$20 | \$16 | \$12 | \$9 | \$8 | \$7 | \$6 | \$5 | \$4 | \$3 |
| 4167. Breeders Trio | \$20 | \$16 | \$12 | \$9 | \$8 | \$7 | \$6 | \$5 | \$4 | \$3 |
| 4168. Dam & Daughter | \$20 | \$16 | \$12 | \$9 | \$8 | \$7 | \$6 | \$5 | \$4 | \$3 |
| 4169. BEST JUNIOR DOE IN SHOW | Trophy | | | | | | | | | |
| 4170. BEST SENIOR DOE IN SHOW | Trophy | | | | | | | | | |

MILKING COMPETITION

Competition is open to any goat registered or recorded in ADGA, AGS, or CGS. Does must be identified by tattoos which are to be checked against their registration papers.

No milking machines allowed. Competing does are not to be fed milk, thyroprotein or any tonic or condition powder which states on the label that it will increase milk production.

All does will be milked out at 8:00 p.m. Friday evening, August 13th in the show ring, at which time tattoos might be checked against the registration papers. Does will then be milked Saturday morning at 8:00 a.m. in the show ring and milk weighed and placement of goats will be based on the amount of milk yielded at this time. Does do not have to be shown in the open show.

| Premium Number | 1st | 2nd | 3rd |
|--------------------------|------|-----|-----|
| ALPINE DOES | | | |
| 4175. Yearling Milker | \$10 | \$8 | \$6 |
| 4176. Milker 2 & under 3 | \$10 | \$8 | \$6 |
| 4177. Milker 3 & under 5 | \$10 | \$8 | \$6 |
| 4178. Milker 5 & older | \$10 | \$8 | \$6 |
| NUBIAN DOES | | | |
| 4179. Yearling Milker | \$10 | \$8 | \$6 |
| 4180. Milker 2 & under 3 | \$10 | \$8 | \$6 |
| 4181. Milker 3 & under 5 | \$10 | \$8 | \$6 |
| 4182. Milker 5 & older | \$10 | \$8 | \$6 |
| SAANEN DOES | | | |
| 4183. Yearling Milker | \$10 | \$8 | \$6 |
| 4184. Milker 2 & under 3 | \$10 | \$8 | \$6 |
| 4185. Milker 3 & under 5 | \$10 | \$8 | \$6 |
| 4186. Milker 5 & older | \$10 | \$8 | \$6 |
| LAMANCHA DOES | | | |
| 4187. Yearling Milker | \$10 | \$8 | \$6 |
| 4188. Milker 2 & under 3 | \$10 | \$8 | \$6 |

| Premium Number | 1st | 2nd | 3rd |
|--------------------------|------|-----|-----|
| 4189. Milker 3 & under 5 | \$10 | \$8 | \$6 |
| 4190. Milker 5 & older | \$10 | \$8 | \$6 |

TOGGENBURG

| | | | |
|--------------------------|------|-----|-----|
| 4191. Yearling Milker | \$10 | \$8 | \$6 |
| 4192. Milker 2 & under 3 | \$10 | \$8 | \$6 |
| 4193. Milker 3 & under 5 | \$10 | \$8 | \$6 |
| 4194. Milker 5 & older | \$10 | \$8 | \$6 |

OBERHASLIS

| | | | |
|--------------------------|------|-----|-----|
| 4195. Yearling Milker | \$10 | \$8 | \$6 |
| 4196. Milker 2 & under 3 | \$10 | \$8 | \$6 |
| 4197. Milker 3 & under 5 | \$10 | \$8 | \$6 |
| 4198. Milker 5 & older | \$10 | \$8 | \$6 |

RECORDED GRADE DOES

| | | | |
|--------------------------|--------|-----|-----|
| 4199. Yearling Milker | \$10 | \$8 | \$6 |
| 4200. Milker 2 & under 3 | \$10 | \$8 | \$6 |
| 4201. Milker 3 & under 5 | \$10 | \$8 | \$6 |
| 4202. Milker 5 & older | \$10 | \$8 | \$6 |
| 4203. BEST MILKING DOE | Trophy | | |

JUDY OWENS
Executive Director

Village Office:
401 Kenneally Boulevard
Gladstone MI 49837

Phone:
1.877.428.0085
1.906.428.0085

Fax:
1.906.428.4742

E-mail: lakebluffvillage@charterinternet.com
Website: www.lakebluffretirement.com



Lake Bluff
Retirement Village
An Adult Gated Community

PREMIUM LIST

Department Z – Rodeo

Saturday, August 14, 2010

Performance Time: 4:00 p.m. and 8:00 p.m.

Entry Fees: Bareback & Saddle Bronc Riding & Bull Riding: \$60.00

Entry Fees: Tie Down & Team Roping, Barrel Racing & Steer Wrestling: \$50.00

Premiums: \$6,500.00 each Rodeo Show

Total for both Rodeos: \$13,000.00

Added Money: Bareback & Saddle Bronc Riding: \$1,350.00; Bull Riding: \$1,000.00;

Tie Down Roping, Steer Wrestling, Team Roping & Barrel Racing: \$800.00

Purse for each class split

| | | | |
|-----|-----|-----|-----|
| 1st | 2nd | 3rd | 4th |
| 40% | 30% | 20% | 10% |

DISCLAIMER: If only three places are paid, rates would be 50%, 30%, 20%. If only two places are paid, rates would be 60%, 40%. If only one place is paid, rate would be 100%.

Entries will be taken on Monday, August 9, 2010 from 8 a.m. to 5 p.m. CST. Call 1-800-639-9002 to enter during those times.

Any contestant under the age of 18 must have a signed parental release form on file with the IPRA and/or Big Hat Rodeo Co. All non-IPRA members must pay a \$10, non-member fee and buy contestant insurance from the rodeo secretary when they pay their entry fees.

Questions call Lenora Calzavara Nolan, Big Hat Rodeo Company at 815-648-1957.

- 4250.Bareback Riding
 - 4251.Tie Down Roping
 - 4252.Saddle Bronc Riding
 - 4253.Steer Wrestling
 - 4254.Cowgirls Barrel Racing
 - 4255.Team Roping
 - 4256.Bull Riding
 - 4257.Novice Bareback
 - 4258.Saddle Bronc Riding
- (Novice events are open to all contestants who have not earned a total of \$1,000.00 in the event they are entering as novices.)



***Serving
Award-winning
frozen custard***

**Serving burgers, fries,
Chicago-style hot dogs,
Homemade
pulled pork sandwiches & more!**

13561 Julie Drive
Poplar Grove, IL
815-765-2500

1 block east of the Marathon on Rt. 76

***Opened
March thru October***

2010 BOONE COUNTY FAIR

Camping Pre-Registration

Register Early and take the *rush* and *confusion* out of your Boone County Fair camping! Make checks payable to Boone County Fair, and mail to Stoxen Ice & RV Parking, 11584 W. Goddard Rd., Lena, IL 61048. The charge for camping and Stock Vehicles is \$25 a day for 30 amp and under service and \$40 a day for 50 amp service. The charge will be applied each calendar day the camper or vehicle is plugged in. **Questions call 815-369-2240.**

Name: _____

Address: _____

Phone: _____

Please indicate the length and type (**M**otor home or **P**ull type or **5W** fifth wheel) of each trailer you want to register. Also please indicate the **Location** if you are a **VENDOR** or which **BARN** you have livestock in:

Trailer 1: _____ Location: _____

Trailer 2: _____ Location: _____

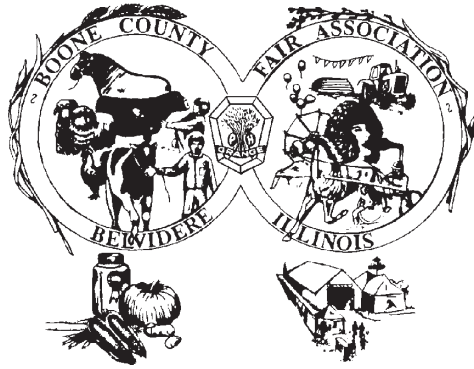
Trailer 3: _____ Location: _____

NOTE: CHECKS will be accepted until July 15, **CASH ONLY** after.

Livestock people have **first** placement others will be put on a waiting list. **One** car pass per camper, vehicle must be parked within your camper space.

Mail, Phone (815-369-2240), or **EMAIL** camping@wachlin.com your registration before July 15, 2010.

Stoxen Ice Distribution and RV Trailer Parking
Attn: Pat Stoxen Wachlin
11584 W. Goddard Rd.
Lena, IL 61048



Friends of the Fair

The following friends and supporters of the Boone County Fair would like to congratulate the Boone County Fair Association and the Granges of Boone County for their community service!

T & J Market

Lyle & Patti Lee

Pat & Doug Skinner

John & Pat Henninger

Larry & Emalee Colver

*Katherine, Tracey &
Marilyn Blasingame*

*Jeremy, Sarah, Tyler, Sammie,
Beckie & Steven Meyers*

Steve & Dayle Paulson & family

Mundy's T & J Holsteins

*Jimmy & Ruth Blasingame
& the Grandstand
Ticket Office Staff*

Al & Darlene Henninger

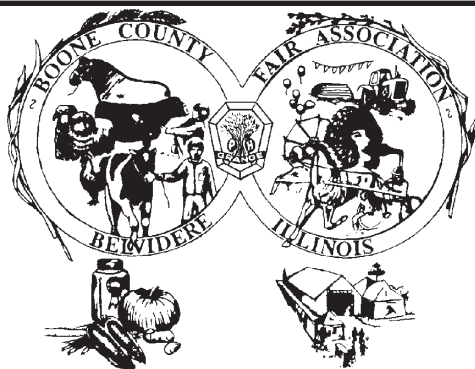
*Clint, Teri, Allie, Nichole
Henninger*

Jim & Sonja Olstad

*Shawn, Hillaire, Logan
Henninger*

*Turner Farms
Jim & Marilyn Turner*

Teri & Rock Keegan



Friends of the Fair

The following friends and supporters of the Boone County Fair would like to congratulate the Boone County Fair Association and the Granges of Boone County for their community service!

Bette Paulson & Family

*Dwayne, Mary Lou & Lane
& Lucas Manring*

Ellis & Dawn Mundy

Randy & Kerry Cloyd

Dave & Donna Manring

*SunnyBrook Farms
The Willis Family*

*Steve & Susan Banks-Price
& Family*

*Vince & Skyler Melillo
Reliable Horseshoeing*

*Jack & Laurel Ratcliffe &
Family*

Bev's Popcorn

Lisa, Samantha, Ally Frantzen

*Kim Hughes, Zayrian
& Zavyn Richards*

*The Morgan Family, George &
Harley*

*Springlake Farm
Dale & Marilyn Rhode*

Lori & Danielle Turner

National Code of Show Ring Ethics

Exhibitors of animals at livestock shows shall at all times deport themselves with honesty and good sportsmanship. Their conduct in this competitive environment shall always reflect the highest standards of honor and dignity to promote the advancement of agricultural education. This code applies to junior as well as open class exhibitors who compete in structured classes of competition. This code applies to all livestock offered in any event at a livestock show. In addition to the "IAFE National Code of Show Ring Ethics," fairs and livestock shows may have rules and regulations which they impose on the local, county, state, provincial and national levels.

All youth leaders working with junior exhibitors are under an affirmative responsibility to do more than avoid improper conduct or questionable acts. Their moral values must be so certain and positive that those younger and more pliable will be influenced by their fine example. Owners, exhibitors, fitters, trainers and absolutely responsible persons who violate the code of ethics will forfeit premiums, awards and auction proceeds and shall be prohibited from future exhibition in accordance with the rules adopted by the respective fairs and livestock shows. Exhibitors who violate this code of ethics demean the integrity of all livestock exhibitors and should be prohibited from competition at all livestock shows in the United States and Canada.

The following is a list of guidelines for all exhibitors and all livestock in competitive events:

1. All exhibitors must present, upon request of fair and livestock show officials, proof of ownership, length of ownership and age of all animals entered. Misrepresentation of ownership, age, or any facts relating thereto is prohibited.

2. Owners, exhibitors, fitters, trainers, or absolutely responsible persons shall provide animal health certificates from licensed veterinarians upon request by fair or livestock show officials.

3. Junior exhibitors are expected to care for and groom their animals while at fairs or livestock shows.

4. Animals shall be presented to show events where they will enter the food chain free of violative drug residues. The act of entering an animal in a livestock show is the giving of consent by the owner, exhibitor, fitter, trainer and/or absolutely responsible person for show management to obtain any specimens of urine, saliva, blood, or other substances from the animal to be used in testing. Animals not entered in an event which culminates with the animal entering the food chain shall not be administered drugs other than in accordance with applicable federal, state and provincial statutes, regulations and rules. Livestock shall not be exhibited if the drugs administered in accordance with federal, state and provincial statutes, regulations and rules affect the animal's performance or appearance at the event.

If the laboratory report on the analysis of saliva, urine, blood, or other sample taken from livestock indicates the presence of forbidden drugs or medication, this shall be prima facie evidence such substance has been administered to the animal either internally or externally. It is presumed that the sample of urine, saliva, blood, or other substance tested by the laboratory to which it is sent is the one taken from the animal in question, its integrity is preserved and all procedures of said collection and preservation, transfer to the laboratory and analysis of the sample are correct and accurate and the report received from the laboratory pertains to the sample taken from the animal in question and correctly reflects the condition of the animal at the time the sample was taken, with the burden on the owner, exhibitor, fitter, trainer, or absolutely responsible person to prove otherwise.

At any time after an animal arrives on the fair or livestock show premises, all treatments involving the use of drugs and/or medications for the sole purpose of protecting the health of the animal shall be administered by a licensed veterinarian.

5. Any surgical procedure or injection of any foreign substance or drug or the external application of any substance (irritant, counterirritant, or simi-

lar substance) which could affect the animal's performance or alter its natural contour, confirmation, or appearance, except external applications of substances to the hoofs or horns of animals which affect appearances only and except for surgical procedures performed by a duly licensed veterinarian for the sole purpose of protecting the health of the animal, is prohibited.

6. The use of showing and/or handling practices or devices such as striking animals to cause swelling, using electrical contrivance, or other similar practice are not acceptable and are prohibited.

7. Direct criticism or interference with the judge, fair or livestock show management, other exhibitors, breed representatives, or show officials before, during, or after the competitive event is prohibited. In the furtherance of their official duty, all judges, fair and livestock show management, or other show officials shall be treated with courtesy, cooperation and respect and no person shall direct abusive or threatening conduct toward them.

8. No owner, exhibitor, fitter, trainer, or absolutely responsible person shall conspire with another person or persons to intentionally violate this code of ethics or knowingly contribute or cooperate with another person or persons either by affirmative action or inaction to violate this code of ethics. Violation of this rule shall subject such individual to disciplinary action.

9. The application of this code of ethics provides for absolute responsibility for an animal's condition by an owner, exhibitor, fitter, trainer, or participant whether or not he or she was actually instrumental in or had actual knowledge of the treatment of the animal in contravention of this code of ethics.

10. The act of entering an animal is the giving of consent by the owner, exhibitor, fitter, trainer, or absolutely responsible person to have disciplinary action taken by the fair or livestock show for violation of this Code of Show Ring Ethics and any other rules of competition of the fair or livestock show without recourse against the fair or livestock show. The act of entering an animal is the giving of consent that any proceedings or disciplinary action taken by the fair or livestock show may be published with the name of the violator or violators in any publication of the International Association of Fairs and Expositions, including *Fairs and Expositions* and any special notice to members.

11. The act of entering of an animal in a fair or livestock show is the giving of verification by the owner, exhibitor, fitter, trainer, or absolutely responsible person that he or she has read the IAFE National Code of Show Ring Ethics and understands the consequences of and penalties provided for actions prohibited by the code. It is further a consent that any action which contravenes these rules and is also in violation of federal, state, or provincial statutes, regulations, or rules may be released to appropriate law enforcement authorities with jurisdiction over such infractions.

Floyd Anderson

815-544-9265



**FLOYD'S ANTIQUE
TRACTORS**

Search & Rescue of Antique Tractors

1001 Columbia Ave.

Belvidere, IL 61008

ENTRY BLANK-LIVESTOCK

Boone County Fair, Belvidere, Illinois

Exhibitor's Name _____ Date _____
 Address _____ Telephone _____
 City _____ State _____ Zip _____ Check if New Address If under 19, age as of 9/1/09 _____

Livestock exhibitors see Catalog for fees, stall/pen rent.

NUMBER OF ANIMALS ENTERED:

List number of stalls needed:

- # _____ Cattle Stalls (\$4.00) = \$ _____
- # _____ Pony Stalls (Single \$5.00) = \$ _____
- # _____ Pony Stalls (Double \$10.00) = \$ _____
- # _____ Sheep Pens (\$4.00) = \$ _____
- # _____ Hog Pens (\$2.00/Head) = \$ _____
- # _____ Administration Fee = \$ 3.00

- Number of Cattle _____
- Number of Ponies _____
- Number of Sheep _____
- Number of Hogs _____

**EXHIBITOR'S
NUMBER**

I am a member of: Boone County 4H? Yes No
 If Boone County 4-H Member, What Club? _____

TOTAL ENTRIES _____ \$ _____

EXHIBITOR'S TICKETS—MAX 2 (\$12.00) \$ _____
 includes 4-H

SEASON TICKET (\$15.00) S _____

TOTAL AMOUNT ENCLOSED: CASH _____ CHECK _____

Mail to: **Susan Banks-Price, 7320 West Ridge Lane, Cherry Valley, IL 61016 815-871-1060**
 Makes Checks payable to: **Boone County Fair Association**

PREMISE ID REQUIRED FOR SWINE

<http://www.agr.state.il.us/premiseid>

**IF YOU ARE ENTERING IN MORE THAN ONE DEPT. PLEASE USE ONE ENTRY BLANK FOR EACH DEPT.
AND ONE EXHIBITOR FOR EACH ENTRY BLANK**

| DEPT. | BREED | PREM. NO. | DESCRIPTION OF ANIMAL (USE WORDING OF PREMIUM LIST) | ENTRY FEE |
|--|-------|-----------|--|-----------|
| Only one Dept. to be listed on this sheet. | | | | |
| | | | | |
| | | | | |
| | | | | |
| | | | | |
| | | | | |
| | | | | |
| | | | | |
| | | | | |
| | | | | |

I have read and understand, and in consideration for being permitted to exhibit at this event, agree and consent to abide by the rules of competition, including the IAFE (International Association of Fairs and Expositions) National Code of Show Ring Ethics as stated in the premium list of this event.

If you need more space use back of this sheet or use 8½ x 11" plain paper and attach

TOTAL ENTRY FEES _____

ANIMALS WILL NOT BE RELEASED UNTIL 4 P.M. SUNDAY

ENTRY BLANK-LIVESTOCK

Boone County Fair, Belvidere, Illinois

Exhibitor's Name _____ Date _____
 Address _____ Telephone _____
 City _____ State _____ Zip _____ Check if New Address If under 19, age as of 9/1/09 _____

Livestock exhibitors see Catalog for fees, stall/pen rent.

List number of stalls needed:

- # _____ Cattle Stalls (\$4.00) = \$ _____
- # _____ Pony Stalls (Single \$5.00) = \$ _____
- # _____ Pony Stalls (Double \$10.00) = \$ _____
- # _____ Sheep Pens (\$4.00) = \$ _____
- # _____ Hog Pens (\$2.00/Head) = \$ _____
- # _____ Administration Fee = \$ 3.00

TOTAL ENTRIES _____ \$ _____

EXHIBITOR'S TICKETS-MAX 2 (\$12.00) \$ _____
 includes 4-H

SEASON TICKET (\$15.00) \$ _____

TOTAL AMOUNT ENCLOSED: CASH _____ CHECK _____

Mail to: **Susan Banks-Price, 7320 West Ridge Lane, Cherry Valley, IL 61016 815-871-1060**
 Makes Checks payable to: **Boone County Fair Association**

NUMBER OF ANIMALS ENTERED:

- Number of Cattle _____
- Number of Ponies _____
- Number of Sheep _____
- Number of Hogs _____

**EXHIBITOR'S
NUMBER**

I am a member of: Boone County 4H? Yes No
 If Boone County 4-H Member, What Club? _____

PREMISE ID REQUIRED FOR SWINE

<http://www.agr.state.il.us/premiseid>

**IF YOU ARE ENTERING IN MORE THAN ONE DEPT. PLEASE USE ONE ENTRY BLANK FOR EACH DEPT.
 AND ONE EXHIBITOR FOR EACH ENTRY BLANK**

| DEPT. | BREED | PREM. NO. | DESCRIPTION OF ANIMAL (USE WORDING OF PREMIUM LIST) | ENTRY FEE |
|--|-------|-----------|--|-----------|
| Only one Dept. to be listed on this sheet. | | | | |
| | | | | |
| | | | | |
| | | | | |
| | | | | |
| | | | | |
| | | | | |
| | | | | |
| | | | | |
| | | | | |

I have read and understand, and in consideration for being permitted to exhibit at this event, agree and consent to abide by the rules of competition, including the IAFE (International Association of Fairs and Expositions) National Code of Show Ring Ethics as stated in the premium list of this event.

If you need more space use back of this sheet or use 8 1/2 x 11" plain paper and attach

TOTAL ENTRY FEES _____

ANIMALS WILL NOT BE RELEASED UNTIL 4 P.M. SUNDAY

ENTRY BLANK – NON-LIVESTOCK

Boone County Fair, Belvidere, Illinois

Exhibitor's Name _____ Date _____
 Address _____ Telephone _____
 City _____ State _____ Zip _____ Check if New Address If under 19, age as of 9/1/09 _____

Administration Fee (1 time fee) = \$ 1.00

TOTAL ENTRIES _____ \$ _____

EXHIBITOR'S TICKETS—MAX 1 (\$12.00) \$ _____
 includes 4-H

SEASON TICKET (\$15.00) S _____

TOTAL AMOUNT ENCLOSED: CASH _____ CHECK _____

Mail to: **Susan Banks-Price, 7320 West Ridge Lane,
 Cherry Valley, IL 61016 815-871-1060**

Makes Checks payable to: **Boone County Fair Association**

I am a member of: Boone County 4H? Yes No

If Boone County 4-H Member, What Club? _____

**NUMBER OF ARTICLES
 ENTERED:**

- Number of J _____
- Number of K _____
- Number of L _____
- Number of M _____
- Number of M-1 _____
- Number of M-2 _____
- Number of M-3 _____
- Number of M-4 _____
- Number of N _____
- Number of O _____
- Number of P _____
- Number of Q _____

**EXHIBITOR'S
 NUMBER**

**IF YOU ARE ENTERING IN MORE THAN ONE DEPT. PLEASE USE ONE ENTRY BLANK FOR EACH DEPT.
 AND ONE EXHIBITOR FOR EACH ENTRY BLANK**

| DEPT. | PREM. NO. | DESCRIPTION OF ARTICLE (USE WORDING OF PREMIUM LIST) | ENTRY FEE |
|---|-----------|---|-----------|
| Only one Dept. to be listed on this sheet. | | | |
| | | | |
| | | | |
| | | | |
| | | | |
| | | | |
| | | | |
| | | | |
| | | | |
| | | | |

I have read and understand, and in consideration for being permitted to exhibit at this event, agree and consent to abide by the rules of competition, including the IAFE (International Association of Fairs and Expositions) National Code of Show Ring Ethics as stated in the premium list of this event.

If you need more space use back of this sheet or use 8 1/2 x 11" plain paper and attach

TOTAL ENTRY FEES

Exhibit to be picked up on Sunday not before 4:00 p.m. and not later than 6:30 p.m. and must be checked out with Superintendent or her assistant before removing from the building.

ENTRY BLANK – NON-LIVESTOCK

Boone County Fair, Belvidere, Illinois

Exhibitor's Name _____ Date _____
 Address _____ Telephone _____
 City _____ State _____ Zip _____ Check if New Address If under 19, age as of 9/1/09 _____

Administration Fee (1 time fee) = \$ 1.00

TOTAL ENTRIES _____ \$ _____

EXHIBITOR'S TICKETS—MAX 1 (\$12.00) \$ _____
 includes 4-H

SEASON TICKET (\$15.00) S _____

TOTAL AMOUNT ENCLOSED: CASH _____ CHECK _____

Mail to: **Susan Banks-Price, 7320 West Ridge Lane,
 Cherry Valley, IL 61016 815-871-1060**

Makes Checks payable to: **Boone County Fair Association**

I am a member of: Boone County 4H? Yes No

If Boone County 4-H Member, What Club? _____

**NUMBER OF ARTICLES
 ENTERED:**

- Number of J _____
- Number of K _____
- Number of L _____
- Number of M _____
- Number of M-1 _____
- Number of M-2 _____
- Number of M-3 _____
- Number of M-4 _____
- Number of N _____
- Number of O _____
- Number of P _____
- Number of Q _____

**EXHIBITOR'S
 NUMBER**

**IF YOU ARE ENTERING IN MORE THAN ONE DEPT. PLEASE USE ONE ENTRY BLANK FOR EACH DEPT.
 AND ONE EXHIBITOR FOR EACH ENTRY BLANK**

| DEPT. | PREM. NO. | DESCRIPTION OF ARTICLE (USE WORDING OF PREMIUM LIST) | ENTRY FEE |
|---|-----------|---|-----------|
| Only one Dept. to be listed on this sheet. | | | |
| | | | |
| | | | |
| | | | |
| | | | |
| | | | |
| | | | |
| | | | |
| | | | |
| | | | |

I have read and understand, and in consideration for being permitted to exhibit at this event, agree and consent to abide by the rules of competition, including the IAFE (International Association of Fairs and Expositions) National Code of Show Ring Ethics as stated in the premium list of this event.

If you need more space use back of this sheet or use 8 1/2 x 11" plain paper and attach

TOTAL ENTRY FEES

Exhibit to be picked up on Sunday not before 4:00 p.m. and not later than 6:30 p.m. and must be checked out with Superintendent or her assistant before removing from the building.



Tues. Aug 10th

12:00 - 3:00

Cal Starr & Lori Lee
Williams (Patsy Cline
Traditional Country
Music)

4:00 - 6:00

Music By Hallie

7:00 - 10:00 p.m.

Dale Rhode &
The Crossroads

Wed. Aug 11th

7:00 - 10:00 p.m.

Vintage Vinyl
(50's 60's music)

Thurs. Aug 12th

12:00 - 3:00 p.m.

Golden Aires Chorus

5:00 - 10:00 p.m.

George James
Entertains



**Entertainment
Building
2010 Music
Specials**

Fri. Aug 13th

12:00 - 1:00 p.m.

Jacqueline's School of Dance

1:30 - 3:30 p.m.

Joyce Leonard,
Michigan's Yodeling Sweetheart

4:00 - 6:00 p.m.

Crossroads Spiritual Band

7:00 - 10:00 p.m.

Silver Creek Band

Sat. Aug 14th

7:00 - 10:00 p.m.

Missing Links

Sun. Aug 15th

9:00 - 10:00 a.m.

Church Service,
Conducted by
Gideon's
International

6:00 - 9:00 p.m.

Skippin-A-Beat



*SOMETHING
TO SUIT
EVERY
TASTE,
YOUNG
AND OLD!*

**THE BOONE COUNTY FAIR ENTERTAINMENT BLDG. 2010
A NEW MILLENNIUM OF GREAT SHOWS!**

ATTENTION! ALL LIVESTOCK AND ANTIQUE TRACTOR EXHIBITORS

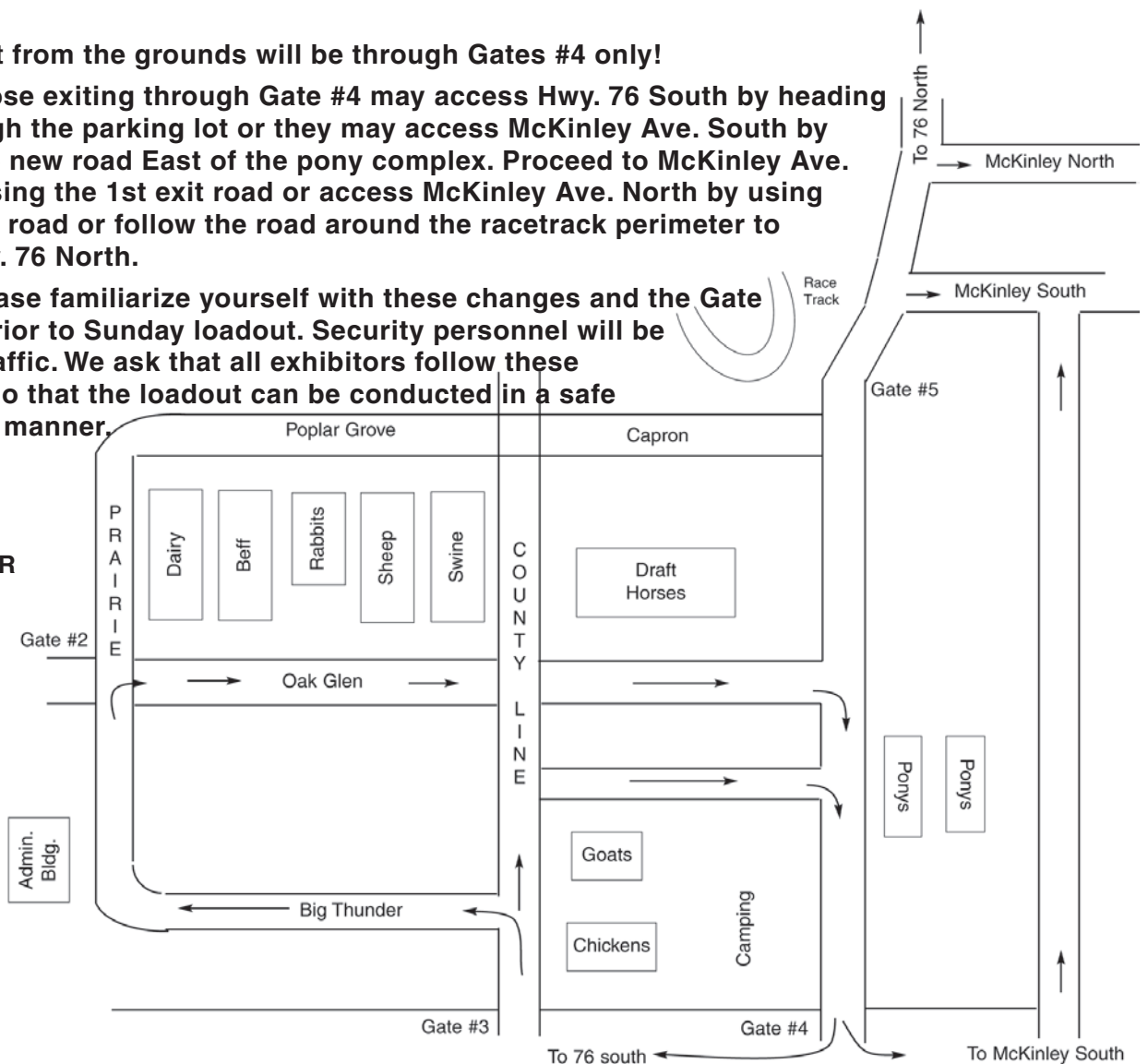
The Boone County Fairboard will be doing the
Sunday 4:00 p.m. Load Out for this year as follows:

1. No vehicles will be allowed at or around the barns between 10:00 a.m. and 4:00 p.m.
2. All vehicles are to enter the grounds through Gate #3 as has been done in previous years.
3. No vehicles will be allowed to exit through Gate #3 until it has been determined by security that it is safe to do so.
4. Those exhibitors wishing to walk livestock out to be loaded in the parking lot may do so through Gates #3 and #4.
5. Antique Tractor Exhibitors who wish to load their tractors and equipment in the parking lot are to use the road on the North side of the Goat barn and proceed to Gate #4.
6. Upon entering the grounds, those exhibitors loading dairy and beef are to turn left onto Big Thunder Road and then proceed to their respective barns for loading. Those exhibitors going to the chicken, goat, swine, draft horse, pony, rabbits and sheep barns are to continue North on County Line Road to their respective barns.
7. All exhibitors will be expected to load out within 30 minutes once they have reached their barn.
8. Exit from the grounds will be through Gates #4 only!
9. Those exiting through Gate #4 may access Hwy. 76 South by heading West through the parking lot or they may access McKinley Ave. South by utilizing the new road East of the pony complex. Proceed to McKinley Ave. South by using the 1st exit road or access McKinley Ave. North by using the 2nd exit road or follow the road around the racetrack perimeter to access Hwy. 76 North.

10. Please familiarize yourself with these changes and the Gate locations prior to Sunday loadout. Security personnel will be directing traffic. We ask that all exhibitors follow these directions so that the loadout can be conducted in a safe and orderly manner.

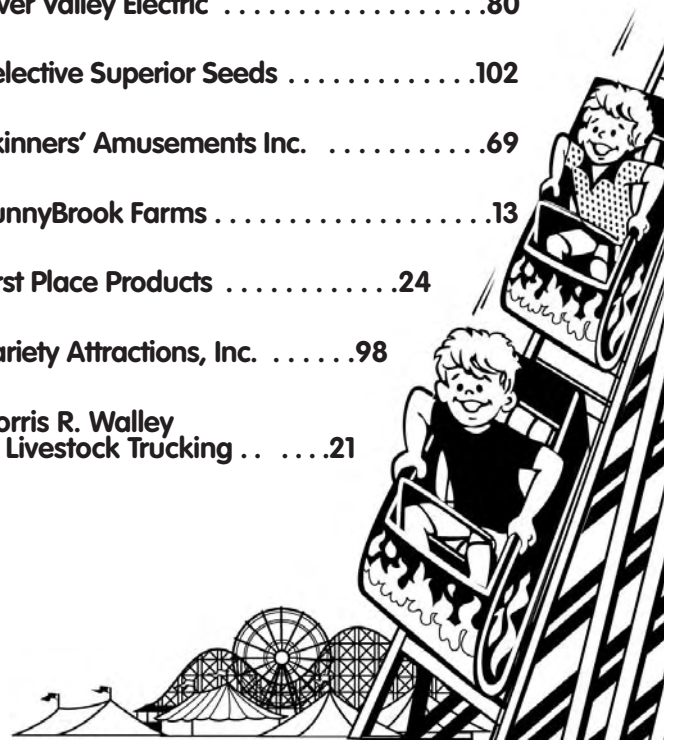
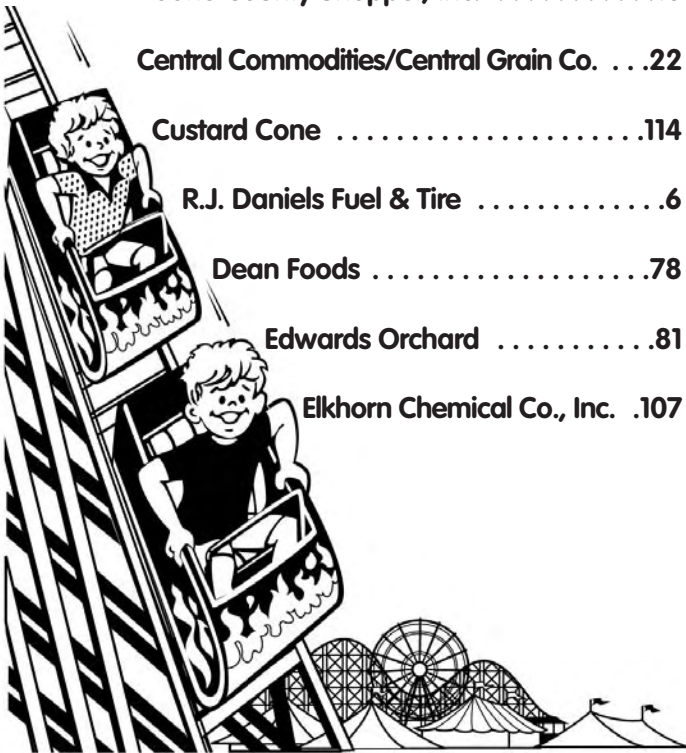
THANK YOU

THE BOONE
COUNTY FAIR
BOARD



2010 Boone County Fair Advertisers' Index

| | |
|---|--|
| <p>4-H Ambassadors40</p> <p>4-H Federation64</p> <p>Alpine Bank50</p> <p>Antique Tractors/Antique Gas Engine Display18</p> <p>Aspen Sound57, 76</p> <p>Auto Race Promotions Inc.87</p> <p>Barry T's Modernistic Engravers15</p> <p>Beaver Valley Grange110</p> <p>Berg Industries, Inc.Back Cover</p> <p>Big Hat Rodeo63</p> <p>Boone County Farm Bureau42</p> <p>Boone County Fire District #223</p> <p>Boone County Shopper, Inc.10</p> <p>Central Commodities/Central Grain Co. ...22</p> <p>Custard Cone114</p> <p>R.J. Daniels Fuel & Tire6</p> <p>Dean Foods78</p> <p>Edwards Orchard81</p> <p>Elkhorn Chemical Co., Inc. .107</p> | <p>Ferguson Financial Group90</p> <p>Fleet Lift Truck Service3</p> <p>Floyd's Antique Tractors119</p> <p>Gallano Farms Ltd. & Gallano Trucking108</p> <p>Lake Bluff Village113</p> <p>Lee Auction Service24</p> <p>Leroy Grange37</p> <p>Paulson Ag Museum77</p> <p>Brad Peters/American Family Ins.19</p> <p>Poplar Grove State Bank45</p> <p>Prairie Grange132</p> <p>Prairie Riders Snowmobile Club ..Inside Back Cover</p> <p>River Valley Electric80</p> <p>Selective Superior Seeds102</p> <p>Skinners' Amusements Inc.69</p> <p>SunnyBrook Farms13</p> <p>First Place Products24</p> <p>Variety Attractions, Inc.98</p> <p>Norris R. Walley Livestock Trucking21</p> |
|---|--|



Come join Prairie Grange!

Why should your Family join?

- Lasting Friendships
- Family Environment
- Fun and Enjoyment
- Leadership Development
- Community Service
- Grassroots Legislative Action
- Opportunities to Make a Difference



Grange meetings, activities, and events always include a social aspect that has fellowship as a cornerstone. Members make friends in their community, their state, and across the nation. In the Grange it is easy to make friendships that last a lifetime. Grange, a fraternal, family oriented, community service organization.



PRAIRIE GRANGE COMMUNITY SERVICE

Annual projects

The Prairie Grange Consignment Auction

The National Dictionary Project - provides dictionary to every 3rd grade student in Boone County.

Courtesy Golf Cart Shuffles - during the Boone County Fair

Host of the Food Cart Frenzy - a fun way to help the Boone Co. Food Pantry

Hometown Christmas Tree

Sewing Projects for Maplecrest

And many other one time projects on a needed basis.

A Place for All Ages

The Grange is a place for children, teenagers and young adults to grow. Junior Grange membership is for children ages 5 - 14. Full Grange Membership begins at 14 years of age. Additional programs, including the Grange Youth Program, are available to develop the leadership skills and character for members of all ages. In the spirit of friendship, Grangers accomplish great things while having a great time. Our Meetings are designed to be enjoyable!

Prairie Grange meetings

are held the 3rd Monday of each month at 7 PM at the Boone County Community Grange Hall (located at the main drive of the fairgrounds on Rt. 76).

Contact:

John Henninger – President
815-547-7074

Ruth Blasingame – Vice President
815-260-9826