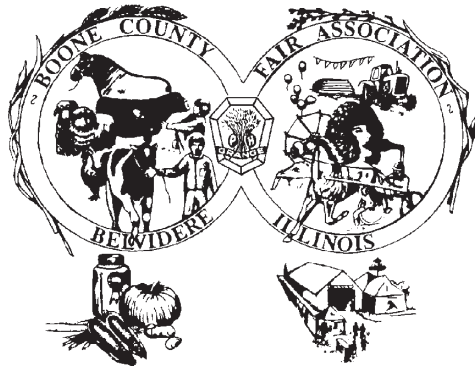


# Boone County Fair 2011

Owned and operated by the Granges of Boone County

## August 9-14, 2011

Boone County Fairgrounds Park  
Belvidere, Illinois



## TABLE OF CONTENTS

Program (Schedule of Events) & on center spread pages . . . .	2	Dept. M-3 – Amateur Photography . . . . .	99
Dept. A – Beef Cattle . . . . .	12	Dept. M-4 – Amateur Woodworking . . . . .	100
Dept. B – Dairy Cattle . . . . .	17	Dept. N – Art, Posters and Displays . . . . .	101
Dept. C – Draft Horses . . . . .	25	Dept. O – Amateur Culinary . . . . .	104
Gambler’s Choice . . . . .	29	Dept. P – Junior Dept., Youth Day . . . . .	107
Draft Horse Show Entry Blank . . . . .	31	Dept. Q – Tractor Pulling Contest . . . . .	111
Dept. F – Sheep . . . . .	35	Dept. Q – Illini State Pullers . . . . .	112
Dept. G – Swine . . . . .	38	Dept. Q – Super Farm Stock Tractor Pulling Contest . . . . .	113
Dept. H – Junior Show Dairy . . . . .	41	Dept. Q – Street Stock and Super Stock 4-Wheel Drive Trucks . . . . .	114
Dept. H – Junior Beef Dairy . . . . .	45	Dept. Q – Rock County Pullers . . . . .	114
Dept. H – Junior Steer Show . . . . .	46	Dept. Q – Garden Tractor Pulling Contest . . . . .	115
Dept. H – Junior Market Barrow Show . . . . .	46	Dept. Q – Pedal Pull Contest . . . . .	115
Dept. H – Junior Show – Sheep . . . . .	48	Dept. R – Pony Halter & Draft Harness Classes . . . . .	116
Junior Dairy Goat Show Entry Blank . . . . .	49	Dept. S – Harness Races . . . . .	120
Dept. H – Junior Dairy Goat Show . . . . .	51	Dept. U – Dairy Goats . . . . .	121
Dept. H – Junior Poultry Show . . . . .	53	National Code of Show Ring Ethics . . . . .	124
Junior Poultry Show Entry Blank . . . . .	55	Open Dairy Goat Show Entry Blank . . . . .	125
Dept. I – Poultry . . . . .	59	Entry Blanks . . . . .	127
Open Poultry Show Entry Blank . . . . .	61	Camper Pre-Registration . . . . .	135
Rabbit Show Entry Blank . . . . .	81	Friends of the Fair . . . . .	136
Dept. I – Rabbits . . . . .	85	Advertisers’ Index . . . . .	139
Dept. J – Agricultural Products . . . . .	89		
Dept. K – Fruits . . . . .	91		
Dept. L – Flowers and Plants “Amateur Only” . . . . .	92		
Dept. M – Amateur Textiles (Fabric) . . . . .	94		
Dept. M-1 – Adult Paintings and Drawings . . . . .	97		
Dept. M-2 – Amateur Ceramics, Scrapbooking & Jewelry . . . . .	98		

# 2011 PROGRAM

## BOONE COUNTY FAIR

Owned and operated by the Granges of Boone County

### BOONE COUNTY FAIRGROUNDS PARK

August 9th, 10th, 11th, 12th, 13th, and 14th, 2011

Since the program is printed weeks in advance of the Fair, the times stated are approximate and may be changed to fit the schedule. We will do our best to follow the program.

#### TUESDAY, August 9th

Merchant's Day: Free admission with Merchant's coupon until 4 pm  
Without coupon admission is \$4.00

Non-Livestock Bldg. Closed for Judging

- 7:30 a.m. . . . . **4-H Poultry Show** . . . . . Poultry Bldg.  
8:30 a.m. . . . . **4-H Horse Show** . . . . . Outdoor Horse Arena  
12:00 p.m. . . . . **Flag raising – VFW** . . . . . Grandstand  
12:00 p.m. . . . . **Harness and Colt Racing** . . . . . Grandstand (Free)  
12:00-2:00 p.m. . . . . **\*\*Music By Hallie\*\*** . . . . . Entertainment Bldg.  
(Country Bluegrass American originals Favorites)  
3:00-6:00 p.m. . . . . **\*\*Stampede Band\*\*** . . . . . Entertainment Bldg.  
6:45-7:15 p.m. . . . . **\*\*Kid Fiddlers\*\*** . . . . . Grandstand (Free)  
7:00-10:00 p.m. . . . . **\*\*Dale Rhode & the  
Crossroads\*\*** . . . . . Entertainment Bldg.  
7:30 p.m. . . . . **\*\*QUEEN PAGEANT\*\*** . . . . . Grandstand (Free)

(Sponsored by General Mills Green Giant)

#### WEDNESDAY, August 10th

Non-Livestock Bldg. opened from 10 a.m. - 9:30 p.m.

**Skinners Amusements – Reduced Rides Noon to 5:00 p.m.**

- 8:00 a.m. . . . . **Open Junior Show** . . . . . Poultry Bldg.  
8:00 a.m. . . . . **Open Rabbit Show** . . . . . Rabbit Show Room  
8:30 a.m. . . . . **4-H Carcass Show** . . . . . Swine Barn  
**4-H Purebred Swine Show** . . . . . Swine Barn  
(To start immediately following the Carcass Show)  
9:00 a.m. . . . . **4-H Sheep Show** . . . . . Sheep Arena  
9:00 a.m. . . . . **4-H Horse Show (Speed event  
and Trail Dressage)** . . . . . Pony Arena  
10:00 a.m. . . . . **Kids Day (Games & Contests)**. Gazebo/Memorial Park  
(Sponsored by Alpine Bank/Belvidere)  
12:00-5:00 p.m. . . . . **REDUCED CARNIVAL RIDES** . . . . . Midway  
12:00 p.m. . . . . **Harness and Colt Racing** . . . . . Grandstand (Free)  
12:00-3:00 p.m. . . . . **\*\*Chip Messiner\*\*** . . . . . Entertainment Bldg.

(One man country band) Q98.5

**Contests held during band breaks – Ages 15 and older  
Watermelon Eating/Seed Spitting/Bubblegum Blowing/  
Twinkie Eating/Pepsi Drinking**

**Prizes: 1st \$15.00, 2nd \$10.00, 3rd \$5.00, Each Contest  
Conducted by Arnie Pearse**

**Contestants must pay fair admission at the gate.**

- 1:00 p.m. . . . . **VIP Classes** . . . . . Dairy Arena  
3:00 p.m. . . . . **4-H Dairy Steer Show** . . . . . Livestock Arena  
3:00 p.m. . . . . **Pony Team Driving –  
Obstacle Course** . . . . . Outside Horse Arena  
4:00 p.m. . . . . **4-H Beef Carcass Show** . . . . . Livestock Arena  
4:00 p.m. . . . . **Mules Team Driving –  
Obstacle Course** . . . . . Outside Horse Arena

- 4:00-6:00 p.m. . . . . **\*\*Cal Starr and  
Lori Lee Williams\*\*** . . . . . Entertainment Bldg.  
(Patsy Cline Traditional Country Music)  
5:00 p.m. . . . . **Antique Tractor Parade** . . . . . Grandstand (Free)  
5:00 p.m. . . . . **Horses (Draft or Light) Team Driving –  
Obstacle Course** . . . . . Outside Horse Arena  
6:00 p.m. . . . . **4-H Rabbit Show** . . . . . Livestock Show Arena  
6:00 p.m. . . . . **Team Feed Race** . . . . . Outside Horse Arena  
7:00-10:00 p.m. . . . . **\*\*Southern Exposure\*\*** . . . . . Entertainment Bldg.  
7:00 p.m. . . . . **\*\*Boone County High School Band  
Competition\*\*** . . . . . Grandstand

#### THURSDAY, August 11th

Senior Citizens Day

Non-Livestock Bldg. open 10:00 a.m. - 9:30 p.m.

**Skinners Amusements – Reduced Rides 11:00 a.m.-5:00 p.m.**

- 8:00 a.m. . . . . **4-H Goat Show** . . . . . Goat Show Arena  
8:30 a.m. . . . . **4-H Crossbreed Swine Show** . . . . . Swine Barn  
9:00 a.m. . . . . **4-H Dairy Show** . . . . . Dairy Arena  
9:00 a.m. . . . . **4-H Beef Show** . . . . . Livestock Arena  
9:00 a.m. . . . . **Pony Classes** . . . . . Pony Arena  
10:00 a.m. . . . . **Kids Day (Games & Contests)**. Gazebo/Memorial Park  
(Sponsored by Alpine Bank/Belvidere)  
10:00 a.m. . . . . **Farm Tractor Pull** . . . . . Grandstand  
10:00 a.m. . . . . **Junior Sheep Show** . . . . . Sheep Barn  
11:00-5:00 p.m. . . . . **REDUCED CARNIVAL RIDES** . . . . . Midway  
11:30-2:00 p.m. . . . . **Gene Shepherd and Band** . . . . . On the Grounds  
12:00-3:00 p.m. . . . . **\*\*Golden Aires Chorus\*\*** . . . . . Entertainment Bldg.  
1:00 p.m. . . . . **Junior Dairy Goat Show** . . . . . Goat Show Arena  
2:00 p.m. . . . . **Local and Regional  
Tractor and Truck Pulls** . . . . . Grandstand  
*Super Farm Tractors, Altered Farm Tractors, Street Stock Trucks, Super Stock  
Trucks, Stock Diesel 4WD Trucks PLUS Tri-County Mini Rod Pull (Open Class)*

- 4:00 p.m. . . . . **Junior Draft Horse  
Performance Classes** . . . . . Outside Horse Arena  
5:00 p.m. . . . . **4-H Livestock Auction** . . . . . Livestock Arena  
5:00 - 10 p.m. . . . . **\*\*George James Entertains\*\*** . . . . . Entertainment Bldg.  
6:00 p.m. . . . . **Mother/Daughter  
Look Alike Contest** . . . . . Entertainment Bldg.

**Casual Wear – directed by George James**

**(Sign-up at 5:30 behind entertainment bldg – Judging at 6:00 p.m.)**

**Prizes awarded immediately following contest:**

**1st - \$25, 2nd - \$20, 3rd - \$15.**

**Contestants must pay fair admission to the fair at the gate.**

**Former first place winners not eligible!**

**(Mother/Daughter Contest Sponsored by Parnell Foods)**

6:30 p.m. .... **Pony Olympics** ..... Pony Arena  
 6:30 p.m. .... **\*\*TRACTOR AND TRUCK PULL\*\*** ..... Grandstand  
**Illini State Pullers - Numerous Tractor and 4X4 truck pulls and mod tractors including Semi Trucks.**  
 8:00 p.m. .... **Father/Son Look Alike Contest** . Entertainment Bldg.  
**Casual Wear – directed by George James**  
**(Sign up at 7:30 behind entertainment bldg – Judging at 8:00 p.m.)**  
**Prizes awarded immediately following contest:**  
**1st - \$25, 2nd - \$20, 3rd - \$15**  
**Contestants must pay fair admission to the fair at the gate.**  
**Former first place winners not eligible!**  
**(Father/Son Contest Sponsored by Parnell Foods)**

**FRIDAY, August 12th**

Non-Livestock Bldg. open 10:00 a.m. - 9:30 p.m.

8:00 a.m. .... **Dairy Goat – Open Class** ..... Goat Show Arena  
 8:30 a.m. .... **Junior Market Barrow Show** ..... Swine Barn  
 9:00 a.m. .... **Open Sheep Show** ..... Sheep Barn  
 9:00 a.m. .... **Draft Horse Halter Show** ..... Inside Horse Arena  
 9:00 a.m. .... **Open and Junior Beef Show Judging** ..... Livestock Arena  
 9:00 a.m. .... **Open and Junior Dairy Show (colored breeds)** ..... Dairy Show Arena  
 10:00 a.m. .... **Pony Halter & Performance Classes** ..... Pony Arena  
 12:00-1:00 p.m. .... **\*\*Jacqueline’s School of Dance\*\*** Entertainment Bldg.  
 1:30-3:30 p.m. .... **Joyce Leonard** ..... Entertainment Bldg.  
*(Michigan’s Yodeling Sweetheart)*  
 3:00 p.m. .... **Agility Dog Demonstration– Meyer’s Kennel** ..... Gazebo/Memorial Park  
 4:00-5:00 p.m. .... **\*\*Magic by Herb Rosene\*\*** ..... Entertainment Bldg.  
 4:30-7:00 p.m. .... **\*\*Gene Shepard Band\*\*** ..... On The Grounds  
 5:30-6:00 p.m. .... **Mary Lee’s School of Dance** ..... Entertainment Bldg.  
 6:00 p.m. .... **Agility Dog Demonstration– Meyer’s Kennel** ..... Gazebo/Memorial Park  
 6:30 p.m. .... **Open Wether Show** ..... Sheep Barn  
 7:00 - 10:00 p.m. .... **\*\*Silver Creek Band\*\*** ..... Entertainment Bldg.  
 7:30 p.m. .... **\*\*KELLIE PICKLER\*\*** ..... Grandstand

**SATURDAY, August 13th**

Non-Livestock Bldg. open 10:00 a.m. - 9:30 p.m.

8:00 a.m. .... **Garden Tractor & Weak End Antique Tractor Pulls** ..... Grandstand (Free)  
 9:00 a.m. .... **Open Sheep Show** ..... Sheep Barn  
 9:00 a.m. .... **Open and Junior Steer Judging** ..... Livestock Arena  
 9:00 a.m. .... **Open and Junior Dairy Judging (Holstein)** ..... Dairy Arena  
 9:00 a.m. .... **Pony Performance & Hitch Classes** ..... Pony Arena  
 9:30 a.m. .... **Talent Contest Sign-up** ..... Entertainment Bldg.  
 10:30 -3:30 p.m. .... **Talent Contest** ..... Entertainment Bldg.

**Open to all Amateur Talent**

**Talent Prizes: 1st - \$100, 2nd - \$75, 3rd - \$50**

**Contestants must pay admission to the fair at the gate.**

**Contact Chip Messiner, after Aug 1st, 815-877-9678**

**(Talent Contest Sponsored by Parnell Foods)**

Noon ..... **Draft Horse Hitch Classes** ..... Outside Horse Arena  
 1:00 p.m. .... **Pony Hitch Classes** ..... Pony Arena  
 3:00 p.m. .... **Supreme Grand Champ. Dairy Selected** . Dairy Arena  
 3:00 p.m. .... **Fur, Feather, and Wether Auction** ..... Livestock Arena  
 4:00-6:00 p.m. .... **\*\*The Karate Academy\*\*** ..... Entertainment Bldg.  
 6:00 P.M. .... **Lead Class** ..... Sheep Barn  
 4:30-7:00 p.m. .... **\*\*Gene Shephard Band\*\*** ..... On The Grounds  
 7:00-10:00 p.m. .... **\*\*Missing Links\*\*** ..... Entertainment Bldg.  
 7:00 p.m. .... **\*\*Next Level Pro-Bull Riding\*\*** ..... Grandstand  
*(Sanctioned with PBR Mutton Bustin and Barrel Racing)*  
**(Sponsored by: Gallano Trucking, Blackhawk Lawn & Power Equipment, Poplar Grove Feed, N.I.T.E. Equipment, Pepsi)**

**SUNDAY, August 14th**

Non-Livestock Bldg. open 10:00 a.m. - 4:00 p.m.

9:00-10:00 a.m. .... **\*\*Church Service\*\*** ..... Entertainment Bldg.  
*(Conducted by Gideon’s International)*  
 10:00 a.m. .... **Pedal Pushers Pull** ..... Livestock Arena  
*(Sponsored by A.R. Henninger Agency)*  
 10:00 a.m. .... **\*\*Northern Illinois Outlaws Cowboy Mounted Shoot\*\*** ..... Pony Arena  
 12:00 p.m. .... **Auction of Wood Carvings** ..... Near Schoolhouse  
 12:30-1:30 p.m. .... **\*\*Lip Sync Contest\*\*** ..... Entertainment Bldg.  
**Prizes: 1st - \$75, 2nd - \$50, 3rd - \$25**  
**Conducted by Arnie Pearse**  
**Contestants must pay admission to the fair at the gate.**  
 1:00 p.m. .... **\*\*DEMOLITION DERBY\*\*** ..... Grandstand  
*Pick-up Truck Heat and Special Pure Stock Class Car Heat are Part of this show. \$500.00 bonus to highest placing Boone County Resident in the Feature Race. Winner of Feature Race receives \$1,000.00*  
 1:30-3:00 p.m. .... **\*\*Karaoke Contest\*\*** ..... Entertainment Bldg.  
**Prizes: 1st - \$75, 2nd - \$50, 3rd - \$25**  
**Conducted by Arnie Pearse**  
**Contestants must pay admission to the fair at the gate.**  
 4:00-5:00 p.m. .... **\*\*East Lincoln Avenue Band\*\*** ..... Entertainment Bldg.  
 6:00 p.m. .... **\*\*DEMOLITION DERBY\*\*** ..... Grandstand  
 6:00-9:00 p.m. .... **\*\*BOONE BOYS 30 Year Anniversary Reunion\*\*** ..... Entertainment Bldg.  
*Mini Car Heat as Part of Show*  
*\$500.00 bonus to highest placing Boone County Resident in the Feature Race. Winner of Feature Race receives \$1,000.00.*

**Many thanks to Pepsi for their sponsorship.**

**Ray Boeke**  
Sales Representative



**New • Used • Rental • Operator Training**

5251 Irving Blvd., Machesney Park, IL 61115  
(815) 654-8080

## ADDITIONAL ATTRACTIONS

**Every Day** – Kid Fiddlers *On The Grounds*  
(Sponsored by Boone County Shopper)

**Every Day** – B&C Ranch (Adorable Animal Actors)  
(Sponsored by Byron Bank, Buck-Wheeler-Hyland,  
Wisc-Cheese)

**Every Day** – Nascar Simulator and Display, South Road  
(Sponsored by The Cosmopolitan Club-Belvidere,  
Temple's 5 Star, Jack Wolf Cadillac-GMC-Chrysler-Jeep-  
Dodge, and Mor-Agra Grain Handling)

**Every Day** – Galaxy Girl Events, South Road  
(Sponsored by Blackhawk Bank, Boone County Family  
Restaurant, Pacemaker Foods)

**Every Day** – Amazing Arthur – *On The Grounds*

**Thurs., Fri., and Sat.** – Dave Watson, Chainsaw Artist,  
near the Schoolhouse (Sponsored by Lee Auction  
Service)

**Daily** – Antique Tractor and Antique Gas Engines  
Display, South Road. *Recognizing 50th Anniversary of  
Cub Cadet!*

**Daily** – Skinners Amusement and Carnival,  
open at noon unless previously stated

**Daily** – Puddle Jumpers - *On The Grounds*

**Daily** – Wee Farm

**Daily** (10:00-6:00 p.m.) – One Room Schoolhouse

**Daily** (9:30 a.m. - 8:30 p.m.) – Boone County Granges  
Museum (old administration office, center of grounds)

**Fri., Sat., & Sunday** – Magic Mike, strolling the grounds

Food served by the **Granges in Boone County**: Creamed Ham & Noodles on Thursday, Fish on Friday, Charcoal Broiled Chicken on Saturday, and Charcoal Broiled Pork Chops on Sunday.

**TICKET SALES for Show Tickets – Opening ticket sales – Walk Ins Only, Saturday July 9th from 8 am - 4 pm. The main gate ticket office is located on Rt. 76 at Gate 1 of the Boone County Fairgrounds, Belvidere, IL.**

**PHONE IN TICKET SALES begin Sunday, July 10th from 7 am - 4 pm. Phone number 815-547-4503.**

**REGULAR TICKET OFFICE HOURS: Weekdays 10 am - 7 pm, Saturdays 9 am - 4 pm, Sundays 12 noon - 4 pm.**

**FAIR WEEK HOURS: Sunday, August 7th (8 am - 5 pm.); Monday, August 8th (8 am - 9 pm); Tuesday, August 9th (8 am - 9 pm).**

**BACK TICKET OFFICE HOURS: Tuesday - Closed; Wednesday & Thursday - 8 am to 9 pm; Friday - 4 pm to 9 pm; Saturday - 4 pm to 9 pm.**

Seats in the Grandstand may be reserved for every evening except Tuesday. Grandstand General Admission tickets may be obtained for the Wednesday's evening show and Thursday 10 am show.

Phone requests will be taken starting July 10th at 815-547-4503. Email requests to [bcfairtickets@yahoo.com](mailto:bcfairtickets@yahoo.com) will begin July 10th also but must be confirmed with a phone call to 815-547-4503. Tickets requests may be made by writing: **Boone County Fair Tickets, P.O. Box 456, Belvidere, IL 61008.**

## The One-Room Schoolhouse



**Open Daily  
10:00 a.m. - 6:00 p.m.**

## TICKET PRICES FOR 2011

Tuesday	<b>Queen Pageant</b> 7:30 p.m.	Free	
Wednesday	<b>Boone County High School Band Show</b>		General Bleachers
Thursday	<b>Tractor Pulls</b> 10 a.m. - 6 p.m.	\$ 5.00	General
Thursday	<b>Truck, Tractor and Semi Pulls</b> 6:30 p.m.	\$ 7.00 \$ 5.00	Grandstand Bleachers
Friday	<b>KELLIE PICKLER</b> 7:30 p.m.	\$15.00 \$10.00	Grandstand and Track Bleachers
Saturday	<b>Next Level Pro-Bull Riding</b> 7:00 p.m.	\$10.00 \$ 6.00	Grandstand Bleachers
Sunday	<b>Demolition Derby</b> 1:00 and 6:00 p.m. Both Shows	\$10.00 \$ 6.00	Grandstand ea. Bleachers ea.

**NOTICE TO EXHIBITORS**

Exhibitor's Tickets .....	\$12.00
Daily Admission	
Tuesday .....	\$4.00
Wednesday-Sunday .....	\$5.00
Season Tickets, advance sale .....	\$15.00
Season Tickets, at the gate .....	\$17.00
Children 10 & under – FREE	
Day Pass Pack .....	.50 for \$175 ..... .25 for \$100

**There shall be a limit of two exhibitor tickets per exhibitor EXCEPT nonlivestock. Exhibitor tickets include 4-H.**

**IN NONLIVESTOCK CLASSES EACH EXHIBITOR SHALL BE LIMITED TO ONE EXHIBITOR'S TICKET, 4-H PASS.**

ENTRIES MUST BE MADE WITH ONLY ONE EXHIBITOR AND ONE DEPARTMENT FOR EACH ENTRY BLANK. IF MORE BLANKS ARE NEEDED PLEASE USE A PLAIN SHEET OF PAPER TO MAKE ENTRIES, OR MAKE A COPY OF THE ENTRY BLANK FORM FOR EACH ADDITIONAL ENTRY BLANK YOU NEED.

ENTRIES MADE WITH MORE THAN ONE EXHIBITOR OR MORE THAN ONE DEPARTMENT PER ENTRY BLANK MAY BE REFUSED BY THE SECRETARY.

We welcome your suggestions and criticism, providing they are constructive, as to how we can improve the fair or help us to make this the greatest county fair in the area. We personally invite you to come to the Boone County Fair either as an exhibitor or as a spectator and we'll do our best to make your visit a pleasant one, and we promise fair treatment to everyone.

All premium checks **MUST** be picked up on Sunday, August 15th. **No checks will be mailed out.** Be sure and sign your premium statement. No checks will be issued without your signature on the premium statement.

**All Livestock Exhibitors, ages 11 & older, must purchase one Exhibitor's ticket when entry is made.**

The gates will close at 12:00 midnight. No one will be allowed on the fairgrounds after closing, without a valid BCF pass. Violators will be subject to prosecution.

**CANCELLATION**

The Board of Directors reserves the right to cancel any and all events and premiums in case of a calamity, storms, or any unavoidable circumstances which make such action advisable in the opinion of the Directors.

**RULES AND REGULATIONS**

1. Superintendents of Classes, under direction of the Officers of the Fair, and awarding committee will take charge, arrange, and schedule all classes, animals and articles entered for exhibit, and will assist Judges and attach ribbons designating awards, namely first, blue ribbon; second, red ribbon. They will personally, and in writing, report awards to the Secretary.

2. The Secretary's books will be open to receive mailed entries at any time, but mailed entries **must be postmarked before midnight, Saturday, July 17th.** Send entries to **Susan Banks-Price, 7320 West Ridge Lane, Cherry Valley, IL 61016, any questions please call Susan at 815-871-1060,** except where specified.

For those wishing to make entries in person, the entries will be taken in the New Administration Bldg., on the fairgrounds, and will be open on Saturday, July 24th from 9:00 a.m. to 5:00 p.m., and also Sunday, July 25th from 9:00 a.m. to 5:00 p.m.

3. All animals entered for premiums must be on the grounds by 4:00 p.m. (DST) Thursday, August 12th, and all Swine must be in

by 6:00 p.m. Wednesday, August 11th.

4. In case of articles or livestock not worthy to compete for premiums, and entered for the purpose of shelter and care, the Association will assess a fee of \$5.00 per head per day for each animal entered, and \$1.00 per day for each article. The decision as to merits of any animal or article in question shall be put up to the Superintendent and Judge of the Division in which such are entered.

5. No article or animal entered for exhibition shall be loaded or removed from the ground before **4:00 p.m. (DST)** on the last day of the Fair. **Failure to adhere to this rule will mean forfeiture of premium money.**

6. Exhibitors or agents causing or making any false statement regarding animals or articles entered for competition, or interfering with the Judge or Superintendent shall be excluded from competition and whatever premiums awarded shall be forfeited to the Association. Protests must be made in writing.

7. Exhibitors must attend to delivering their animals or articles to the grounds, and all entries must be made by the bonafide owner or agent.

**8. The exhibitor is responsible for the care and feeding of their animals and for keeping their pens reasonably clean for as long as the animal is on the fairgrounds. Failure to do so would result in forfeiture of their premiums.**

**9. The Department Superintendent would report any violations to the Supt. of Livestock and it would be their responsibility to enforce the rules.**

10. No animal or article will be permitted to compete for more than one class except as one of a herd, pair, team, or group.

**Every exhibit regardless of class, must be entered with the Secretary, and Exhibitor's tag MUST be worn in the show ring.**

**11. Exhibitors are recommended to have a Premise ID from their home state.** Information about Premise ID can be found on their website: [www.agr.state.il.us/premiseid](http://www.agr.state.il.us/premiseid) or by calling 1-866-299-9256 for a paper form. Registration is free.

---

Exhibitors Having Lifetime Passes  
Do NOT Have To Buy An Exhibitor's Ticket

---

12. Members of immediate family ONLY may combine entries to show in group class. OPEN SHOW ONLY. Exhibitors may NOT combine animals from different owners for a group unless they are from the same family or are leased. Forfeiture of premiums for any violation will result.

13. Entry fees will be found listed at the top of each classification. No article or animal upon which entry is not paid in advance will be permitted to enter into competition.

14. No pens or stalls can or will be reserved for exhibitors except by and through the Superintendent of each division and recorded with the Secretary.

15. Exhibits will be open to the world in both Open and Junior Show.

16. No person can act as one of the committee of awards or judge, where there is any interest, as owner, agent or exhibitor.

17. The sale of liquor and other intoxicants or the giving away of same upon the grounds is strictly prohibited. It is in violation of the state rules governing agricultural fairs and any person who is proven guilty of such offense will be prosecuted. This rule will be enforced as rigidly as possible by the local, county and state officers. Gambling is also barred and it will be the duty of the offi-

cers to also enforce this rule.

18. No sales of livestock or articles exhibited will be permitted at public auction, or sale, unless satisfactory arrangement is made with the management.

19. In case an animal or article is worthy to compete and there is no competition, first premium will be awarded on such worthy animal or article. No premium will be awarded or paid for any animal or article unworthy of competition, at the discretion of the Judge of awards of the department.

20. Any act of thievery or destruction of property will be prosecuted immediately and vigorously. The management will have on hand sufficient police and watchmen to prevent any act of this kind, if possible.

21. The indiscriminate distributing of handbills over the grounds from car to car and person to person is not permitted. It is contrary to the ordinances of Boone County in which part of the Fair Grounds is located and violators will be prosecuted. This however, does not apply to the handing out of literature and advertising matter by concessions and exhibitors to prospective customers.

22. No person aside from the Secretary is authorized to change, abrogate or interpret these rules and regulations, and if such is done, the management reserves the right to set aside such, and to decide any arguments or differences that may arise.

**23. NO PARKING IN OR AROUND BARNs OR TENTS. DESIGNATED PARKING FOR EXHIBITORS IS OUTSIDE THE GROUNDS. VIOLATORS TO THE ABOVE RULE WILL NOT BE ALLOWED TO SHOW AND WILL BE BANNED FROM FUTURE SHOWS. ALL VEHICLES MUST BE OFF THE GROUNDS BY 10:00 A.M.**

#### LIABILITY

24. The Association will not be liable for losses or damages beyond reasonable care, neither will it be liable for accidents.

25. The public in general is asked to take special notice of the rule that standing upon the race track or upon fences during races is prohibited, and that all police and other officers are ordered to prohibit same. There are many chances of accidents in violating this rule.

26. Every precaution will be taken for the safeguarding of animals and articles placed on exhibit, but the Association will not be responsible for any loss by fire, theft, or that otherwise might occur.

27. Neither the Association nor any of its officers or agents shall be liable for injury to any person or property having license or privilege to exhibit on the grounds, or to occupy any space thereon.

28. Association not responsible for errors or omissions in this book.

29. Neither this Association nor any of its officers or agents shall be liable for any damage, loss or injury to any person or property caused by the neglect or willful act of any person or their represen-

tative employees having license or privilege to exhibit or occupy space on said grounds, and all said licenses shall indemnify said Association, its officers and agents against any expense or liability.

30. Neither this Association nor any of its officers or agents shall be permitted to negotiate insurance to make any guarantee whatsoever against damage or loss. Property owners desiring insurance against fire, theft, or any hazard, must make their own arrangements therefore. No officer or employee has authority to suspend this rule.

31. Police will be stationed at various points on the grounds and the public is asked to conform to their requests as closely as possible. In the handling of crowds, there must be some order, and it is for such purpose of protection of the interests of all that this point is dwelt upon.

32. No premiums will be paid on Exhibits not listed in Premium List.

33. All animals must be registered in the name of the exhibitor, both in the Junior and open classes. Animals in the Junior Show must be the property of the exhibitor.

34. All protests in livestock division must be made before the judge makes the placings.

35. The decision of the judges will be final and no appeal will be considered. Exhibitors may be barred from competition for trying to influence or finding fault with the judges decision.

36. Any exhibitor attempting to interfere with the judges during their judging, will be promptly excluded from competition.

37. PROTEST: Any exhibitor lodging a protest must first deposit \$25.00 with the Secretary, which sum will be forfeited to the Boone County Fair Association if protest is not sustained. All protests must be made in writing, signed by the protester.

38. All protests in the livestock division must be made before the judge makes the placings. All those in the nonlivestock division must be lodged within six (6) hours after the building is open to the public.

39. Board reserves the right to limit the number of entries or reject any entries.

**40. REGISTRATION PAPERS OR COPIES THEREOF FOR ALL PUREBRED ANIMALS MUST BE CARRIED BY THE EXHIBITOR SO THEY CAN BE CHECKED BY THE LIVESTOCK SUPERINTENDENT OR AN AUTHORIZED REPRESENTATIVE OF THE BOONE COUNTY FAIR ASSOCIATION.**

**41. All Livestock exhibitors and concession people will receive one, and only one, windshield sticker. This means one sticker per family. Entries may be made in the name of other people, other than the owners, but REMEMBER ONLY ONE WINDSHIELD STICKER PER FAMILY.**

Windshield stickers MUST be stuck on windshield for admittance to grounds.

**There shall be a limit of two exhibitor tickets to livestock exhibitor-includes 4-H.** The reason windshield stickers are issued is to enable livestock people to bring feed and supplies to their animals. Please don't abuse the privilege.

42. A trophy will be awarded for the largest number of points to an individual, based on ribbons awarded in Dept. J, K, L, M, N, O & P. Blue ribbons, 5 points; red ribbons, 3 points; white ribbons, 2 points, pink ribbons, 1 point. In case of a tie the trophy will be awarded to the largest number of blue ribbons. Trophies awarded only 2 years in succession to the same exhibitor.

43. Two monies only will be paid where an exhibitor enters more than two animals in any one class.

44. The Superintendent of concessions reserves the right to allow/disallow any concession or commercial exhibit.

**GOODYEAR**  
"The Tire Pros"

**Simplicity**  
Lawn Equipment

## R.J. Daniels Fuel & Tire

8094 Fairgrounds Rd.  
Belvidere, Illinois 61008  
(815) 544-2118

**TORO**<sup>®</sup>

**COOPER TIRES**  
Car & Truck

**Illinois Department of Agriculture  
Bureau of Animal Health and Welfare  
State Fairgrounds, P.O. Box 19281  
Springfield, IL 62794-9281  
Phone (217) 782-4944**

## 2011 EXHIBITION LIVESTOCK HEALTH REQUIREMENTS COUNTY FAIRS

### GENERAL REQUIREMENTS

1. Exhibitors are required to familiarize themselves with all rules applicable to their exhibits.

2. All out-of-state animals shall require an entry permit. Permits are available 24 hours a day, seven days a week by calling (217) 782-4944.

3. All animals, except as noted, shall be accompanied by a Certificate of Veterinary Inspection (CVI) which shows that the animal meets all health requirements for the State of Illinois. CVI's shall be made available to Bureau of Animal Health Personnel on request.

CVI means a legible record made on an official form from the state of origin which has been issued, signed and dated by an accredited veterinarian and which shows the name and address of the animal's owner or exhibitor and the results of all required tests or vaccinations. A CVI shall list only one animal identification per line; shall be presented on the form on which it was initially issued; and shall not be corrected, changed or altered in any manner.

4. All animals shall be officially identified. The animal(s) official identification shall be recorded on the CVI.

5. If animals are from tuberculosis accredited, brucellosis certified, pseudorabies qualified, or brucellosis validated herds, the identifying herd number(s) along with the date of the last herd test(s) shall appear on the CVI.

6. CVI for out-of-state livestock shall be void thirty (30) days after issuance.

7. CVI for Illinois-origin livestock shall be void ninety (90) days after issuance.

8. All livestock shall be subject to examination upon entry to any Illinois fair or exhibition. Any animal showing evidence of infectious, contagious or communicable diseases shall be immediately withdrawn and held in quarantine at the owner's risk and expense until properly treated and recovered, or until the animal is released to return to the owner's premise.

Any livestock infected with scabies, mange, active lesions of ringworm, soremouth, or multiple warts which are easily visible without close examination shall not be permitted to exhibit and are subject to quarantine or removal from the fairgrounds.

Sheep and goats with caseous lymphadenitis as evidenced by draining abscesses shall not be exhibited and are subject to immediate quarantine or removal from the fairgrounds.

9. **Illinois Department of Agriculture personnel or designee may collect blood, tissue, milk or urine samples from any animal being exhibited and/or raced at any Illinois fair to test for the presence of illegal drugs or banned substances.** New examination techniques, such as ultrasound, may also be used at anytime while the animals are on the grounds of any Illinois fair or exhibit.

**The Illinois Department of Agriculture or designee may collect urine, blood, tissue or other test samples from exhibition animals at the time of slaughter.**

10. All exhibitors of animals at any Illinois fair or exhibition shall comply with the provisions of the Illinois Humane Care for Animals Act. If violations are observed, the animal(s) will be excused from exhibition and ordered removed from the grounds with all awards being forfeited.

Any practice of deviation from normal accepted care, including physical, medical or mechanical application, shall constitute a violation of show rules and may result in the animal(s) disqualification and removal from the fairgrounds.

11. Any Illinois cattle, bison, cervidae or goats being exhibited in

non-accredited free states must be isolated from the remainder of the herd/flock upon return to Illinois and retested for tuberculosis 60-120 days post-entry.

### CATTLE

#### Identification

Individual identification of each animal shall be either a fully healed and legible tattoo, official metal ear tag, registration number (can only be used if the tattoo is recorded on the registration certificate or for breeds where pictures are acceptable), or individual brands, if brand is recorded on the registration certificate.

#### Illinois Cattle

**Brucellosis** – Illinois is a Bovine Brucellosis Class-Free State. Brucellosis testing is not required for Illinois cattle.

#### Tuberculosis

1. Illinois is an Accredited Tuberculosis-Free State. Tuberculin testing is not required for Illinois cattle.

**Please note: Illinois calves under 6 months of age, and Illinois steers are not required to have a Certificate of Veterinary Inspection.**

#### Out-of-State Cattle

##### Permit:

1. All out-of-state cattle are to be accompanied by an entry permit.
2. Permits are available 24 hours a day, seven days a week by calling (217) 782-4944.

##### Brucellosis:

1. Female cattle six (6) months of age and older and bulls eighteen (18) months of age and older shall be negative to an official test for brucellosis within thirty (30) days prior to entry, unless exempt by one (1) of the following:

- A. Originate directly from a certified brucellosis-free herd.
- B. Official vaccinates of dairy breeds under twenty (20) months of age or official vaccinates of beef breeds under twenty-four (24) months of age.

C. Animal originated from a "Class Free" state (if entire state is so classified).

D. Steers and spayed heifers are not required to be tested for brucellosis.

2. The negative brucellosis test shall be conducted at a state or federal laboratory within 30 days prior to exhibition.

##### Tuberculosis:

1. Accredited Tuberculosis Free States

A. No tuberculin test required. All cattle, including steers, originating from an Accredited Tuberculosis Free State, may enter Illinois for exhibition when accompanied by a CVI issued by an accredited veterinarian within 30 days.

2. Non-Accredited Tuberculosis Free Areas or States (Not TB Free)

A. Cattle must originate from a herd where a complete herd test was conducted within the past year.

B. The individual animals entering Illinois must be negative to an additional tuberculin test conducted **within 30 days prior to exhibition.**

C. Cattle that enter Illinois for exhibition and remain in Illinois (animal does not return to the state of origin within 30 days) must be isolated and retested for TB 60-120 days from the last official TB test date.

## SWINE

### Illinois Swine Identification

1. Swine shall be identified by an official ear tag, tattoo or recognized breed ear notch.
2. Ear notch identification is acceptable for barrows, crossbred gilts and breeding swine. (Note: Ear notch identification of crossbred swine does not satisfy USDA identification requirements for brucellosis and pseudorabies testing.)

#### Brucellosis

Brucellosis testing is not required for Illinois swine.

#### Pseudorabies:

**All exhibition swine are required to be tested for pseudorabies as described below.**

1. Swine of all ages shall be negative to an official test for pseudorabies conducted within 90 days prior to exhibition; or swine shall originate immediately and directly from a qualified pseudorabies negative herd.
2. Barrows and females in market classes must meet the same requirements as breeding swine.

#### Additional Requirements

1. Swine consigned to terminal market classes must meet the same test requirements as exhibition swine if these classes are held in conjunction with "exhibits not intended for slaughter."
2. When terminal classes are held on a day when no other livestock are present, these animals are exempt from all test requirements and do not need a CVI. All swine terminal classes must be identified by a site tattoo prior to movement to slaughter.
3. Swine from pseudorabies-quarantined herds are not allowed to exhibit regardless of whether or not the show is terminal or non-terminal.
4. The Illinois and DuQuoin State Fairs are not classified as terminal shows.

#### Out-of-State Swine Permit

1. All out-of-state swine are to be accompanied by an entry permit.
2. Permits are available 24 hours a day, seven days a week by calling (217) 782-4944.

#### Identification

1. Individually identified by an official ear tag, tattoo or recognized breed ear notch.
2. Ear notch identification **is not** acceptable for crossbred animals.

#### Brucellosis:

1. Breeding swine 4 months of age and older shall be negative to an official test for brucellosis within 30 days prior to exhibition unless exempt by one (1) of the following:
  - A. Originate immediately and directly from a brucellosis-free herd.
  - B. Originate directly from a validated brucellosis-free state.
2. Swine brucellosis tests for exhibition shall be conducted at a state or federal laboratory.

#### Pseudorabies:

**All exhibition swine are required to be tested for pseudorabies as described below.**

1. Swine shall be negative to an official test for pseudorabies conducted within the past thirty (30) days prior to entry or originate immediately and directly from a qualified pseudorabies negative herd.
2. Barrows and females in market classes must meet the same requirements as breeding swine.
3. The Illinois and DuQuoin State Fairs are not classified as terminal shows.

## SHEEP

### Identification

Individual identification of each animal shall be by an ear tattoo or official metal or plastic tag. A microchip ID is acceptable if the owner provides the reader.

**Ear tattoos may be used when a registration certificate, listing the tattoo number, accompanies the animal.**

**When using ear tags, the tag must indicate the premises ID**

**and state of origin. The tag number must be assigned by a state or APHIS representative and recorded in the Scrapie Record Database.**

#### Market Lambs

All wethers must be slick shorn (show ring ready) before weigh-in so that show lamb fungus can be identified.

#### Illinois Sheep

1. Sheep originating from a flock that has previously been classified as either an infected or source flock can be exhibited in Illinois upon the completion of an approved flock plan.
2. For any animal born after 1/1/2002, the CVI must include the flock of birth and the flock of origin, if different.

#### Out-of-State Sheep

1. All out-of-state sheep are to be accompanied by an entry permit. Permits are available 24 hours a day, seven days a week by calling (217) 782-4944.
2. Sheep originating from a flock that has previously been classified as either an infected or source flock can be exhibited in Illinois upon the completion of an approved flock plan.
3. For any animal born after 1/1/2002, the CVI must include the flock of birth and the flock of origin, if different.

## GOATS

### Identification

Individual identification of each animal shall be by an ear tattoo or official metal or plastic tag. A microchip ID is acceptable if the owner provides the reader.

**Tattoos may be used when a registration certificate, listing the tattoo number, accompanies the animal.**

**When using ear tags, the tag must indicate the premises ID and state of origin. The tag number must be assigned by a state or APHIS representative and recorded in the Scrapie Record Database.**

Ears should be used for tattooing when possible. If there is no space in the ear, the flank or tail fold may be used.

#### Illinois Goats

1. Goats originating from a herd that has previously been classified as either an infected or source herd can be exhibited in Illinois upon the completion of an approved herd plan.
2. For any animal born after 1/1/2002, the CVI must include the flock of birth and the flock of origin, if different.

#### Out-of-State Goats

1. All out-of-state goats are to be accompanied by an entry permit. Permits are available 24 hours a day, seven days a week by calling (217) 782-4944.
2. Goats originating from a herd that has previously been classified as either an infected or source herd can be exhibited in Illinois upon completion of an approved herd plan.
3. Tuberculosis—Goats from areas or states that are not Accredited Bovine Tuberculosis Free, must be accompanied by a CVI indicating that the goats originated from a herd where a complete negative herd test has been conducted within the past twelve (12) months and the individual animals are negative to a tuberculin test conducted within thirty (30) days prior to entry. For any animal born after 1/1/2002, the CVI must include the flock of birth and the flock of origin, if different.

## HORSES, PONIES, MULES AND OTHER EQUIDAE

### Illinois Equine

1. All horses and other equidae, twelve (12) months of age and older attending an advertised equine event, shall be accompanied by a negative test for equine infectious anemia (EIA) conducted within the last twelve (12) months. A copy of this test shall accompany the animal.
2. AGID (Coggins) or ELISA tests are accepted.
3. An advertised equine event means a show, rodeo, sale, auction, exhibition, trail ride, or horse fair that is posted or media promoted.
4. A CVI is not required for Illinois equine.

#### Out-of-State Equine

1. All out-of-state equine are to be accompanied by an entry permit. Permits are available 24 hours a day, seven days a week by calling (217) 782-4944.

2. All horses and other equidae entering Illinois that are twelve (12) months of age or older, shall be accompanied by a negative test for equine infectious anemia (EIA) conducted within the last twelve (12) months. A copy of this test shall accompany the animal.

3. AGID (Coggins) or ELISA tests are accepted.

4. All horses and other equidae shall be accompanied by a CVI issued within thirty (30) days prior to entry.

### POULTRY

1. All entries (except waterfowl, i.e., domesticated fowl that normally swim, such as ducks and geese) in a show or exhibition shall have originated from a U.S. Pullorum-Typhoid Clean or equivalent hatchery or flock OR have a negative pullorum-typhoid test within 90 days prior to exhibition. Exhibitor shall show proper information as to name and address of the owner or exhibitor, name and address of the authorized testing agent, date of the testing and the number, breed, and species of those tested.

2. Prior to being used to transport poultry to a show, all crates, boxes, containers and vehicles shall be thoroughly cleaned and disinfected.

3. Any poultry vaccinations must be performed at least 4 weeks prior to delivery to the show.

4. Upon admission to a show, all entries shall be examined by the official county fair veterinarian or qualified state personnel who shall also receive and examine all certificates necessary for admission of birds to a show. Birds not in show condition will be excused from exhibition and removed from the premises. Any fowl showing signs of illness during the fair will be removed from the exhibition grounds.

5. All out-of-state turkeys must originate from flocks that are officially classified as U.S. Mycoplasma Gallisepticum Clean in accordance with the provisions of the National Poultry Improvement Plan or be negative to a test for Mycoplasma gallisepticum within 30 days prior to entry.

6. A permit is also required for out-of-state poultry. A permit may be obtained by calling (217) 782-4944.

**Please note: These poultry exhibition requirements do not apply to 4-H and FFA 1-day poultry shows where the entries are taken to the show and returned home the same day. However, a permit is required for out-of-state poultry.**

### CERVIDAE

**(Deer, Elk, Reindeer, Caribou, Moose, Red Deer, and Other Related Species)**

#### Identification

All animals shall be individually identified with an approved tag, microchip or tattoo. Elk are required to have two official/approved unique identifiers.

#### Illinois Cervidae

##### Chronic Wasting Disease

For cervidae changing ownership or moving within the State, the owner must obtain a permit issued by the Department prior to movement and the cervid must originate from a herd that is enrolled in the Certified Monitored Chronic Wasting Disease (CWD) Program or the Contained Monitored Chronic Wasting Disease Program. The permit shall be obtained no more than 72 hours in advance of the movement of the cervids by providing the following information:

A) Name and complete mailing address of person exhibiting the cervids;

B) Certified Monitored Chronic Wasting Disease or Contained Monitored Chronic Wasting Disease Herd number;

C) Name and complete mailing address of location where the animals will be exhibited;

D) Number of animals and unique identification of the animals.

#### Tuberculosis

Illinois is an Accredited Tuberculosis-Free State. Tuberculin test is not required for Illinois cervidae.

#### Out-of-State Cervidae

##### Chronic Wasting Disease

1. All cervidae entering Illinois must be in compliance with the

Illinois Wildlife Code [520 ILCS 5]. For more information, contact the Illinois Department of Natural Resources at (217) 782-6384.

2. All cervidae entering Illinois must be accompanied by a permit from the Department and a Certificate of Veterinary Inspection that:

a. has been issued by an accredited veterinarian of the state of origin or a veterinarian in the employ of the United States Department of Agriculture;

b. is approved by the Animal Health Official of the state of origin;

c. shows that the cervidae are free from visible evidence of any contagious, infectious or communicable disease or exposure thereto, do not originate from a CWD endemic area (any county and surrounding counties where CWD has been diagnosed in the past five years);

d. shows that the cervidae are not originating from a herd under quarantine for any contagious, infectious or communicable disease;

e. shows that the animals originate from a herd that has been monitored for at least 5 years under a state-approved CWD certification program.

3. A permit number can be obtained by calling (217) 782-4944. Applicant for permit shall furnish the following information to the Department:

a. Name and post office mailing address of Illinois destination;

b. Name and post office mailing address of the consignor and/or source herds;

c. Name and post office mailing address of the herd veterinarian;

d. Number and unique identification of cervidae in shipment.

#### Brucellosis:

Cervidae six (6) months of age and older must have a negative brucellosis card or PCFIA test within sixty (60) days prior to entry.

#### Tuberculosis:

##### 1. Accredited Tuberculosis Free States

All cervidae twelve (12) months of age and over shall be negative to two (2) single cervical test for bovine TB no less than ninety (90) days apart with the second test conducted within ninety (90) days prior to entry. These animals shall be isolated from all other members of the herd during the testing period unless they originate from an accredited, qualified or monitored herd.

A. Cervidae from an accredited herd may be moved into Illinois without further TB testing provided that a certificate stating that such cervids originated from an accredited herd companies them.

B. Cervidae originating from qualified or monitored herds may enter with a negative test within ninety (90) days prior to entry and a certificate stating that the animals originate from a monitored herd.

##### 2. Non-Accredited Tuberculosis Free Areas or States (Not TB Free)

A. All cervidae shall originate from a herd where a complete herd test was conducted within the past year.

B. The individual animals entering Illinois must be negative to two (2) additional tuberculin tests conducted within 180 and 30 days prior to entry or exhibition.

### RATITES

**(Ostriches, Emus, Rheas, Cassowaries and Kiwis)**

#### Illinois Ratites

There are no requirements governing the movement of ratites within Illinois.

#### Out-of-State Ratites

1. Must be accompanied by a CVI and permit number.

2. Individually identified by leg band or microchip.

3. Negative test for Avian Influenza within 10 days prior to entry.

### PIGEONS

There are no requirements governing the movement of pigeons within or into Illinois.

### RABBITS

There are no requirements governing the movement of rabbits within or into Illinois.

## LLAMAS

There are no requirements governing the movement of Llamas within or into Illinois. A permit and health certificate is required for out-of-state Llamas. A permit may be obtained by calling (217) 782-4944.

### TO LIVESTOCK EXHIBITORS

**ENTRIES MUST BE MADE WITH ONLY ONE EXHIBITOR AND ONE DEPARTMENT FOR EACH ENTRY BLANK. IF MORE BLANKS ARE NEEDED. PLEASE USE A PLAIN 8-1/2 x 11 SHEET OF PAPER TO MAKE ENTRIES.**

1. All Swine in by 6 p.m., Wednesday, August 11th.
2. When making livestock entries, enclose check. No pens or stalls will be reserved when entries are not paid in advance. Please state number of pens or stalls needed—also number of animals entered.
3. If in any case an animal entered is not able to show due to sickness, the judge, superintendent and veterinarian will make the decision and the entry fee will be refunded.
4. No animal shall be loaded or removed from the grounds before **4:00 p.m. (D.S.T.) Sunday, August 15th.** Failure to adhere to this rule will mean forfeiture of premium money won. **NO EARLY RELEASES WILL BE GIVEN BECAUSE OF ANOTHER COUNTY FAIR.**
5. Health papers will be checked before any animal is allowed to show.
6. All livestock entered in Junior and Open Classes will be ready to show promptly at 8:30 a.m. (D.S.T.) Friday, August 13th, except junior class sheep which will show Thursday at 12:00 noon.
8. Parking around barns will be strictly controlled. Designated parking area outside grounds will be provided for exhibitors.

**NO PARKING BETWEEN BARNs OR NORTH OF BARNs.**

9. **ENTRIES IN JR. SHOW MUST BE IN NAME OF INDIVIDUAL – NO FARM NAME ALLOWED.**

**10. ANY CHANGE IN CLASSES MUST BE MADE WITH SECRETARY BEFORE DAY OF SHOW—NO EXCEPTIONS.**

**11. CAMPER PERMITS FOR OPEN LIVESTOCK ONLY. Use Camper Permit form from the back of the book.**

12. Exhibitors are to keep their pens or stalls clean and all aisles clear and open to the public at all times other than when feeding or showing.

13. Feed and grain for livestock must be on the grounds before 10:00 a.m. daily.

**14. The Boone County Fair will allow departure to State Fairs, ONLY, provided the following criteria is met:**

**a. Exhibitor's animals are on our grounds for 72 hours. This will require animals to be on our grounds by 6 p.m. Wed., August 11th.**

**All Other exhibitors not going to a State Fair with a Sunday show may elect to arrive prior to 4:00 p.m. Thursday as in the past.**

**b. The Exhibitor and his animals must be entered in a show at the State Fair on the Sunday of our Fair.**

**c. All Judging of Boone County Fair classes in the exhibitor's department must be completed.**

**d. Exhibitor must acquire a release permit from the Boone County Fair Secretary and be signed by the Secretary, Livestock Superintendent, Department Superintendent, and the Exhibitor.**

**e. Release time will be from 12:00 midnight to 6 a.m. Sunday.**  
**f. UNDER NO CIRCUMSTANCE WILL DEPARTURE BE PERMITTED TO GO TO ANOTHER COUNTY FAIR.**

**FAILURE TO COMPLY WITH THE ABOVE STIPULATIONS WILL RESULT IN FORFEITURE OF ALL PREMIUMS FROM THE BOONE COUNTY FAIR.**

Signed, STEVEN PAULSON, KEVIN WALTER  
Superintendents of Livestock.

### NOTICE – EXHIBITORS

Refer to 2010 Illinois Livestock Regulations.

### HERDSMAN AWARDS

The Boone County Fair Assn. will give an award in each livestock 4-H and Open Show division including ponies, to the exhibitor with the best all-around exhibit.

Each exhibitor will be judged on the neatness and thoroughness of his entry blank; the neatness of his exhibit space, how well he shows his animals, neatness of dress in the show ring and the courtesy and cooperation shown during his stay at the Fair.

All exhibits will be judged for the six days of the Fair.

No superintendent, officer or anyone connected with the Boone County Fair Association in any way shall be eligible for the above awards.

Boone County Fair Association

THE **Shopper** INC  
www.boonecountys shopper.com

**For All Your  
Advertising Needs!**  
"More Than 20,200 Circulation"  
**TOTAL Boone County  
Market Coverage!**

*Also Offering:*

**Specialty Printing**  
Rubber Stamps • Business Cards • Tickets, etc.  
**Wedding Supplies**  
**Graduation Announcements  
& Accessories**

**Serving Boone County Since 1947**  
Ed Branom, President, General Manager

**815-544-2166**

112 Leonard Ct., Belvidere  
www.boonecountys shopper.com

*Sponsor of the Kid Fiddlers Show*

*The Boone County Fair Association*

*wishes to congratulate*

**SKINNERS AMUSEMENTS**

*for over 100 years of dedicated service.*

# Your Boone County Community Granges



*invite you to be a part of:*

- \*Ownership and operation of the Boone County Fair
- \*Youth activities
- \*Deaf activities
- \*Many other social & community functions

*“The Grange provides the opportunity...  
The People provide the leadership...  
The Community reaps the benefits.”*

*to join contact any member of:*

**Beaver Valley Grange**

**Big Thunder Grange**

**Capron Grange**

**County Line Grange**

**Flora Grange**

**LeRoy Grange**

**Prairie Grange**

## PREMIUM LIST Department A – Beef Cattle

DALE RHODE (815-544-9233) Superintendent, DALE MUCK and TERRY HARDY, Assistant Superintendents

### PLEASE READ RULES 3 and 38 BEFORE MAKING ENTRIES

Mailed entries must be postmarked before midnight, Saturday, July 16th.

Entries can be made in person and will be taken in the Administration Bldg. on the fairgrounds which will be open on Saturday July 23rd, 9:00 a.m. to 5:00 p.m., and Sunday July 24th, 9:00 a.m. to 5:00 p.m. only. (See Rule No. 2)

Do Not Make Entries For Champions    Entry Fee \$5.00 Per Entry    Stall Rent \$4.00 Per Tie

**Administration Fee \$3.00 Per Dept., includes 4-H exhibitors, no fee for junior dept. if entered in open show.**

**Exhibitor passes and vehicle stickers will NOT be mailed. They can be picked up at the Administration Bldg.**

## Premiums Offered – \$21,528.00

Judge – TBA

To Be Judged Friday, August 12th

For a Sunday morning release, see RULE #14, PAGE 10

**NOTE: Tieouts in designated area ONLY.**

Please refrain from the use of butt fans if at all possible.

All entries in group classes must be shown in individual class.

All animals other than Angus – Hereford – Shorthorn will be shown as all other breeds.

Members of immediate family ONLY may combine entries to show in group class – OPEN SHOW ONLY

All Classes must have at least five entries or they will be combined with another class.

No livestock shall be loaded or removed from the grounds before 4:00 p.m. Sunday, August 14th.

**All livestock exhibitor's trucks, trailers and vehicles must be parked outside the gates.**

**All exhibitors of animals at the Boone County Fair shall comply with the provisions of the Illinois Humane Care for Animals Act. If violations are observed, the animals will be excused from exhibition and be ordered to be removed from the grounds with all awards being forfeited. As determined by Fair Officials, Superintendents or Veterinarians, any practice or deviation from normal human husbandry practices, including, but not limited to artificial manipulations, physical abuse,**

**medical treatments or mechanical applications of any substance, other than on the prescription of a licensed veterinarian, will constitute a violation of show rules and are subject to the above provisions.**

**No feed bunks allowed around barn.**

**Date of ownership or copies thereof, must be available, upon request, at all times.**

**Ownership dates: Heifer - June 1st, Cow, January 1st**

**Base dates – January 1 and July 1.**

Senior yearling, born July 1 to December 31, 2009

Junior yearling, Jan. 1 to March 31, 2010

Spring yearling, April 1 to June 30, 2010

Summer yearling, July 1 to Sept. 30, 2010

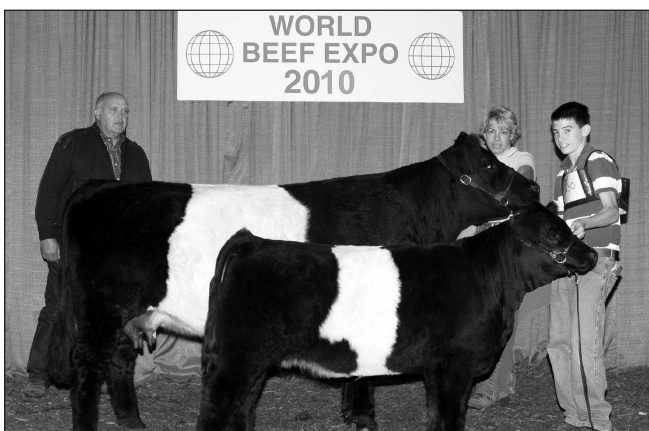
Senior calf, Oct. 1 to Dec. 31, 2010

Junior calf, Jan. 1 and after 2011

**BREEDER'S HERD – 1 Bull, 2 Females, any age, bred and owned by exhibitor or immediate family. Animals must be shown in individual classes. Papers will be checked. All breeds competing. No entry fee. SEE PREMIUM #157.**

Premium Number	1st	2nd	3rd	4th	5th	Premium Number	1st	2nd	3rd	4th	5th
<b>SHORTHORN</b>											
1. Bull, junior calf	\$40	\$36	\$32	\$26	\$20	20. Pair Calves, 1 bull and 1 heifer	\$40	\$36	\$32	\$26	\$20
2. Bull, senior calf	\$40	\$36	\$32	\$26	\$20	21. Pair Yearlings, both sexes	\$40	\$36	\$32	\$26	\$20
3. Bull, summer yearling	\$40	\$36	\$32	\$26	\$20	22. Best six head, both sexes	\$40	\$36	\$32	\$26	\$20
4. Bull, spring yearling	\$40	\$36	\$32	\$26	\$20	<b>23. Calf, Champion Bull</b>					<b>Rosette</b>
5. Bull, junior yearling	\$40	\$36	\$32	\$26	\$20	<b>24. Junior Champion Bull</b>					<b>Rosette</b>
6. Bull, senior yearling	\$40	\$36	\$32	\$26	\$20	<b>25. Senior Champion Bull</b>					<b>Rosette</b>
7. Bull, 2 years old or over	\$40	\$36	\$32	\$26	\$20	<b>26. Calf, Champion Female</b>					<b>Rosette</b>
8. Heifer, junior calf	\$40	\$36	\$32	\$26	\$20	<b>27. Junior Champion Female</b>					<b>Rosette</b>
9. Heifer, senior calf	\$40	\$36	\$32	\$26	\$20	<b>28. Senior Champion Female</b>					<b>Rosette</b>
10. Heifer, summer yearling	\$40	\$36	\$32	\$26	\$20	<b>29. Grand Champion Bull</b>					<b>Rosette</b>
11. Heifer, spring yearling	\$40	\$36	\$32	\$26	\$20	<b>30. Reserve Champion Bull</b>					<b>Rosette</b>
12. Heifer, junior yearling	\$40	\$36	\$32	\$26	\$20	<b>31. Grand Champion Female</b>					<b>Rosette</b>
13. Heifer, senior yearling	\$40	\$36	\$32	\$26	\$20	<b>32. Reserve Champion Female</b>					<b>Rosette</b>
14. Cow in production with natural calf	\$40	\$36	\$32	\$26	\$20	<b>ANGUS</b>					
15. Jr. Get of Sire, 3 head, both sexes, spring yearling or younger, bulls and heifers	\$40	\$36	\$32	\$26	\$20	33. Bull, junior calf	\$40	\$36	\$32	\$26	\$20
16. Sr. Get of Sire, 4 head, any age, both sexes, owned by 1 exhibitor	\$40	\$36	\$32	\$26	\$20	34. Bull, senior calf	\$40	\$36	\$32	\$26	\$20
17. Produce of Dam, 2 animals, any age, either sex	\$40	\$36	\$32	\$26	\$20	35. Bull, summer yearling	\$40	\$36	\$32	\$26	\$20
18. Pair Females	\$40	\$36	\$32	\$26	\$20	36. Bull, spring yearling	\$40	\$36	\$32	\$26	\$20
19. Pair Bulls	\$40	\$36	\$32	\$26	\$20	37. Bull, junior yearling	\$40	\$36	\$32	\$26	\$20
						38. Bull, senior yearling	\$40	\$36	\$32	\$26	\$20
						39. Bull, 2 years old or over	\$40	\$36	\$32	\$26	\$20
						40. Heifer, junior calf	\$40	\$36	\$32	\$26	\$20

Premium Number	1st	2nd	3rd	4th	5th	Premium Number	1st	2nd	3rd	4th	5th
						<b>HEREFORD</b>					
41. Heifer, senior calf	\$40	\$36	\$32	\$26	\$20	65. Bull, junior calf	\$40	\$36	\$32	\$26	\$20
42. Heifer, summer yearling	\$40	\$36	\$32	\$26	\$20	66. Bull, senior calf	\$40	\$36	\$32	\$26	\$20
43. Heifer, spring yearling	\$40	\$36	\$32	\$26	\$20	67. Bull, summer yearling	\$40	\$36	\$32	\$26	\$20
44. Heifer, junior yearling	\$40	\$36	\$32	\$26	\$20	68. Bull, spring yearling	\$40	\$36	\$32	\$26	\$20
45. Heifer, senior yearling	\$40	\$36	\$32	\$26	\$20	69. Bull, junior yearling	\$40	\$36	\$32	\$26	\$20
46. Cow in production with natural calf	\$40	\$36	\$32	\$26	\$20	70. Bull, senior yearling	\$40	\$36	\$32	\$26	\$20
47. Jr. Get of Sire, 3 head, both sexes, spring yearling or younger, bulls and heifers	\$40	\$36	\$32	\$26	\$20	71. Bull, 2 years old or over	\$40	\$36	\$32	\$26	\$20
48. Sr. Get of Sire, 4 head, any age, both sexes, owned by 1 exhibitor	\$40	\$36	\$32	\$26	\$20	72. Heifer, junior calf	\$40	\$36	\$32	\$26	\$20
49. Produce of Dam, 2 animals, any age, either sex	\$40	\$36	\$32	\$26	\$20	73. Heifer, senior calf	\$40	\$36	\$32	\$26	\$20
50. Pair Females	\$40	\$36	\$32	\$26	\$20	74. Heifer, summer yearling	\$40	\$36	\$32	\$26	\$20
51. Pair Bulls	\$40	\$36	\$32	\$26	\$20	75. Heifer, spring yearling	\$40	\$36	\$32	\$26	\$20
52. Pair Calves, 1 bull and 1 heifer	\$40	\$36	\$32	\$26	\$20	76. Heifer, junior yearling	\$40	\$36	\$32	\$26	\$20
53. Pair Yearlings, both sexes	\$40	\$36	\$32	\$26	\$20	77. Heifer, senior yearling	\$40	\$36	\$32	\$26	\$20
54. Best six head, both sexes	\$40	\$36	\$32	\$26	\$20	78. Cow in production with natural calf	\$40	\$36	\$32	\$26	\$20
55. Calf, Champion Bull					<b>Rosette</b>	79. Jr. Get of Sire, 3 head, both sexes spring yearling or younger, bulls and heifers	\$40	\$36	\$32	\$26	\$20
56. Junior Champion Bull					<b>Rosette</b>	80. Sr. Get of Sire, 4 head, any age, both sexes, owned by 1 exhibitor	\$40	\$36	\$32	\$26	\$20
57. Senior Champion Bull					<b>Rosette</b>	81. Produce of Dam, 2 animals, any age, either sex	\$40	\$36	\$32	\$26	\$20
58. Calf, Champion Female					<b>Rosette</b>	82. Pair Females	\$40	\$36	\$32	\$26	\$20
59. Junior Champion Female					<b>Rosette</b>	83. Pair Bulls	\$40	\$36	\$32	\$26	\$20
60. Senior Champion Female					<b>Rosette</b>	84. Pair Calves, 1 bull and 1 heifer	\$40	\$36	\$32	\$26	\$20
61. Grand Champion Bull					<b>Rosette</b>	85. Pair Yearlings, both sexes	\$40	\$36	\$32	\$26	\$20
62. Reserve Champion Bull					<b>Rosette</b>	86. Best six head, both sexes	\$40	\$36	\$32	\$26	\$20
63. Grand Champion Female					<b>Rosette</b>						
64. Reserve Champion Female					<b>Rosette</b>						

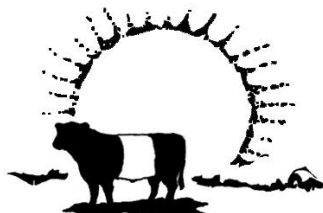


**Sunnybrook Farms Sophia & Breeze  
Cow/calf and Dam of the Year**



**Sunnybrook Farms Jackie  
Show Female of the Year**

**Combining quality, carcass and conformation to produce  
cattle that perform in the pasture and in the show ring.**



## SunnyBrook Farms

2201 Stone Quarry Rd.  
Belvidere, IL 61008

Terry and Julie Willis  
(815) 547-6912

Steve and Chris Willis  
sbfarms@hotmail.com

Premium Number	1st	2nd	3rd	4th	5th	Premium Number	1st	2nd	3rd	4th	5th
87. Calf, Champion Bull						.Rosette					
88. Junior Champion Bull						.Rosette					
89. Senior Champion Bull						.Rosette					
90. Calf, Champion Female						.Rosette					
91. Junior Champion Female						.Rosette					
92. Senior Champion Female						.Rosette					
93. Grand Champion Bull						.Rosette					
94. Reserve Champion Bull						.Rosette					
95. Grand Champion Female						.Rosette					
96. Reserve Champion Female						.Rosette					
<b>ALL OTHER BREEDS</b>											
97. Bull, junior calf	\$40	\$36	\$32	\$26	\$20						
98. Bull, senior calf	\$40	\$36	\$32	\$26	\$20						
99. Bull, summer yearling	\$40	\$36	\$32	\$26	\$20						
100. Bull, spring yearling	\$40	\$36	\$32	\$26	\$20						
101. Bull, junior yearling	\$40	\$36	\$32	\$26	\$20						
102. Bull, senior yearling	\$40	\$36	\$32	\$26	\$20						
103. Bull, 2 years old or over	\$40	\$36	\$32	\$26	\$20						
104. Heifer, junior calf	\$40	\$36	\$32	\$26	\$20						
105. Heifer, senior calf	\$40	\$36	\$32	\$26	\$20						
106. Heifer, summer yearling	\$40	\$36	\$32	\$26	\$20						
107. Heifer, spring yearling	\$40	\$36	\$32	\$26	\$20						
108. Heifer, junior yearling	\$40	\$36	\$32	\$26	\$20						
109. Heifer, senior yearling	\$40	\$36	\$32	\$26	\$20						
110. Cow in production with natural calf	\$40	\$36	\$32	\$26	\$20						
111. Jr. Get of Sire, 3 head, both sexes spring yearling or younger, owned by 1 exhibitor	\$40	\$36	\$32	\$26	\$20						
112. Sr. Get of Sire, 4 head, any age, both sexes, owned by 1 exhibitor	\$40	\$36	\$32	\$26	\$20						
113. Produce of Dam, 2 animals, any age, either sex	\$40	\$36	\$32	\$26	\$20						
114. Pair Females	\$40	\$36	\$32	\$26	\$20						
115. Pair Bulls	\$40	\$36	\$32	\$26	\$20						
116. Pair Calves, 1 bull and 1 heifer	\$40	\$36	\$32	\$26	\$20						
117. Pair Yearlings, both sexes	\$40	\$36	\$32	\$26	\$20						
118. Best six head, both sexes	\$40	\$36	\$32	\$26	\$20						
119. Calf, Champion Bull						.Rosette					
120. Junior Champion Bull						.Rosette					
121. Senior Champion Bull						.Rosette					
122. Calf, Champion Female						.Rosette					
123. Junior Champion Female						.Rosette					
124. Senior Champion Female						.Rosette					
125. Grand Champion Bull						.Rosette					
126. Reserve Champion Bull						.Rosette					
127. Grand Champion Female						.Rosette					
128. Reserve Champion Female						.Rosette					
<b>COMMERCIAL</b>											
129. Bull, junior calf born after Jan. 1, 2011	\$40	\$36	\$32	\$26	\$20						
130. Bull, one year and under 2	\$40	\$36	\$32	\$26	\$20						
131. Bull, 2 years old or over	\$40	\$36	\$32	\$26	\$20						
132. Heifer, junior calf born after Jan. 1, 2011	\$40	\$36	\$32	\$26	\$20						
133. Heifer, one year and under 2	\$40	\$36	\$32	\$26	\$20						
134. Cow in production with natural calf	\$40	\$36	\$32	\$26	\$20						

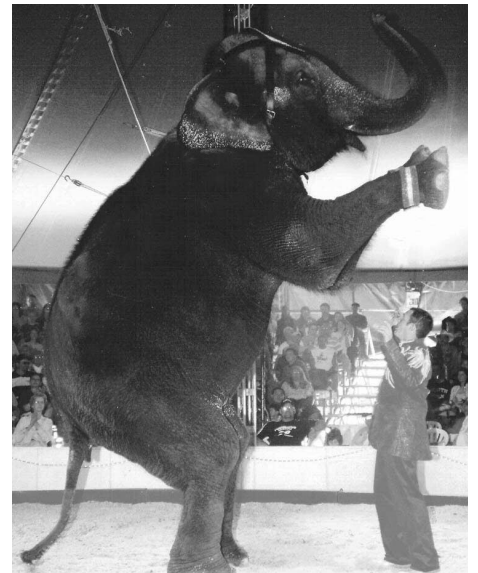
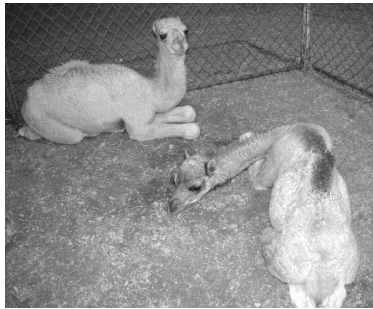
## B&C Ranch Adorable Animal Actors

During our show, take an educational tour through the daily lives of the B&C Ranch Adorable Animal Actors.

Learn the differences between Asian and African elephants...  
 What they eat and how much...  
 Who's more intelligent, camels or horses?

How much water can an elephant's trunk hold?

You'll learn the answers to all these questions and more!



We have a wide variety of talented animals in our show as well as the friendliest herd of elephants anywhere. Before going home, take a leisurely ride on one of our darling dromedaries. Then, last but certainly not least, you'll have the opportunity to pet, feed and ride the largest of all the land animals . . . The elephant!

Premium Number	1st	2nd	3rd	4th	5th
135. Jr. Get of Sire, 3 head, both sexes spring yearling or younger, bulls and heifers . . . . .	\$40	\$36	\$32	\$26	\$20
136. Sr. Get of Sire, 4 head, any age, both sexes, owned by 1 exhibitor . . . . .	\$40	\$36	\$32	\$26	\$20
137. Produce of Dam, 2 animals, any age, either sex.	\$40	\$36	\$32	\$26	\$20
138. Pair Females . . . . .	\$40	\$36	\$32	\$26	\$20
139. Pair Bulls . . . . .	\$40	\$36	\$32	\$26	\$20
140. Pair Calves, 1 bull and 1 heifer . . . . .	\$40	\$36	\$32	\$26	\$20
141. Pair Yearlings, both sexes . . . . .	\$40	\$36	\$32	\$26	\$20
142. Best six head, both sexes . . . . .	\$40	\$36	\$32	\$26	\$20
143. Calf, Champion Commercial Bull . . . . .	Rosette				
144. Junior Champion Commercial Bull . . . . .	Rosette				
145. Senior Champion Commercial Bull . . . . .	Rosette				
146. Calf, Champion Commercial Female . . . . .	Rosette				
147. Junior Champion Commercial Female . . . . .	Rosette				
148. Senior Champion Commercial Female . . . . .	Rosette				
149. Grand Champion Commercial Bull . . . . .	Rosette				
150. Reserve Champion Commercial Bull . . . . .	Rosette				
151. Grand Champion Commercial Female . . . . .	Rosette				
152. Reserve Champion Commercial Female . . . . .	Rosette				
153. Grand Champion Male over all breeds . . . . .	Trophy				
154. Reserve Champion Male over all breeds . . . . .	Rosette				
155. Grand Champion Female over all breeds . . . . .	Trophy				
156. Reserve Champion Female over all breeds . . . . .	Rosette				

**BREEDER'S HERD - No Entry Fee**

157. Breeder's Herd (1 bull, 2 females any age). . . . . \$175 \$75

**SHOWMANSHIP - No Entry Fee**

Must have shown on Friday or Saturday in the Open or Junior Show.

Must show own animal.

158. Age 8-11 . . . . .	\$35	\$30	\$25	\$20	\$10
159. Age 12-15 . . . . .	\$35	\$30	\$25	\$20	\$10
160. Age 16-19 . . . . .	\$35	\$30	\$25	\$20	\$10

**STEER SHOW**

Entry Fee \$5.00 Per Entry . . . . . Stall Rent \$4.00 Per Tie

To Be Judged Saturday, August 13th

**Steer exhibitors must show registration paper for purebred class or show as crossbred.**

LIMIT TO 3 STEERS PER EXHIBITOR

AND LIMIT 2 STEERS PER CLASS PER EXHIBITOR

1st and 2nd Place Animals will show for Grand Champion.

If more than 15 animals in one class, the class will be split.

No feed bunks around barns. No artificial color or body altering

Weigh-in times are one hour after breeding show on Friday.

**Class weight to be determined at weigh-in.**

Premium Number	1st	2nd	3rd	4th	5th	6th	7th
177. Cross Breeds Heavyweight . . . . .	\$70	\$50	\$40	\$36	\$32	\$28	\$24
178. Grand Champion Angus . . . . .	Rosette						
179. Reserve Grand Champion Angus . . . . .	Rosette						
180. Grand Champion Hereford . . . . .	Rosette						
181. Reserve Grand Champion Hereford . . . . .	Rosette						
182. Grand Champion Shorthorn . . . . .	Rosette						
183. Reserve Grand Champion Shorthorn . . . . .	Rosette						
184. Grand Champion Cross Breeds . . . . .	Rosette						
185. Reserve Grand Champion Cross Breeds . . . . .	Rosette						
186. Grand Champion Steer Over All Breed . \$250. . . . .	Rosette						
187. Reserve Grand Champion Steer Over All Breed . \$200 . . . . .	Rosette						

*If Champion Steer Overall is a shorthorn, Shorthorn's Unlimited will add \$100.00 to premium.*

**SPECIAL CLASS**

**TOP TEN HEREFORD ASSOCIATION RULES**

1. To be eligible for this special class a Hereford steer must have been purchased from or raised by a Top Ten Hereford Association member.

2. Exhibitors must present the blue copy of the certificate of eligibility, obtained from the breeder of their calf, prior to entering the show ring.

3. No special entry fee is required for this class on the Boone County Fair entry blank.

Premiums will be as follows:

1st - \$100	5th - \$60	8th - \$30
2nd - \$ 90	6th - \$50	9th - \$20
3rd - \$ 80	7th - \$40	10th - \$10
4th - \$ 70		

**Note:** Exhibitors please bring your blue certificate or eligibility with you at the time of show. It must be checked before you are permitted to enter the show ring.

**NORTHERN ILLINOIS ANGUS ASSOC. HEIFER PROGRAM**

Heifers purchased or raised and nominated to the Northern Illinois Angus Association are eligible to show in this special Angus heifer class.

Premiums are:

1st - \$100	5th - \$60	8th - \$30
2nd - \$ 90	6th - \$50	9th - \$20
3rd - \$ 80	7th - \$40	10th - \$10
4th - \$ 70		

There are no entry fees. Entries will be made the day of the Heifer show.

Angus steers purchased or raised and nominated to the Northern Illinois Angus Association are eligible to show in this special Angus steer class.

Premiums are:

1st - \$100	5th - \$60	8th - \$30
2nd - \$ 90	6th - \$50	9th - \$20
3rd - \$ 80	7th - \$40	10th - \$10
4th - \$ 70		

There are no entry fees. Entries will be made the day of the open steer show.

**SHORTHORNS UNLIMITED**

Must S.U. Certificate to be eligible. Entries made day of show.

1st - \$100	5th - \$60	8th - \$30
2nd - \$ 90	6th - \$50	9th - \$20
3rd - \$ 80	7th - \$40	10th - \$10
4th - \$ 70		

**BOONE COUNTY JUNIOR PROGRAM**

One class of steers. One class of heifers. The steer or heifer must meet the guidelines for the class according to the rules set by the Boone County Angus Association.

Premiums will be:

1st - \$100	5th - \$60	8th - \$30
2nd - \$ 90	6th - \$50	9th - \$20
3rd - \$ 80	7th - \$40	10th - \$10
4th - \$ 70		

If there are less than 10 animals per class, the premiums will be adjusted accordingly.

Premium Number	1st	2nd	3rd	4th	5th	6th	7th
161. Lightweight Angus . . . . .	\$70	\$50	\$40	\$36	\$32	\$28	\$24
162. Mediumweight Angus . . . . .	\$70	\$50	\$40	\$36	\$32	\$28	\$24
163. Heavyweight Angus . . . . .	\$70	\$50	\$40	\$36	\$32	\$28	\$24
164. Lightweight Hereford . . . . .	\$70	\$50	\$40	\$36	\$32	\$28	\$24
165. Mediumweight Hereford . . . . .	\$70	\$50	\$40	\$36	\$32	\$28	\$24
166. Heavyweight Hereford . . . . .	\$70	\$50	\$40	\$36	\$32	\$28	\$24
167. Lightweight Shorthorn . . . . .	\$70	\$50	\$40	\$36	\$32	\$28	\$24
168. Mediumweight Shorthorn . . . . .	\$70	\$50	\$40	\$36	\$32	\$28	\$24
169. Heavyweight Shorthorn . . . . .	\$70	\$50	\$40	\$36	\$32	\$28	\$24
170. Cross Breeds Lightweight . . . . .	\$70	\$50	\$40	\$36	\$32	\$28	\$24
171. Cross Breeds Med. Lightweight . . . . .	\$70	\$50	\$40	\$36	\$32	\$28	\$24
172. Cross Breeds Heavy Lightweight . . . . .	\$70	\$50	\$40	\$36	\$32	\$28	\$24
173. Cross Breeds Lt. Mediumweight . . . . .	\$70	\$50	\$40	\$36	\$32	\$28	\$24
174. Cross Breeds Mediumweight . . . . .	\$70	\$50	\$40	\$36	\$32	\$28	\$24
175. Cross Breeds Heavy Mediumweight . . . . .	\$70	\$50	\$40	\$36	\$32	\$28	\$24
176. Cross Breeds Light Heavyweight . . . . .	\$70	\$50	\$40	\$36	\$32	\$28	\$24

# The Fair will have Livestock Shows This Year!

## Exhibitor Information

We feel it is important to address Foot and Mouth Disease (FMD) with you. FMD is a foreign animal disease and is so classified by the United States Department of Agriculture (USDA) and the Canadian Food Inspection Agency (CFIA). The fair is keeping abreast of information about the occurrence of FMD in the United Kingdom, France and the Netherlands. We are following the USDA/CFIA recommended practices to insure the safety of your livestock.

According to the USDA and the CFIA there are only two continents, North America and Australia, that are free of FMD. Two-thirds of the world lives with FMD in their animals on a daily basis. The recent occurrences in the United Kingdom, France, and the Netherlands have received a great deal of media coverage there as well as the US and Canada. The probability of FMD coming to the US or Canada as a result of these occurrences has increased only slightly. However, awareness of the situation may have decreased the possibility of an occurrence in the US or Canada.

Canada and the United States are both very vigilant in the prevention of the spread of FMD, thus making their common border very safe for both countries.

Both the USDA Animal and Plant Health Inspection Service and the CFIA have plans to contain occurrences of foreign animal diseases, including FMD. The USDA plan is called the National Emergency Response to a Highly Contagious Animal Disease and the CFIA plan is the Food and Agriculture Emergency Response System. These plans would be put into effect immediately upon a suspected case of FMD. These plans include varying steps depending on the severity and probability of the suspected case being FMD. State and provincial departments of agriculture have also been having meetings to educate their own employees about this response.

Education about FMD is very important.

FMD cannot be contracted by humans.

FMD in most cases will not kill livestock unless they are young or already in a weakened state. There is a vaccination for FMD.

Sincerely,



Lyle Lee

Fair President

Information approved by the United States Department of Agriculture and the Canadian Food Inspection Agency.



# Boone County Fire District #2

US 20, Garden Prairie  
1777 Henry Luckow Lane, Belvidere

We appreciate your continued support of our local firefighters.



We'll be making fresh donuts every day during the Boone County Fair! Be sure to visit our building located near the grandstand.

Premium Number	1st	2nd	3rd	4th	5th	6th	7th	8th	9th	10th
260. SR. Two-Year Old Cow	\$40	\$36	\$32	\$28	\$24	\$20				
261. SR. Two-Year Old Cow–Best Udder (no fee)	\$20									
262. JR. Three-Year Old Cow	\$40	\$36	\$32	\$28	\$24	\$20				
263. JR. Three Year Old Cow–Best Udder (no fee)	\$20									
264. SR. Three-Year Old Cow	\$40	\$36	\$32	\$28	\$24	\$20				
265. SR. Three-Year Old Cow–Best Udder (no fee)	\$20									
266. Four-Year Old Cow	\$40	\$36	\$32	\$28	\$24	\$20				
267. Four-Year Old Cow–Best Udder (no fee)	\$20									
268. Five-Year Old Cow	\$40	\$36	\$32	\$28	\$24	\$20				
269. Five-Year Old Cow–Best Udder (no fee)	\$20									
270. Aged Cow	\$40	\$36	\$32	\$28	\$24	\$20				
271. Aged Cow–Best Udder (no fee)	\$20									
272. 100,000 lbs. Cow	\$40	\$36	\$32	\$28	\$24	\$20				
273. 100,000 lbs. Cow–Best Udder (no fee)	\$20									
274. Dry 3- and 4-Year Old Cow	\$40	\$36	\$32	\$28	\$24	\$20				
275. Dry Aged Cow	\$40	\$36	\$32	\$28	\$24	\$20				
276. Dam and Daughter	\$40	\$36	\$32	\$28	\$24					
277. SR. BEST THREE FEMALES–3 females over 2 yrs. of age, bred by exhibitor	\$40	\$36	\$32	\$28	\$24					
278. PRODUCE OF DAM–2 animals, any age, with same dam	\$40	\$36	\$32	\$28	\$24					
279. PAIR of Cows, In Milk, any age, owned by exhibitor	\$40	\$36	\$32	\$28	\$24					
280. EXHIBITOR’S HERD–Five Head–2 must be at least 2 yrs. of age or over, two under 2 yrs. of age, and one any age. ALL to be owned & maintained by exhibitor. With 3 HEAD to be BRED by EXHIBITORS	\$40	\$36	\$32	\$28	\$24					
281. Junior Champion Female										Rosette
282. Senior Champion Female										Rosette
283. Grand Champion Female										Rosette

**RED & WHITE HOLSTEIN**

284. Spring Heifer Calf	\$40	\$36	\$32	\$28	\$24	\$20	\$16	\$12	\$10	\$8
285. Winter Heifer Calf	\$40	\$36	\$32	\$28	\$24	\$20	\$16	\$12	\$10	\$8
286. Fall Heifer Calf	\$40	\$36	\$32	\$28	\$24	\$20	\$16	\$12	\$10	\$8
287. Summer Yearling Heifer	\$40	\$36	\$32	\$28	\$24	\$20	\$16	\$12	\$10	\$8
288. Spring Yearling Heifer	\$40	\$36	\$32	\$28	\$24	\$20	\$16	\$12	\$10	\$8
289. Winter Yearling Heifer	\$40	\$36	\$32	\$28	\$24	\$20	\$16	\$12	\$10	\$8
290. Fall Yearling Heifer	\$40	\$36	\$32	\$28	\$24	\$20	\$16	\$12	\$10	\$8
291. JR. BEST THREE FEMALES–3 head Fall Yearling & under	\$40	\$36	\$32	\$28	\$24					
292. JR. Two-Year Old Cow	\$40	\$36	\$32	\$28	\$24	\$20				
293. JR. Two-Year Old Cow–Best Udder (no fee)	\$20									
294. SR. Two-Year Old Cow	\$40	\$36	\$32	\$28	\$24	\$20				
295. SR. Two-Year Old Cow–Best Udder (no fee)	\$20									
296. JR. Three-Year Old Cow	\$40	\$36	\$32	\$28	\$24	\$20				
297. JR. Three Year Old Cow–Best Udder (no fee)	\$20									
298. SR. Three-Year Old Cow	\$40	\$36	\$32	\$28	\$24	\$20				
299. SR. Three-Year Old Cow–Best Udder (no fee)	\$20									
300. Four-Year Old Cow	\$40	\$36	\$32	\$28	\$24	\$20				
301. Four-Year Old Cow–Best Udder (no fee)	\$20									



**Open and Junior Shows – Dairy:**

No antibiotic milk! Violators will pay for milk loss! All Cows will be tested! The violator will pay all costs The Boone County Fair Association reserves the right to, at any time, inspect and reject any and all animals.

**These rules will be strictly enforced by the BCFA.**



**BRAD PETERS**

2028 North State Street, Suite 100  
Belvidere, Illinois 61008

Phone: (815) 544-2950 Home: (815) 547-4566

Premium Number		1st	2nd	3rd	4th	5th	6th	7th	8th	9th	10th
302.	Five-Year Old Cow	\$40	\$36	\$32	\$28	\$24	\$20				
303.	Five-Year Old Cow—Best Udder (no fee)	\$20									
304.	Aged Cow	\$40	\$36	\$32	\$28	\$24	\$20				
305.	Aged Cow—Best Udder (no fee)	\$20									
306.	100,000 lbs. Cow	\$40	\$36	\$32	\$28	\$24	\$20				
307.	100,000 lbs. Cow—Best Udder (no fee)	\$20									
308.	Dry 3- and 4-Year Old Cow	\$40	\$36	\$32	\$28	\$24	\$20				
309.	Dry Aged Cow	\$40	\$36	\$32	\$28	\$24	\$20				
310.	Dam and Daughter	\$40	\$36	\$32	\$28	\$24					
311.	SR. BEST THREE FEMALES—3 females over 2 yrs. of age, bred by exhibitor	\$40	\$36	\$32	\$28	\$24					
312.	PRODUCE OF DAM—2 animals, any age, with same dam	\$40	\$36	\$32	\$28	\$24					
313.	PAIR of Cows, In Milk, any age, owned by exhibitor	\$40	\$36	\$32	\$28	\$24					
314.	EXHIBITOR'S HERD—Five Head—2 must be at least 2 yrs. of age or over, two under 2 yrs. of age, and one any age. ALL to be owned & maintained by exhibitor. With 3 HEAD to be BRED by EXHIBITORS	\$40	\$36	\$32	\$28	\$24					
315.	Junior Champion Female										Rosette
316.	Senior Champion Female										Rosette
317.	Grand Champion Female										Rosette

**JERSEY**

318.	Spring Heifer Calf	\$40	\$36	\$32	\$28	\$24	\$20	\$16	\$12	\$10	\$8
319.	Winter Heifer Calf	\$40	\$36	\$32	\$28	\$24	\$20	\$16	\$12	\$10	\$8
320.	Fall Heifer Calf	\$40	\$36	\$32	\$28	\$24	\$20	\$16	\$12	\$10	\$8
321.	Summer Yearling Heifer	\$40	\$36	\$32	\$28	\$24	\$20	\$16	\$12	\$10	\$8
322.	Spring Yearling Heifer	\$40	\$36	\$32	\$28	\$24	\$20	\$16	\$12	\$10	\$8
323.	Winter Yearling Heifer	\$40	\$36	\$32	\$28	\$24	\$20	\$16	\$12	\$10	\$8
324.	Fall Yearling Heifer	\$40	\$36	\$32	\$28	\$24	\$20	\$16	\$12	\$10	\$8
325.	JR. BEST THREE FEMALES—3 head Fall Yearling & under	\$40	\$36	\$32	\$28	\$24					
326.	JR. Two-Year Old Cow	\$40	\$36	\$32	\$28	\$24	\$20				
327.	JR. Two-Year Old Cow—Best Udder (no fee)	\$20									
328.	SR. Two-Year Old Cow	\$40	\$36	\$32	\$28	\$24	\$20				
329.	SR. Two-Year Old Cow—Best Udder (no fee)	\$20									
330.	JR. Three-Year Old Cow	\$40	\$36	\$32	\$28	\$24	\$20				
331.	JR. Three Year Old Cow—Best Udder (no fee)	\$20									
332.	SR. Three-Year Old Cow	\$40	\$36	\$32	\$28	\$24	\$20				
333.	SR. Three-Year Old Cow—Best Udder (no fee)	\$20									
334.	Four-Year Old Cow	\$40	\$36	\$32	\$28	\$24	\$20				
335.	Four-Year Old Cow—Best Udder (no fee)	\$20									
336.	Five-Year Old Cow	\$40	\$36	\$32	\$28	\$24	\$20				
337.	Five-Year Old Cow—Best Udder (no fee)	\$20									
338.	Aged Cow	\$40	\$36	\$32	\$28	\$24	\$20				
339.	Aged Cow—Best Udder (no fee)	\$20									
340.	100,000 lbs. Cow	\$40	\$36	\$32	\$28	\$24	\$20				
341.	100,000 lbs. Cow—Best Udder (no fee)	\$20									
342.	Dry 3- and 4-Year Old Cow	\$40	\$36	\$32	\$28	\$24	\$20				
343.	Dry Aged Cow	\$40	\$36	\$32	\$28	\$24	\$20				
344.	Dam and Daughter	\$40	\$36	\$32	\$28	\$24					
345.	SR. BEST THREE FEMALES—3 females over 2 yrs. of age, bred by exhibitor	\$40	\$36	\$32	\$28	\$24					
346.	PRODUCE OF DAM—2 animals, any age, with same dam	\$40	\$36	\$32	\$28	\$24					
347.	PAIR of Cows, In Milk, any age, owned by exhibitor	\$40	\$36	\$32	\$28	\$24					
348.	EXHIBITOR'S HERD—Five Head—2 must be at least 2 yrs. of age or over, two under 2 yrs. of age, and one any age. ALL to be owned & maintained by exhibitor. With 3 HEAD to be BRED by EXHIBITORS	\$40	\$36	\$32	\$28	\$24					
349.	Junior Champion Female										Rosette
350.	Senior Champion Female										Rosette
351.	Grand Champion Female										Rosette



**BROWN SWISS**

352.	Spring Heifer Calf	\$40	\$36	\$32	\$28	\$24	\$20	\$16	\$12	\$10	\$8
353.	Winter Heifer Calf	\$40	\$36	\$32	\$28	\$24	\$20	\$16	\$12	\$10	\$8
354.	Fall Heifer Calf	\$40	\$36	\$32	\$28	\$24	\$20	\$16	\$12	\$10	\$8