

PREMIUM LIST

Department H – Junior Show Youth Day

AGRICULTURAL DEPARTMENT

Steven Paulson (815-742-0325), Superintendent

PLEASE READ RULE 3 AND 33 From the Notice to Exhibitors BEFORE MAKING ENTRIES

Mailed entries must be postmarked before midnight Saturday, July 12th

Entries can be made in person and will be taken in the Administration Bldg. on the fairgrounds which will be open on Saturday, July 19th, 9:00 am to 5:00 pm, and Sunday July 20th, 9:00 am to 5:00 pm ONLY.

Do Not Make Entries for Champions

Open to any boy or girl age 8 to 21 as of September 1, 2024

Entry Fees:

Dairy and Beef Classes – \$5.00 per Entry Steer Classes – \$5.00 per Entry

Sheep Classes – \$2.00 per Entry Barrow Classes – \$2.00 per Entry

Administration Fee \$5.00 Per Dept., includes 4-H Exhibitors, no fee for Junior Dept. if entered in Open Show.

Premiums Offered – \$40,560.00

For an Early Release and/or Sunday morning release, see RULE #58, page 6

Open to all 4-H members and any boy or girl who is 8 years of age and not yet 21 years of age on or before September 1 of the previous year to the fair.

All entries in the Junior Show must be made in compliance with General Rule No. 2 in premium catalog. No late entry privilege granted. All entries must be the results of the labor of the boy or girl exhibiting, must be worthy of a premium to receive award. See Rule No. 19. No grade animals to be shown except in Market Class.

ALL CATTLE EXHIBITED AT ILLINOIS COUNTY FAIRS WILL BE REQUIRED TO HAVE AN ELECTRONIC 840 TAG.

All purebred animals MUST be REGISTERED in BOY or GIRL'S NAME—no farm names or partnerships—to be eligible to be shown in Junior Show.

See rules in regard to tuberculin and blood test requirements. Each exhibitor must check registration and health papers at the Superintendent's headquarters prior to Junior Show time.

Entries in Junior Show must be in name of individual. No farm names allowed. Animals not entered in open or 4-H must pay pen rent.

All livestock exhibitor's trucks, trailers and vehicles must be parked outside the gates.

Shorthorn–Angus–Hereford–Simmental Classes All Purebred. All Other percentage cattle need to be in All Other Breeds with papers. All animals are only to be entered into one breed. Members of immediately family ONLY may combine entries to show in group class—OPEN SHOW ONLY.

H1-BEEF CATTLE

\$5,888.00 Premiums Offered

Entry Fee \$4.00

Premium Number		1st	2nd	3rd	4th
1-SHORTHORN					
950.	JR. Heifer Calf-After Jan. 1	\$20	\$16	\$12	\$8
951.	SR. Heifer Calf-Oct. 1 - Dec. 31	\$20	\$16	\$12	\$8
952.	Summer Yearling Heifer-July 1-Sept. 30	\$20	\$16	\$12	\$8
953.	Spring Yearling Heifer-April 1-June 30	\$20	\$16	\$12	\$8
954.	JR. Yearling Heifer-Jan. 1-Mar. 31	\$20	\$16	\$12	\$8
955.	SR. Yearling Heifer-July 1-Dec. 31	\$20	\$16	\$12	\$8
956.	Cow in Production with Natural Calf	\$20	\$16	\$12	\$8
957.	Calf Champion Female.....	Rosette			
958.	JR. Champion Female.....	Rosette			
959.	SR. Champion Female.....	Rosette			
960.	Grand Champion Female.....	\$50 & Rosette			
961.	Reserve Grand Champion Female.....	\$25 & Rosette			
2-ANGUS					
962.	JR. Heifer Calf-After Jan. 1	\$20	\$16	\$12	\$8
963.	SR. Heifer Calf-Oct. 1 - Dec. 31	\$20	\$16	\$12	\$8
964.	Summer Yearling Heifer-July 1-Sept. 30	\$20	\$16	\$12	\$8
965.	Spring Yearling Heifer-April 1-June 30	\$20	\$16	\$12	\$8
966.	JR. Yearling Heifer-Jan. 1-Mar. 31	\$20	\$16	\$12	\$8
967.	SR. Yearling Heifer-July 1-Dec. 31	\$20	\$16	\$12	\$8
968.	Cow in Production with Natural Calf	\$20	\$16	\$12	\$8
969.	Calf Champion Female.....	Rosette			
970.	JR. Champion Female.....	Rosette			
971.	SR. Champion Female.....	Rosette			
972.	Grand Champion Female.....	\$50 Rosette			
973.	Reserve Grand Champion Female.....	\$25 Rosette			
3-ALL OTHER BREEDS					
(Purebred and 7/8 & above Cattle that are registered)					
974.	JR. Heifer Calf-After Jan. 1	\$20	\$16	\$12	\$8
975.	SR. Heifer Calf-Oct. 1 - Dec. 31	\$20	\$16	\$12	\$8
976.	Summer Yearling Heifer-July 1-Sept. 30	\$20	\$16	\$12	\$8
977.	Spring Yearling Heifer-April 1-June 30	\$20	\$16	\$12	\$8
978.	JR. Yearling Heifer-Jan. 1-Mar. 31	\$20	\$16	\$12	\$8
979.	SR. Yearling Heifer-July 1-Dec. 31	\$20	\$16	\$12	\$8
980.	Cow in Production with Natural Calf	\$20	\$16	\$12	\$8
981.	Calf Champion Female.....	Rosette			
982.	JR. Champion Female.....	Rosette			

Premium Number	1st	2nd	3rd	4th
983.SR. Champion Female.....	Rosette			
984. Grand Champion Female.....	\$50 & Rosette			
985. Reserve Grand Champion Female.....	\$25 & Rosette			
4—HEREFORD				
986. JR. Heifer Calf—After Jan. 1	\$20	\$16	\$12	\$8
987. SR. Heifer Calf—Oct. 1 - Dec. 31	\$20	\$16	\$12	\$8
988. Summer Yearling Heifer—July 1-Sept. 30	\$20	\$16	\$12	\$8
989. Spring Yearling Heifer—April 1-June 30	\$20	\$16	\$12	\$8
990. JR. Yearling Heifer—Jan. 1-Mar. 31	\$20	\$16	\$12	\$8
991. SR. Yearling Heifer—July 1-Dec. 31	\$20	\$16	\$12	\$8
992. Cow in Production with Natural Calf	\$20	\$16	\$12	\$8
993. Calf Champion Female.....	Rosette			
994. JR. Champion Female.....	Rosette			
995. SR. Champion Female.....	Rosette			
996. Grand Champion Female.....	\$50 & Rosette			
997. Reserve Grand Champion Female.....	\$25 & Rosette			
5—SIMMENTAL				
998. JR. Heifer Calf—After Jan. 1	\$20	\$16	\$12	\$8
999. SR. Heifer Calf—Oct. 1 - Dec. 31	\$20	\$16	\$12	\$8
1000. Summer Yearling Heifer—July 1-Sept. 30	\$20	\$16	\$12	\$8
1001. Spring Yearling Heifer—April 1-June 30	\$20	\$16	\$12	\$8
1002. JR. Yearling Heifer—Jan. 1-Mar. 31	\$20	\$16	\$12	\$8
1003. SR. Yearling Heifer—July 1-Dec. 31	\$20	\$16	\$12	\$8
1004. Cow in Production with Natural Calf	\$20	\$16	\$12	\$8
1005. Calf Champion Female.....	Rosette			
1006. JR. Champion Female.....	Rosette			
1007. SR. Champion Female.....	Rosette			
1008. Grand Champion Female.....	\$50 & Rosette			
1009. Reserve Grand Champion Female.....	\$25 & Rosette			
6—COMMERCIAL CLASS (Unregistered Animals Only)				
1010. Heifer, junior calf born after Jan. 1, 2025	\$20	\$16	\$12	\$8
1011. Heifer, one year and under 2	\$20	\$16	\$12	\$8
1012. Cow in Production with Natural Calf	\$20	\$16	\$12	\$8
1013. Calf Champion Female.....	Rosette			
1014. JR. Champion Female.....	Rosette			
1015. SR. Champion Female.....	Rosette			
1016. Grand Champion Female.....	\$50 & Rosette			
1017. Reserve Grand Champion Female.....	\$25 & Rosette			
7—CHAMPIONS OVER ALL BREEDS				
1018. Grand Champion Female OAB.....	\$250 & Trophy			
1019. Reserve Grand Champion Female OAB.....	\$125 & Rosette			

H1-JUNIOR STEER SHOW

Entry Fee \$5.00 To be Judged Saturday, August 9th

PUREBRED STEERS MUST BE REGISTERED IN THE EXHIBITOR'S NAME

For an Early Release and/or Sunday morning release, see RULE #58, page 6

Administration Fee \$5.00 Per Dept., includes 4-H exhibitors, no fee for junior dept. if entered in open show.

ALL CATTLE EXHIBITED AT ILLINOIS COUNTY FAIRS WILL BE REQUIRED TO HAVE AN ELECTRONIC 840 TAG.

1st and 2nd Place Animals will show for Grand Champion. If more than 15 animals in one class, the class will be split. All breeds must have at least five entries or they will be combined with another breed. Animals not entered in open or 4-H must pay pen rent.

Class weight to be determined at weigh-in.

Premium Number	1st	2nd	3rd	4th	5th	6th	7th
----------------	-----	-----	-----	-----	-----	-----	-----

8-JR STEER SHOW-ANGUS

1025. Lightweight Angus	\$30	\$24	\$20	\$16	\$12	\$10	\$8
1026. Mediumweight Angus	\$30	\$24	\$20	\$16	\$12	\$10	\$8
1027. Heavyweight Angus	\$30	\$24	\$20	\$16	\$12	\$10	\$8

1028. Grand Champion Angus.....\$50 & Rosette

1029. Reserve Grand Champion Hereford.....\$25 & Rosette

9-JR STEER SHOW-HEREFORD

1030. Lightweight Hereford	\$30	\$24	\$20	\$16	\$12	\$10	\$8
1031. Mediumweight Hereford	\$30	\$24	\$20	\$16	\$12	\$10	\$8
1032. Heavyweight Hereford	\$30	\$24	\$20	\$16	\$12	\$10	\$8

1033. Grand Champion Hereford.....\$50 & Rosette

1034. Reserve Grand Champion Hereford.....\$25 & Rosette

10-JR STEER SHOW-SHORTHORN

1035. Lightweight Shorthorn	\$30	\$24	\$20	\$16	\$12	\$10	\$8
1036. Mediumweight Shorthorn	\$30	\$24	\$20	\$16	\$12	\$10	\$8
1037. Heavyweight Shorthorn	\$30	\$24	\$20	\$16	\$12	\$10	\$8

1038. Grand Champion Shorthorn.....\$50 & Rosette

1039. Reserve Grand Champion Shorthorn.....\$25 & Rosette

11-JR STEER SHOW-CROSSBREDS

1040. Crossbreeds Lightweight.....	\$30	\$24	\$20	\$16	\$12	\$10	\$8
------------------------------------	------	------	------	------	------	------	-----

1041. Crossbreeds Medium Lightweight..	\$30	\$24	\$20	\$16	\$12	\$10	\$8
1042. Crossbreeds Heavy Lightweight ..	\$30	\$24	\$20	\$16	\$12	\$10	\$8
1043. Crossbreeds Light Mediumweight..	\$30	\$24	\$20	\$16	\$12	\$10	\$8
1044. Crossbreeds Mediumweight.....	\$30	\$24	\$20	\$16	\$12	\$10	\$8
1045. Crossbreeds Heavy Mediumweight..	\$30	\$24	\$20	\$16	\$12	\$10	\$8
1046. Crossbreeds Light Heavyweight ..	\$30	\$24	\$20	\$16	\$12	\$10	\$8
1047. Crossbreeds Heavyweight.....	\$30	\$24	\$20	\$16	\$12	\$10	\$8

1048. Grand Champion Crossbreeds.....\$50 & Rosette

1049. Reserve Grand Champion Crossbreeds.....\$25 & Rosette

12-JR STEER SHOW-GRAND CHAMPION OAB

1050. Grand Champion Steer OAB.....\$250.....Trophy

1051. Reserve Grand Champion Steer OAB.....\$125.....Rosette

Department H1

13-YOUTH BEEF JUDGING CONTEST

Open to first 20 entries, boy or girl between ages 8 & 21 years of age as of Sept. 1, 2024. Contestants will determine placings in two lineups of animals as selected by the Superintendent. Contest to be held Wednesday, August 6th in conjunction with the beef carcass show. No entry fee.

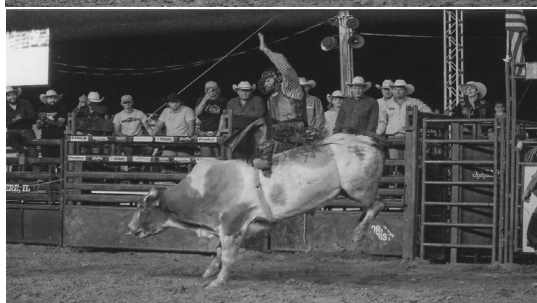
In case of ties, premium amounts will be adjusted

PREMIUM NO. 1052 PREMIUMS OFFERED

1st - \$40 2nd - \$36 3rd - \$32 4th - \$28 5th - \$24

6th - \$20 7th - \$16 8th - \$12 9th - \$8 10th - \$4

Next Level Pro Bull Riding & Barrel Racing



~~~

**Friday**

**August 8th,**

**at 7:00 p.m.**

**in front of the**

**Grandstand**

~~~

(Sponsored by Bel Rock Asphalt, Gallano Trucking, Twin Towers, Boone County District #2, Cosmopolitan Club of Belvidere, Stillman Bank, C.E.S. Inc.)